



NOAA FISHERIES

Sustainable Fisheries

UPCOMING EVENTS

October 4-7

SARC 62 Witch Flounder Working
Group Meeting, Woods Hole MA

November 2-3

North Atlantic Right Whale Consortium
annual meeting, New Bedford MA

November 29-December 2

SAW/SARC 62, Black sea bass and
witch flounder, Woods Hole MA

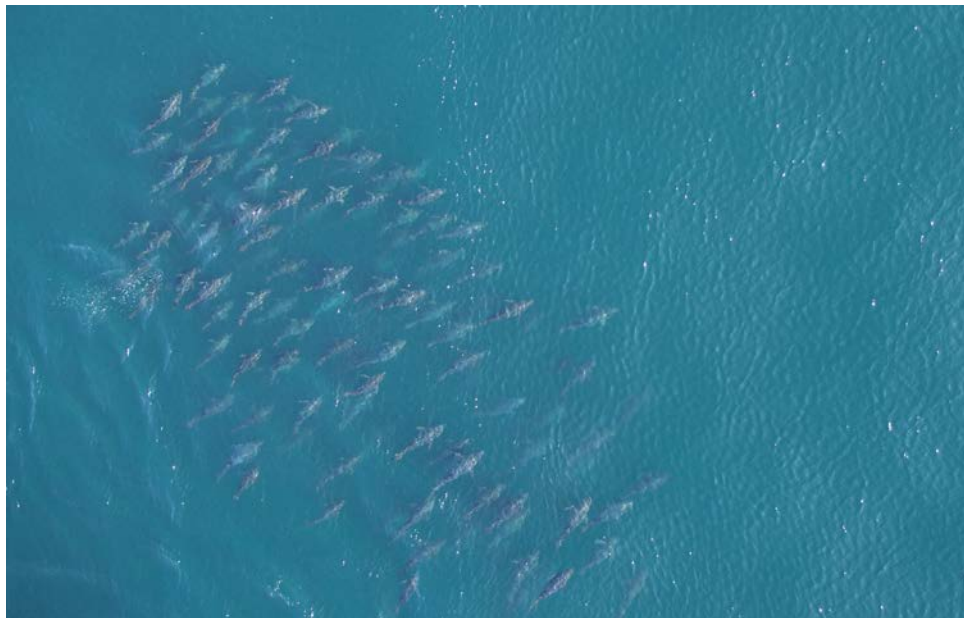
December 6-7

30th Annual NEFSC Flatfish
Conference, Westbrook CT

February 21-23, 2017

SARC 63, ocean quahog, Woods Hole
MA

Top Story Tracking Technologies Aid Research



School of Atlantic bluefin tuna image taken using a hexacopter drone northeast of Provincetown MA. Photo Credit: NOAA Fisheries/Michael Jech and Jennifer Johnson; Large Pelagics Research Center/Molly Lutcavage and Angelia Vanderlaan

Unmanned aerial systems (UAS), commonly called drones, along with satellite tags and remotely operated vehicles are providing NOAA Fisheries scientists with new tools to study whales, seals, sea turtles and other marine life from a different perspective.

Drones Provide New Look at Marine Mammals

Studying whales and seals will not be the same for NEFSC marine mammal researchers Lisa Conger and Elizabeth Josephson, who spent weeks training to fly an unmanned aerial system (UAS), commonly called a drone. Both researchers are now certified NOAA UAS pilots. This spring they had a chance to put that training to good use. Operating from a NOAA small boat in Cape Cod Bay, they flew one of the NEFSC's research drones, an APH-22 hexacopter, for right whale photo identification and photogrammetry studies. Photogrammetry techniques allow researchers to get body measurements from aerial photographs. Four NEFSC researchers have become certified NOAA UAS pilots, and in recent months have been putting their training to use for right whale studies as well as research at gray seal pupping colonies, and for menhaden and tuna schooling studies. More here:

http://www.nefsc.noaa.gov/press_release/pr2016/scispot/ss1611/



A loggerhead turtle awaiting its satellite tag. The turtle was placed on tires for cushioning. Photo Credit: NOAA Fisheries/ Heather Haas, ESA Permit 16556

Tagged Loggerhead Sea Turtles Follow Pattern (Except for George)

Researchers, including staff from NOAA's Northeast Fisheries Science Center, tagged 15 juvenile and adult loggerhead sea turtles May 16-21 in Mid-Atlantic waters including one in the Gulf Stream. Eight turtles were also filmed by a remotely operated vehicle, or ROV. The work is part of an ongoing effort started in 2009 to learn more about loggerhead turtle movements and behavior. The team went out two weeks earlier than usual to tag turtles early in their migration to different foraging areas. After capturing 14 turtles on the Mid-Atlantic shelf, the researchers headed further offshore into the edge of the Gulf Stream. They captured and tagged one loggerhead there and named him/her George, for Georges Bank. Unlike the other tagged turtles that stayed on the shelf, George traveled far and wide. The researchers also deployed an ocean surface drifter made by Falmouth (MA) High School students. The drifter data, collected by NEFSC oceanographer James Manning, will add to information that helps ground truth ocean surface circulation models. More here: http://www.nefsc.noaa.gov/press_release/pr2016/scispot/ss1612

Science Shorts

Group Effort Leads to Successful Turtle Disentanglements

Staff from the NEFSC's Protected Species branch at the Woods Hole Laboratory helped disentangle two leatherback turtles on Sunday, June 19, just hours apart. One turtle was spotted near Quick's Hole, the other off Naushon Island, both in the Elizabeth Island chain off Woods Hole. The designated stranding network lead group, the Center for Coastal Studies (CCS) in Provincetown, was 70 miles away and asked NEFSC staff for help. Staff worked with the Coast Guard and with the Massachusetts Environmental Police and freed both turtles:

<http://www.nefsc.noaa.gov/news/features/turtle-disentanglements>

2015 Commercial Fishing Business Costs Survey Underway

NEFSC has been periodically surveying commercial fishing businesses to collect data on costs since 2007, and last did so in 2012. The 2015 survey is designed to collect vital information on the total costs of commercial fishing in the Northeast. Invitations to participate, including instructions on how to take the cost survey online and a paper copy of the cost survey, were mailed to more than 2,000 commercial fishing businesses in August. Data are vital to getting an accurate picture of how fishery management measures are affecting the business bottom line and community stability. Survey responses are confidential data, just like vessel trip, observer, and dealer reports, and protected by law from disclosure. More at:

http://www.nefsc.noaa.gov/news/features/2016_cost_survey/commercial

NOAA Fisheries Considered Moving Trawl Surveys to Fishing Vessels

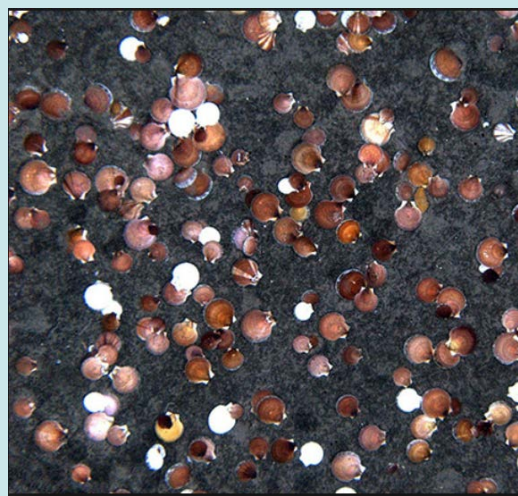
NOAA Fisheries is initiating a planning process to support its intention to transition part or all of the NEFSC's spring and fall bottom trawl surveys from the NOAA Ship *Henry B. Bigelow* to fishing industry vessels provided that survey data collection quality and time series integrity can be maintained. The target timeframe for the transition is five years. A science center working group is being established to develop options and criteria for making the shift; it will work closely with industry through the Northeast Trawl Survey Advisory Panel and seek broader industry input via the Council process: http://www.nefsc.noaa.gov/press_release/pr2016/news/nr1609/



Dr. Susan Gardner is our new Deputy Director. Susan previously served as the NEFSC Chief of Staff. Photo Credit: NOAA Fisheries/Shelley Dawicki



Haddock on conveyor for sorting and sampling aboard the NOAA Ship *Henry Bigelow*



Sea scallops on bottom, photographed from the HabCam

NEFSC seeks commercial fishing vessels for bottom trawl survey project

Competition closed in early September. Selected vessels will work with the NEFSC Northeast Cooperative Research Program and the Northeast Trawl Survey Advisory Panel. The project is intended to assess vessel capability in the region for conducting standardized bottom trawl tows to supplement the existing NEFSC Ecosystem Bottom Trawl Survey conducted aboard the NOAA Ship *Henry Bigelow*.

Release of US risk assessment on exporting live American lobster to the European Union

Last fall, Sweden presented a risk assessment to the European Union and asked it to consider banning imported live American lobster, suggesting that such imports posed an unacceptable risk of introducing an invasive species and disease. The NEFSC along with state and academic colleagues worked on the US assessment, used to argue the case against the ban before the EU's Scientific Forum on Invasive Alien Species this summer. As of this writing, the forum has not issued an opinion on the matter. U.S. and Canadian partners, including NOAA Fisheries, remain actively engaged on this issue. There has been no new scientific evidence added from Sweden at this time. We will provide supplemental information to the EU in anticipation of the next step in this process, when the EU Scientific Committee on Invasive Aquatic Species meets on October 5-7, 2016.

2017-2018 Sea Scallop Research Set-Aside call for proposals issued

Priorities include population surveys as well as research to reduce bycatch, improve and understand factors affecting scallop meat quality, identifying non-harvest sources of sea scallop mortality, documenting loggerhead turtle behavior in the Mid-Atlantic waters, characterize habitat, to better understand sea scallop ecology and biology, and examining the relationship of fishing power to landings per unit effort. Proposals are due October 7. For more information, visit us at: http://www.nefsc.noaa.gov/coopresearch/funding_opps.html#scallop

Field work with Passamaquoddy Tribe

Protected Species Branch staff assisted Passamaquoddy biologists with several projects on tribal lands this summer, including identifying cold water refugia on the South Branch of the Penobscot River, remote pond surveys, and evaluation of martin nest boxes.

Workshop on adding movement to ecosystem and stock assessment models, New Bedford MA

The NEFSC Animal Movement Working Group hosted this NOAA North Atlantic Regional Team-funded workshop. The major outcomes were some best practices for incorporating movement into models and a general framework for doing so.

Biological sampling of two data poor species to proceed

Saltonstall-Kennedy Grant Program funding has been received for Atlantic halibut and Atlantic wolffish cooperative sampling projects. The Nature Conservancy is leading

the halibut project. Otoliths will be aged by the State of Massachusetts; gonad histology will be read by NEFSC, and there is also a tagging component (PSAT tags). Other collaborators include scientists from SMAST, Canada, the New England Aquarium, and the University of Alaska. A number of Cape Cod gillnet and longline vessels are cooperating partners. The wolffish project is led by the University of New Hampshire. Otolith and gonad analysis will be performed by the same partners as in the halibut project. A genetic stock structure/connectivity component will be handled by Dalhousie University. The cooperating industry partner is F/V *Lisa Ann Fisheries*.

NEFSC continuous plankton recorder samples transferred to Sir Alister Hardy Foundation for Ocean Science

The NEFSC Continuous Plankton Recorder Survey began in 1971 and conducted approximately monthly sampling across transects in the Gulf of Maine and Mid-Atlantic Bight until the program was ended in 2013. The transfer of the NEFSC CPR samples to SAHFOS will ensure that they are curated and remain accessible for research use. Sir Alister Hardy invented the CPR method and the foundation maintains a network of CPR transects in North Atlantic and North Pacific.

2 Million Milford bay scallop larvae planted off Cape Cod

NEFSC and cooperating inshore shellfish industry members on Cape Cod and the Islands confirm a successful set. The bay scallops were cultured at the NEFSC Milford Lab and carry genetic markers to allow survival and development of the planted stock to be tracked independent of natural settlement.

Amphipod tubes sampled, Sandy Hook Bay

An ongoing monitoring program at the James J. Howard Lab is sampling stations in Sandy Hook Bay for amphipod tubes. The hypothesis is that the complex bottom created by amphipod tubes shelter newly-settled hard clams from predation by shrimp, crabs, and fish, allowing clam beds to recruit market-sized clams. Clam recruitment has been poor in recent years when the amphipod tubes were absent, but this year the tubes appear present in larger numbers.

NEFSC Ecosystem and Climate Science Program Review, Woods Hole MA This peer review examined NEFSC science programs that investigate ecological, oceanographic, climate, and habitat-related processes as they are linked to living marine resources. For details, presentations, background documents, and other information, visit the review website here:

http://nefsc.noaa.gov/program_review/pr2016.html

NOAA Fisheries Office of Aquaculture Science Program Review

The East Coast program review occurred at our Milford Laboratory July 19-22. Details are here: http://nefsc.noaa.gov/program_review/

NEFSC Northeast Cooperative Research Program Review

Prof. Steve Kennelly (IC Independent Consulting) is conducting this review of the program. His report is expected in September.



Genetically marked bay scallops cultured at NEFSC Milford Lab and planted off Cape Cod

Assessment Updates

Monkfish Operational Assessment review

The review group met all the terms of reference. The final report was posted in late July and is available here: <http://www.nefsc.noaa.gov/publications/crd/crd1609>

Transboundary Resource Assessment Committee meeting, Woods Hole MA

The committee reviewed status updates for cod and haddock in the eastern Georges Bank region, and for yellowtail flounder on Georges Bank. These assessments are conducted jointly with Canadian colleagues from the DFO lab in St. Andrews, NB. They are used to support management decisions for fishery stocks shared by the two countries in the Gulf of Maine-Georges Bank region. The final TRAC Status Reports for this year can be accessed here: <http://www.nefsc.noaa.gov/saw/trac/>

SARC 61 peer review of the surfclam stock assessment, Woods Hole MA

The SARC panel comprised three reviewers from the Center for Independent Experts and one MAFMC Science and Statistical Committee member who served as chair. The assessment presented concluded that the surfclam stock is not overfished and overfishing is not occurring. New biological reference points were recommended based on ratios rather than absolute estimates of biomass and fishing mortality.

SARC 62 witch flounder and black sea bass

The working groups are proceeding with meetings to consider data, modeling, and biological reference points, the peer review will occur Nov. 29-Dec. 2 in Woods Hole MA. Details are here: <http://www.nefsc.noaa.gov/saw/>



Surfclams in a joint study by NEFSC and the Woods Hole Oceanographic Institution on ocean acidification effects.

Vessels and Field Update

F/V *Darana* and F/V *Jersey Cape*, new TED tested

This experiment tested a new cable Turtle Excluder Device design and how its use affected target catch, predominantly summer flounder. It was conducted by NEFSC, the Southeast Fisheries Science Center, Coonamessett Farm Foundation, and fishing industry members. A report on the results is expected this fall.

F/V *Karen Elizabeth*, gear efficiency study

NEFSC staff and contractors were aboard with Capt. Chris Roebuck and completed this sweep efficiency study in witch flounder and thorny skate habitat. The study used both a *Bigelow*-style rock hopper sweep and an industry-designed chain sweep. NEFSC staff and other co-authors will use the data collected to prepare a working paper for the upcoming witch flounder benchmark assessment (SARC 62).

F/V *Kathy Ann*, turtle tagging

The year's second cooperative sea turtle tagging cruise got underway in August. This cruise is focused on waters northeast of Long Island, perhaps including Georges Bank and shelf-break waters. The project is a partnership with Coonamessett Farm Foundation supported by the Sea Scallop Research Set-Aside program and AMAPPS.

F/V *E.S.S. Pursuit*, surfclam/ocean quahog survey

The 2016 survey is complete, including all pre-selected stations and additional sampling in strata of interest.



Gear efficiency study, F/V *Karen Elizabeth*. Photo credit: Calvin Alexander

PUBLICATIONS

Cimino, MA, HJ Lynch, VS Saba, and MJ Oliver.

Projected asymmetric response of Adélie penguins to Antarctic climate change.

Scientific Reports 6: 28785,

DOI:10.1038/srep28785.

Hatch LT, CM Wahle, J Gedamke, J Harrison, B

Laws, SE Moore, JH Stadler, SM Van Parijs.

2016. Can you hear me here? Managing acoustic habitat in US waters. *Endangered Species Research* 30: 171–186.

Jon D, DePiper G, Hoagland P. 2016. Applying

Portfolio Management to Implement

Ecosystem-Based Fishery Management

(EBFM). *North American Journal of Fisheries Management* 36(3):652-669.

KL Smalling, AD Deshpande, VS Blazer, BW

Dockum, D Timmons, BL Sharack, RJ Baker, J

Samson, TJ Reilly. 2016. Young of the year

bluefish (*Pomatomus saltatrix*) as a bioindicator of estuarine health: Establishing a new baseline for persistent organic pollutants after Hurricane Sandy for selected estuaries in New Jersey and New York.

Marine Pollution Bulletin 107(2):422-431.

doi:10.1016/j.marpolbul.2016.03.019

Nickitas G, L Yin, Y Jiang, Y Wang, P Howell, V

Saba, J Schute, PH Orton, B Wen. An open-

access, multi-decadal, three-dimensional,

hydrodynamic hindcast dataset for the Long

Island Sound and New York / New Jersey

Harbor Estuaries. *Journal of Marine Science and Engineering* 4(48). doi:

10.3390/jmse4030048.

Nielsen J, RB Hedeholm, J Heinemeier, PG

Bushnell, JS. Christiansen, J Olsen, C Bronk

Ramsey, R Brill, M Simon, KF Steffensen, JF

Steffensen. Eye lens radiocarbon reveals

centuries of longevity in the Greenland shark

(*Somniosus microcephalus*). *Science* 353:702-704.

Patel SH, SJ Morreale, VS Saba, A

Panagopoulou, D Margaritoulis, JR Spotila.

2016. Climate impacts on sea turtle breeding phenology in Greece and associated foraging habits in the wide Mediterranean region.

PLoS ONE 11(6): e0157170.

doi:10.1371/journal.pone.0157170

Richards, A., J O'Reilly, and K Hyde. 2016. Use

of satellite data to identify critical periods for

early life survival of northern shrimp in the

Gulf of Maine. *Fisheries Oceanography*

25:306-319. DOI: 10.1111/fog.12153

R/V Sharp, Integrated Benthic/Atlantic Sea Scallop Survey

The survey was completed on June 24. Excellent progress was made on legs 2 and 3 and all planned work was completed on these legs.

R/V Neil Armstrong

NEFSC hydroacoustic survey specialists were aboard a short cruise, helping shake down acoustic and other capabilities of this new UNOLS vessel operated by Woods Hole Oceanographic Institution. Staff developed a method for mid-water trawling using a single tow wire system. Other efforts included using the new SIMRAD EK80 scientific sounder for fisheries acoustics.

FSV Henry Bigelow, AMAPPS and fall Bottom Trawl Survey

From late June to late August NEFSC and partnering scientists from the USF&W Service were aboard, conducting the 2016 Atlantic Marine Assessment Program for Protected Species (AMAPPS) abundance line-transect survey. This survey covers waters from Virginia to Massachusetts, from the shoreline to the Gulf Stream and beyond the US EEZ, and into Canadian waters east of Georges Bank. Eight observers were aboard to sight marine mammals, two more observers were sighting seabirds, two scientists were aboard to “listen” for animals using a towed hydrophone and sonobouys, and two scientists were dedicated to collecting physical and biological data using the EK60, bongo nets, neuston tows, a visual plankton recorder and another instrument that continuously photographed phytoplankton collected from the flow-through water system. Next up, the fall Ecosystem Bottom Trawl Survey, scheduled for September 6 through November 13.

R/V Gloria Michelle, shrimp, sea pens, and an open house

In June, NEFSC staff and University of Maine students performed 19 beam trawls at 150 to 180 m depth over muddy bottom in the Gulf of Maine to capture sea pens and any associated redfish larvae. The study is an attempt to better understand the importance of sea pens as essential fish habitat for larval redfish. The presence of small sea pens suggests a recent recruitment to the sea floor for this soft coral species, which also warrants further investigation. In July, the vessel conducted the Gulf of Maine Shrimp Survey. In August, the boat visited Nantucket for a public outreach event.

NOAA Ship Pisces, Ecosystem Monitoring cruise

The 2016 summer EcoMon cruise achieved almost complete sampling coverage of the Mid-Atlantic Bight, Southern New England, and Georges Bank.

Atlantic Marine Assessment Program for Protected Species aerial abundance survey

This is ongoing through the end of September. The NOAA Twin Otter is based out of Hyannis, MA, although other airports from NY to ME will probably also be used. Six scientists (divided in two teams) and two pilots fly track lines ranging from NJ to ME from the shore line to the EEZ in the Gulf of Maine and from the shore to the 200m depth contour in waters south of the Gulf of Maine.

Atlantic salmon sampling, Qaqortoq Greenland

NEFSC Protected Species Branch staff collected biological samples from this internal use-only commercial Atlantic salmon fishery. Our sampler was one of only six from around the North Atlantic participating in the annual monitoring program, which is agreed to by the Parties to the West Greenland Commission of NASCO.

PUBLICATIONS

Richards, A. and L Jacobson. 2016. A simple predation pressure index for modeling changes in natural mortality: Application to Gulf of Maine northern shrimp stock assessment. *Fisheries Research* 179: 224–236.

Richardson DE, KE Marancik, JR Guyon, ME Lutcavage, B Galuardi, CH Lam, HJ Walsh, S Wildes, DA Yates, JA Hare. Reply to Safina and Walter et al. Multiple lines of evidence for size-structured spawning migrations in western Atlantic bluefin tuna. Letter, *Proceedings of the National Academy of Sciences*.

Stevens, BG and V Guida. 2016. Depth and temperature distribution, morphometrics, and sex ratios of red deepsea crab (*Chaceon quinquedens*) at 4 sampling sites in the Mid-Atlantic Bight. *Fishery Bulletin* 114:343:359.

Cooperative Atlantic States Shark Pupping and Nursery sampling completed, Delaware Bay

Juvenile and mature sand tiger and sandbar sharks were tagged and released. Delaware Bay is a habitat area of particular concern for juvenile sandbar sharks.

Long Island Sound fish trapping and water sampling

NEFSC Milford Lab staff are studying the role of aquaculture sites as fish habitat. They are collecting samples at two aquaculture sites and a rocky reef in Long Island Sound. Weekly water sampling at the sites for use in eDNA analysis is also part of the project.

Monitoring Updates

2016-2016 Standardized reporting methodology (SBRM) sea-day schedule posted and short-term funding for groundfish at-sea monitoring announced

Fewer SBRM days are required this year. This, combined with carry-over in the SBRM monitoring contract resulted in full-funding for SBRM and a surplus that could be used to cover some at-sea monitoring costs for groundfish sector vessels this fishing year. This is the first year that sectors have been paying the cost for a monitor. Trips that were selected for monitoring beginning July 1, are now eligible for reimbursement of 85% of costs incurred for at-sea monitoring. This includes ASM sea-day costs as well as trip using electronic monitoring as a replacement for at-sea monitoring until the surplus funds are expended.

Herring and mackerel electronic monitoring (EM) contract awarded

An award was made to Saltwater Inc. to install EM systems on willing mid-water herring and mackerel vessel for a project to evaluate this technology as a monitoring tool, primarily for slippage events. “Slippage” refers to catch discarded before an onboard fishery observer can sample it. The science center and regional office are working together to solicit vessel participation and oversee the technical aspects of the contract. The complete EM system includes cameras, sensors, GPS, and a control box.

Supplemental Northeast Fishery Observer contract awarded

The observer provider AIS has been retained to assist with completing Northeast observer sea days. There will be additional training sessions in September increase the number of certified observers. This contract is expected to increase the number of sea days accomplished by Northeast fishery observers.



Preliminary Agenda

The agenda is subject to change. Bulleted items represent the anticipated major issues to be discussed or acted upon at the meeting. The final agenda will include additional items and may revise the bulleted items provided below. The agenda reflects the current estimate of time required for scheduled Board meetings. The Commission may adjust this agenda in accordance with the actual duration of Board meetings. Interested parties should anticipate Boards starting earlier or later than indicated herein.

Sunday, October 23, 2016

6:30 – 8:30 p.m. Welcome Reception

Monday October 24, 2016

8:30 a.m. – Noon **75th Annual Meeting Plenary Session – Honoring our Past, Celebrating the Present and Envisioning the Future**

1:00 – 5:00 p.m. **Law Enforcement Committee**
(A portion of this meeting is a closed session for Committee members only)

- Discussion of Emerging ISFMP Issues
- Review and Discussion of 2017 Action Plan Items
- Review of Tautog Tagging Studies and Enforcement Recommendations
- Review and Discussion of Jonah Crab Proposed Claw Harvest Regulations
- Review and Discussion of Ongoing Enforcement Activities (Closed Session)

1:00 – 1:30 p.m. **Spiny Dogfish Management Board**

- Review and Set Spiny Dogfish Fishery Specifications for 2017/2018
- Consider 2016 Fishery Management Plan Review and State Compliance

1:45 – 2:45 p.m.

Coastal Sharks Management Board

- Review and Set 2017 Coastal Sharks Fishery Specifications
- Review Proposed Rule for Blacknose Possession Limits for Federally-permitted Vessels
- Review Proposed Rule for Highly Migratory Species Amendment 5b (Dusky Sharks) and 2016 Stock Assessment Results

3:00 – 5:00 p.m.

Atlantic Striped Bass Management Board

- Review 2016 Stock Assessment Update for Atlantic Striped Bass
- Review Technical Committee Report on the Performance of Addendum IV in 2015
- Consider Approval of the Advisory Panel Request to Submit Comment to the Mid-Atlantic Fishery Management Council on its Draft Squid Capacity Amendment

Tuesday October 25, 2016

8:00 – 10:00 a.m.

Executive Committee

(A portion of this meeting may be a closed session for Committee members and Commissioners only)

- Consider Approval of FY16 Audit
- Review the Conservation Equivalency Guidance Document
- Review the ASMFC Standard Meeting Practices Document

8:00 a.m. – Noon

Law Enforcement Committee

(A portion of this meeting may be a closed session for Committee members only)

- Federal/State Agency Reports
- Review of Other ISFMP Issues as Requested
- Lobster Enforcement Subcommittee Report and Discussion
- Interstate Violator Compacts and Application to Marine Fisheries
- Review and Discussion of Law Enforcement Committee Comments and Recommendations to Management Boards
- Review of Warrant and Search Provisions among LEC Jurisdictions
- Review of Out-of-State Shipment and Sale Tracking and Record-Keeping for Enforcement Needs

10:15 a.m. – 12:15 p.m.

South Atlantic State/Federal Fisheries Management Board

- Review Red Drum Working Group Report
- Review and Consider Approval of Cobia Public Information Document
- Update on Stock Assessment Progress for Spot and Atlantic Croaker
- Consider Black Drum and Spot Fishery Management Plan Reviews and State Compliance

1:15 – 3:15 p.m.

Tautog Management Board

- Review 2016 Stock Assessment Update Report
- Consider Plan Development Team Tasks for Draft Amendment 1
- Review the Tagging Tank Trial Report
- Consider Law Enforcement Subcommittee Recommendations Regarding the Feasibility of a Commercial Harvest Tagging Program
- Consider 2016 Fishery Management Plan Review and State Compliance

3:30 – 4:30 p.m.

Summer Flounder, Scup, and Black Sea Bass Management Board

- Review Marine Recreational Information Program Estimates for Wave 4 (if available)
- Consider Continuation of Addendum XXVII for Black Sea Bass
- Discuss Management of the 2017 Summer Flounder Recreational Fishery
- Update on Stock Assessment Progress for Black Sea Bass

4:45 – 5:30 p.m.

Shad and River Herring Management Board

- Review Massachusetts Sustainable Fishery Plan for River Herring
- Review Mid-Atlantic Fishery Management Council Decision on Potential Management of Shad and River Herring
- Consider 2016 Fishery Management Plan Review and State Compliance

6:30 – 9:00 p.m.

Annual Dinner

Wednesday October 26, 2016

8:00 – 10:00 a.m.

Horseshoe Crab Management Board

- Consider Approval of Draft Addendum VIII for Public Comment
- Consider Approval of 2017 Harvest Specifications for the Delaware Bay Region
- Consider Technical Committee Draft Proposal for Conducting Additional Bait Trials
- Update Board on Stock Assessment Planning for 2018 Assessment (if needed)

10:15 – 11:15 a.m.

Atlantic Coastal Cooperative Statistics Program (ACCSP) Coordinating Council

- Program Update
- Consider Approval of Addendum to Memorandum of Understanding to Reflect Governance Change

11:30 a.m. – 12:30 p.m. Business Session

- Consider Approval of 2017 Action Plan
- Election of Officers

12:30 – 1:45 p.m. Captain David H. Hart Award Luncheon

2:00 – 5:00 p.m. Atlantic Menhaden Management Board

- Review and Set 2017 Fishery Specifications
- Consider Approval of the Draft Public Information Document to Amendment 3 for Public Comment
- Review Technical Committee Report on “The Fate of an Atlantic Menhaden Year Class”
- Biological Ecological Reference Points Working Group Progress Report
- Consider Advisory Panel Nominations

Thursday October 27, 2016

8:00 – 10:30 a.m. Interstate Fisheries Management Program (ISFMP) Policy Board

- Finalize Revisions to the Conservation Equivalency Guidance Document
- Finalize ASMFC Standard Meeting Practices Document
- Law Enforcement and Habitat Committee Reports
- Update on the Risk and Uncertainty Working Group Progress
- Update on the Climate Change Working Group
- Progress Update on Benchmark Stock Assessments for American Eel and Atlantic Sturgeon
- Atlantic Coastal Fish Habitat Partnership Report

10:45 a.m. – 12:15 p.m. Atlantic Herring Section

- Review and Set 2017 Specifications
- Review and Discuss White Paper on 2016 Fishery Performance and Alternative Management Tools to Consider
- Consider 2016 Fishery Management Plan Review and State Compliance

12:30 – 4:00 p.m. American Lobster Management Board (*Lunch to be provided*)

- Consider Approval of American Lobster Draft Addendum XXV for Public Comment
- Consider Approval of Jonah Crab Draft Addendum II for Public Comment
- Review Reporting Working Group White Paper on Reporting in the Lobster Fishery
- Consider 2016 Fishery Management Plan Review and State Compliance for American Lobster
- Update on New England Fishery Management Council Deep-Sea Coral Amendment and Marine Monument