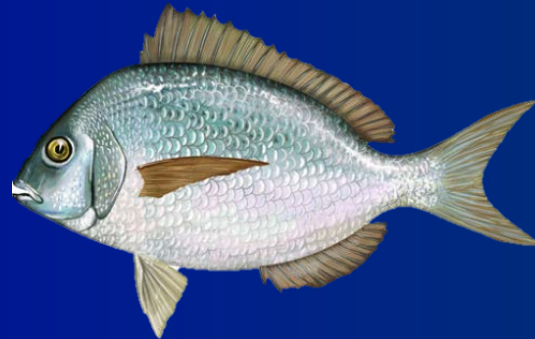




2017 Scup Recreational Measures



Council and Board Meeting

December 14, 2016

Baltimore, MD

Meeting Objective

- Recommend federal scup management measures that will constrain 2017 recreational landings to 5.50 million lb RHL.
- Continue regional approach in state waters? (Board)
 - If not, coast-wide measures

Reduction Needed

- 2016 landings projected to exceed 2016 RHL
- 2017 RHL is lower than 2016 RHL
- *Status quo* measures would likely cause 2017 RHL to be exceeded
- 2017 measures should be more restrictive than 2015-2016 to prevent an overage

Process

Aug 10

Council/Board Meeting (RHL)



Nov 9-10

Monitoring Committee



Nov 17

Advisory Panel Meeting



Dec 14

Council/Board Meeting



Jan 31 – Feb 2

Board Meeting

2015 Performance

2015 RHL	6.80 mil lb
2015 Landings	4.62 mil lb
% Over/Under	-32%

- Similar to 2014 performance
- No accountability measures (AMs) triggered, based on avg. 2013-2015 catch vs. 2013-2015 annual catch limits (ACLs)

2015-2016 Federal Regulations

- 9-inch TL minimum size
- 50 fish possession limit
- Jan 1-Dec 31



State Regulations

- Regional approach since 2003
 - Target of 97% of RHL for MA-NY
- No change in state regulations between 2015 & 2016



2015-2016 State Regulations (1 of 2)

State	Min. Size	Bag	Season
MA (private & shore)	10"	30 fish	May 1- Dec 31
MA (party/charter)	10"	45 fish	May 1 – Jun 30
		30 fish	July 1 – Dec 31
RI (private & shore)	10"	30 fish	May 1- Dec 31
RI Shore Program (7 sites)	9"	30 fish	May 1- Dec 31
RI (party/charter)	10"	30 fish	May 1-Aug 31; Nov 1-Dec 31
		45 fish	Sept 1-Oct 31
CT (private angler)	10"	30 fish	May 1- Dec 31
CT (45 shore sites)	9"		
CT (party/charter)	10"	30 fish	May 1-Aug 31 Nov 1-Dec 31
		45 fish	Sept 1-Oct 31

2015-2016 State Regulations (2 of 2)

State	Min. Size	Bag	Season
NY (private and shore)	10"	30 fish	May 1- Dec 31
NY (party/charter)	10"	30 fish	May 1- Aug 31 Nov 1-Dec 31
		45 fish	Sept 1- Oct 31
NJ	9"	50 fish	Jan 1-Feb 28 July 1 – Dec 31
DE, MD, VA, and NC (North of Cape Hatteras)	8"	50 fish	Jan 1 – Dec 31

2016 Landings Projections

2016 RHL	6.09 mil lb
2016 landings, waves 1-4	4.01 mil lb
2016 Projected Landings	Initial: 7.70 mil lb
	MC modified: 6.44 mil lb
2016 overage/ underage	Initial: 26%
	MC modified: 6%

Projection Methodology

(initial staff projections – Nov 2 memo)

■ MA, RI, CT, NY, NJ, NC

- 2016 wave 1-4 landings
- 2015 proportion of landings by wave
- Standard projection methodology

■ VA

- 2016 wave 1-4 landings
- 2013-2015 proportion of landings by wave

■ DE, MD

- Average landings, 2013-2015



Projection Methodology

(MC modified)

■ MA, RI, CT, NJ, NC

- 2016 wave 1-4 landings
- 2015 proportion of landings by wave
- Standard projection methodology

■ NY, VA

- 2016 wave 1-4 landings
- 2013-2015 proportion of landings by wave

■ DE, MD

- Average landings, 2013-2015



Projections by State

(MC modified)

State	2016 Wave 1-4 Landings (pounds)	2016 Projected Annual Landings (pounds)	% of Projected 2016 Total Landings
ME	0	0	0%
NH	0	0	0%
MA	1,436,206	1,783,722	28%
RI	574,348	670,558	10%
CT	535,889	1,179,421	18%
NY	1,398,169	2,350,147	37%
NJ	40,263	394,998	6%
DE	0	196	0%
MD	0	68	0%
VA	28,396	56,577	1%
NC	0	0	0%
Total	4,013,271	6,435,422	100%

2013-2015 Landings by Wave

State	Wave			
	3	4	5	6
MA	71%	15%	14%	0%
RI	19%	53%	28%	0%
CT	3%	38%	59%	0%
NY	7%	49%	42%	2%
NJ	0%	2%	98%	0%
DE	0%	5%	0%	95%
MD	0%	0%	0%	100%
VA	0%	57%	43%	0%
NC	41%	25%	34%	0%
Coast-wide	31%	35%	33%	1%

2017 Reduction

2017 RHL	5.50 mil lb
2016 Projected Landings	Initial: 7.70 mil lb
	MC modified: 6.44 mil lb
Reduction Needed	Initial: -29%
	MC modified: -15%

Initial Staff Recommendation

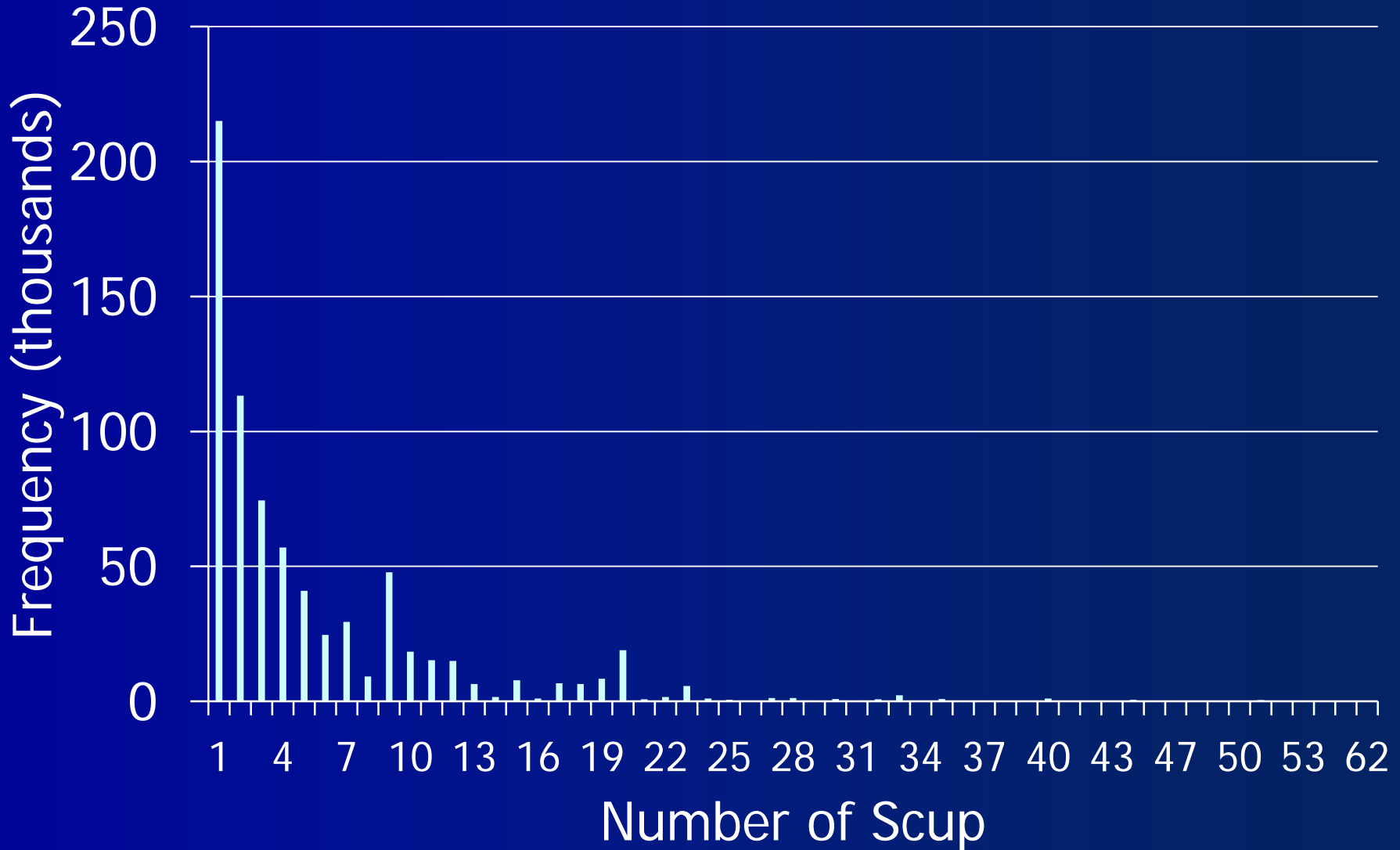
- 20 fish federal waters bag limit
 - Based on 2011 MRFSS wave 1-4 catch per angler data
 - 28% reduction
- No changes to season, minimum size

New Information

- 2015 MRIP landings/angler/trip (all waves)
- Provisional/draft SAS code
 - 20 fish bag = 6% reduction
 - 15 fish bag = 12% reduction
 - 13 fish bag = 15% reduction
 - 10 fish bag = 22% reduction
 - 8 fish bag = 29% reduction



Landings Frequency



Monitoring Committee

- Modified projections –15% reduction
- **Decrease federal bag limit from 50 to 40 scup**
 - Only 2% of harvest from federal waters
 - No changes to federal season or size limit
- **States should decrease their bag limits to achieve needed reduction**
 - To be discussed at Jan 31-Feb 2 Board meeting, after preliminary wave 5 data available (reduction % may change)

Other MC Comments

- **Uncertainty in final 2016 MRIP estimates**
 - Wave 5 important for scup, but estimates not published until mid Dec
 - Possible year-end adjustments for low sample sizes
- **Reduction will be re-calculated after wave 5 preliminary estimates available**
- **Benefits of uniformity among state measures**
 - Easier to predict how changes will impact harvest
- **In most states, no MRIP sampling in wave 1, but scup fishery is open in NJ-NC**

AP Comments

High agreement:

A “manufactured crisis”

- SSB is 210% of target
- Council’s risk policy prevents effective management of rebuilt stocks and should be modified

AP Comments

(Not consensus statements)

- Data concerns

- Concerns with MRIP data

- CT and VA landings seem too high

- Private docks not sampled

- 15% assumed discard mortality too high

AP Comments

(Not consensus statements)

■ Management measures

- Bag limit with no size limit – eliminate discards
 - Can't entirely eliminate; some anglers on party boats don't want scup
- 40 fish bag limit won't have major impacts
 - High bag limits help attract party/charter customers
- 13 fish bag limit would destroy for-hire fleet
- High scup biomass is negatively impacting other species (e.g. lobsters, clams, crabs)

Summary

- 15% reduction needed to constrain landings to 2017 RHL (may change after wave 5 data available)
- MC/staff recommendation:
 - Federal: 40 scup bag, *status quo* size and season
 - States achieve needed reduction through further reductions in bag limit
- Option: if states don't take required reduction, then coast-wide 13 scup bag

Current FMP Options for Scup



Scup

- Coastwide measures (in both state and federal waters)

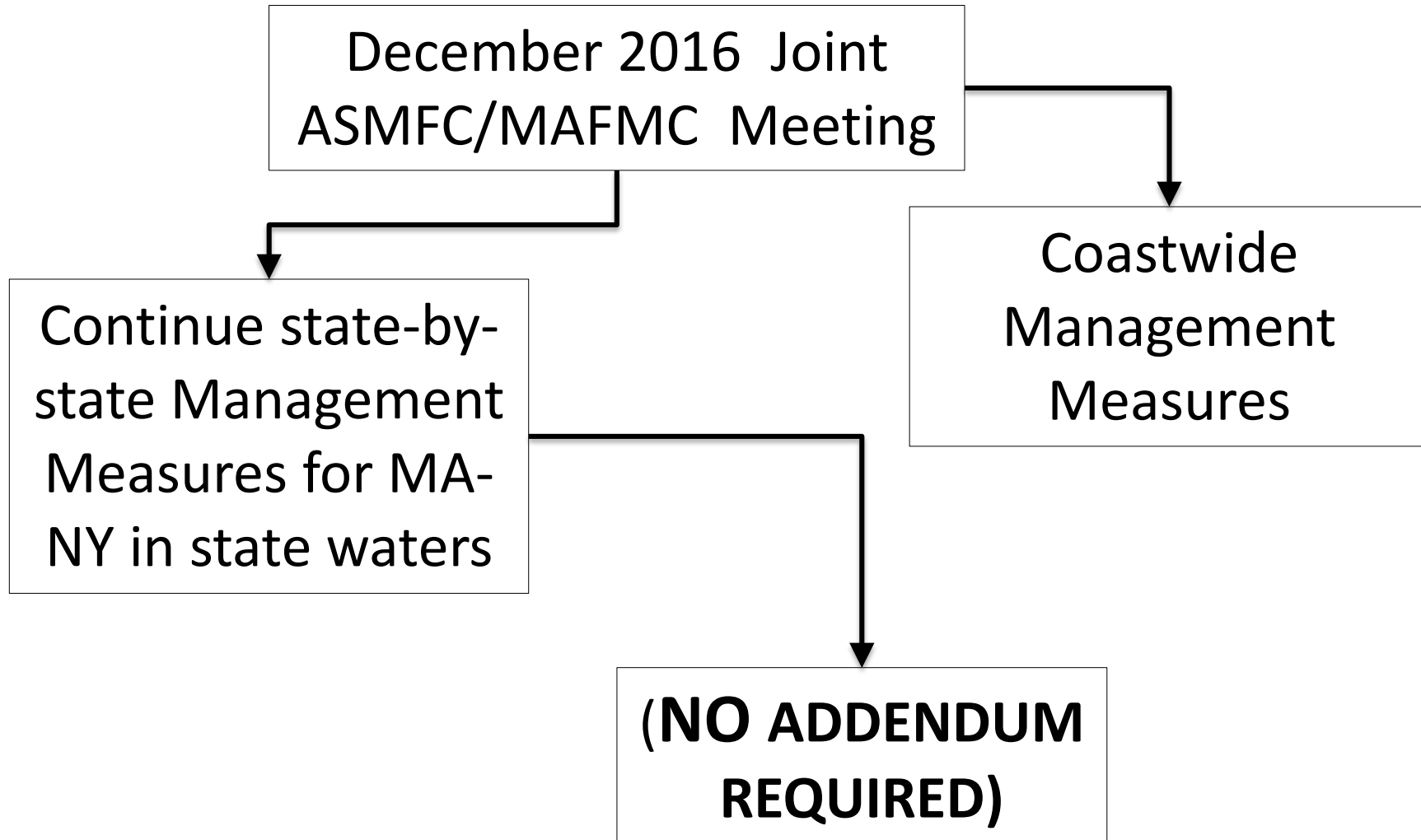
or

- Addendum XI (2004)
 - Ad-Hoc region of MA-NY

2017 Scup Management



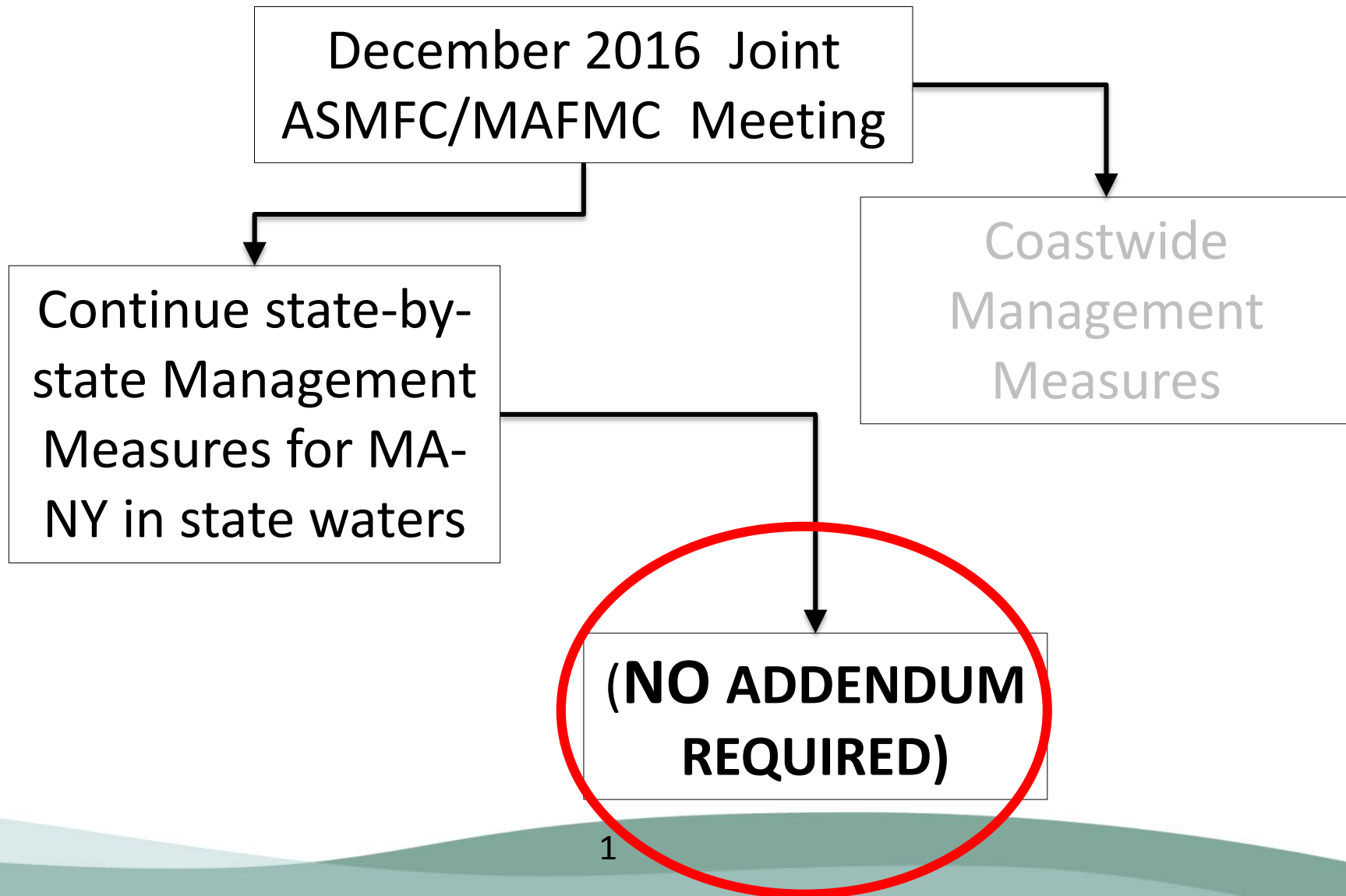
Annual Decision Tree



2017 Scup Management



Annual Decision Tree



Timetable moving forward: Scup



- December 2016
 - Board and Council set Federal Management Measures
 - Board continues regional approach (MOTION NEEDED)
- December 2016-January 2017
 - TC Members from MA-NY develop proposals to achieve needed reduction
 - DUE to ASMFC STAFF: **COB Monday January 9th**
 - TC conference call week of Jan 9th
 - TC conference call summary and proposals added to ASMFC Winter meeting materials
- February 2017
 - Present Proposals to Board at ASMFC Winter Meeting
 - Board considers methodology used and approval of proposals

Timetable moving forward: Scup cont'd



- February-April 2017
 - States implement measures through state process
 - Submit final measures to ASMFC staff by **March 1, 2017**

Decision Points

- Council and Board:

- Federal 2017 recreational measures

- Board:

- Continue regional approach in state waters?

Questions/Discussion



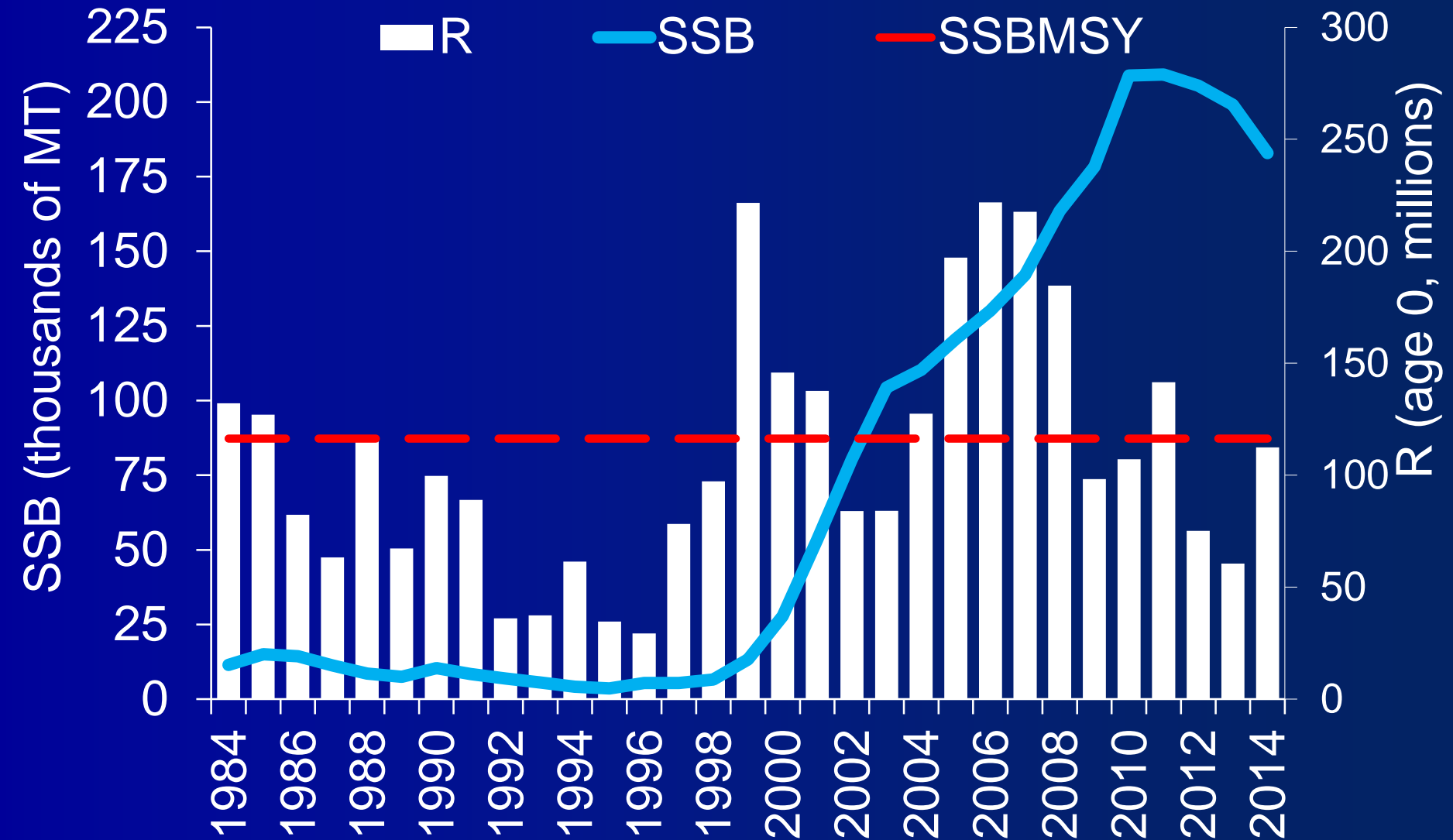
MRIP – 2016 PSEs

Wave	State	PSE
MAY/JUNE	VIRGINIA	104.4
JULY/AUGUST	VIRGINIA	101.5
JULY/AUGUST	NEW JERSEY	61.9
MAY/JUNE	RHODE ISLAND	56
MAY/JUNE	CONNECTICUT	39.8
MAY/JUNE	NEW YORK	39.1
JULY/AUGUST	MASSACHUSETTS	34
JULY/AUGUST	RHODE ISLAND	29.3
MAY/JUNE	MASSACHUSETTS	28.5
JULY/AUGUST	CONNECTICUT	27.3
JULY/AUGUST	NEW YORK	17.7

MRIP – 2015 PSEs >50

Wave	State	PSE
SEPTEMBER/OCTOBER	NORTH CAROLINA	103.1
JULY/AUGUST	NORTH CAROLINA	101.5
SEPTEMBER/OCTOBER	VIRGINIA	100.7
MAY/JUNE	NORTH CAROLINA	100.6
JULY/AUGUST	VIRGINIA	98.9
NOVEMBER/DECEMBER	CONNECTICUT	95.8
JULY/AUGUST	NEW JERSEY	85.9
SEPTEMBER/OCTOBER	MASSACHUSETTS	74.3
MAY/JUNE	CONNECTICUT	73.6
MAY/JUNE	NEW YORK	57.6
MAY/JUNE	RHODE ISLAND	53.1

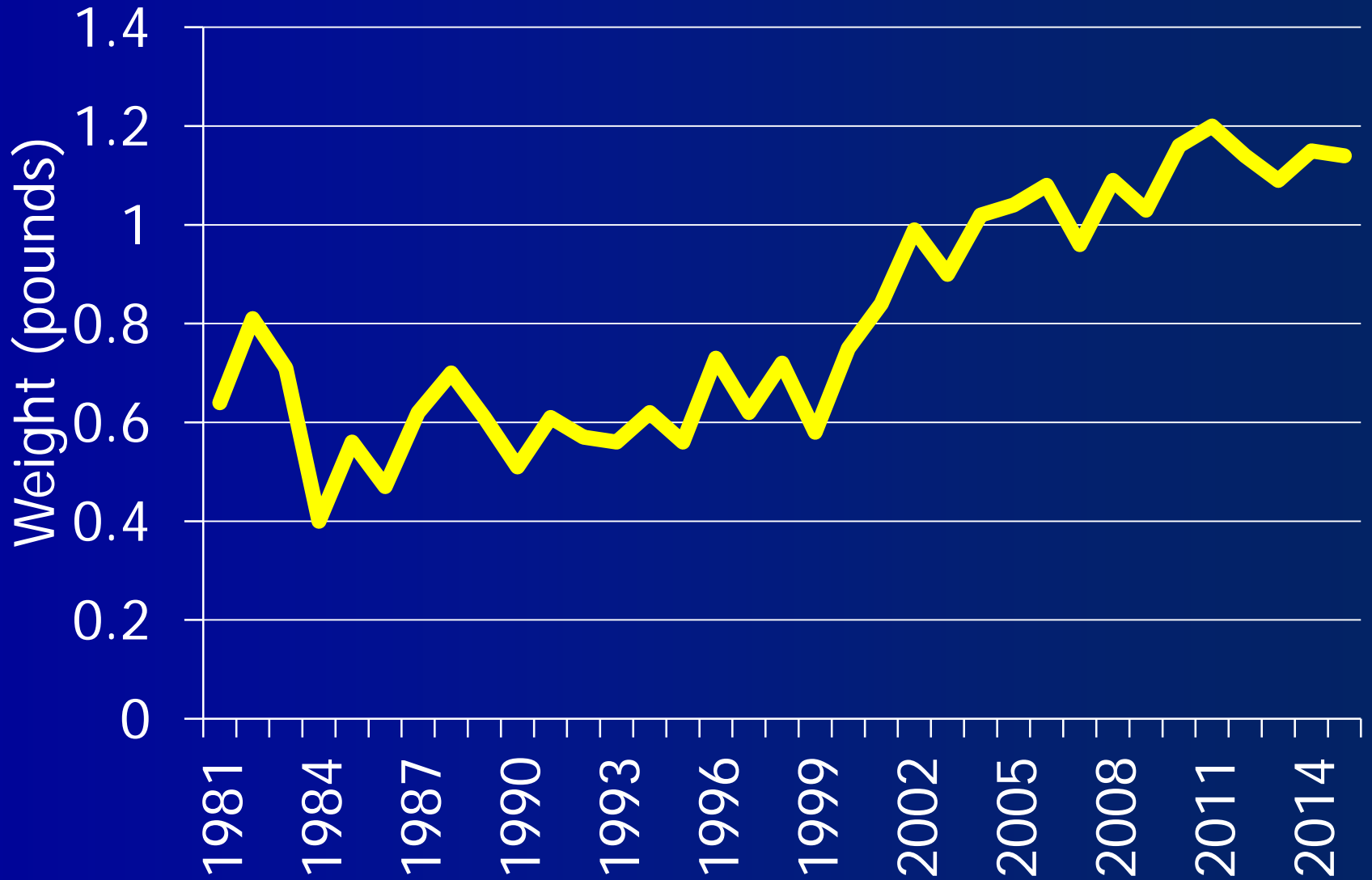
Biomass, Recruitment



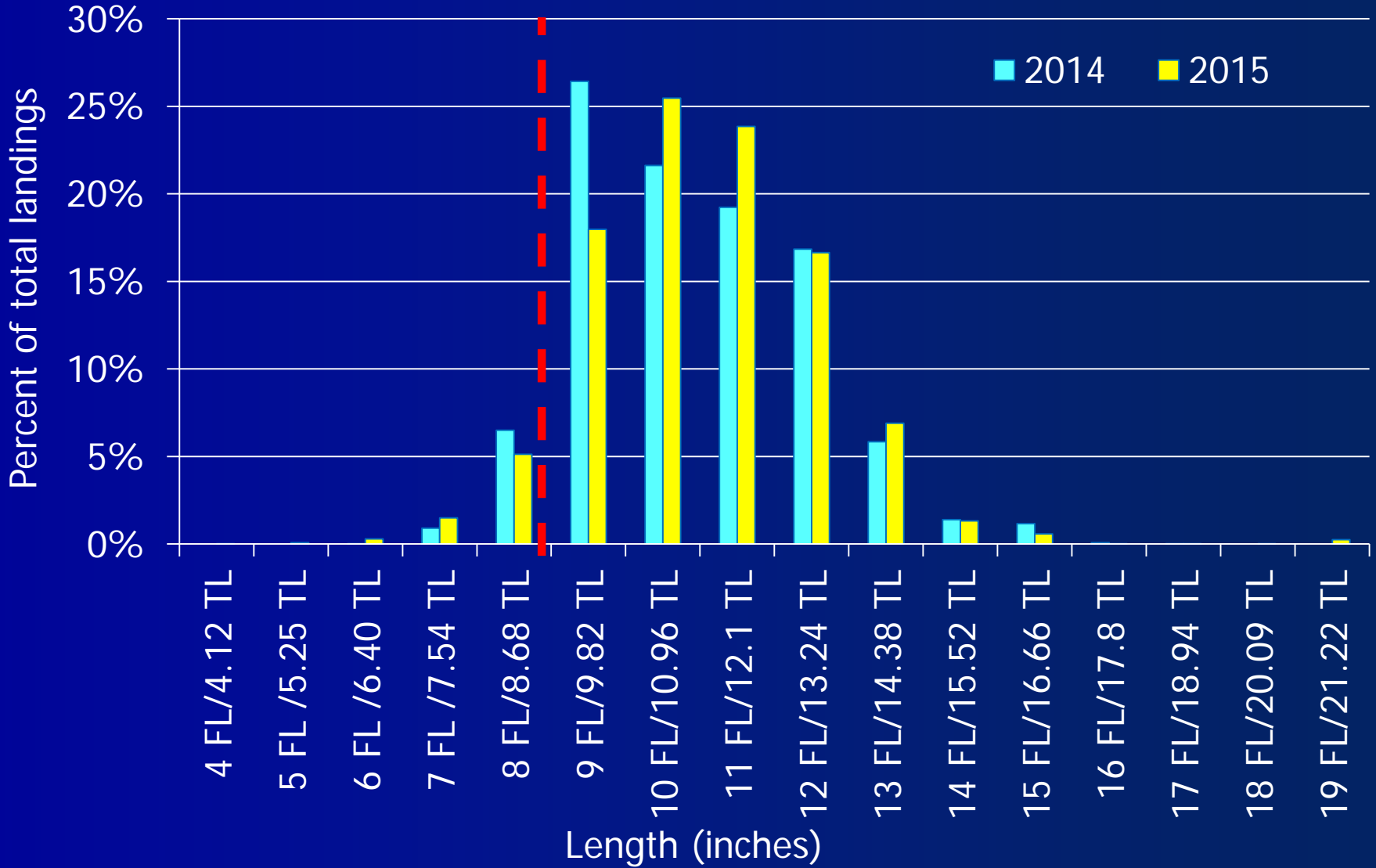
State Targets (Numbers of Scup)

State	2016 Projected Landings	2016 Target	Percent Over/Under
MA	1,521,096	5,181,842	-3%
RI	625,403		
CT	817,081		
NY	1,840,837		
NJ	842,737	None	N/A
DE	176	None	N/A
MD	103	None	N/A
VA	37,342	None	N/A
NC	0	None	N/A
Total	5,684,495		

Mean Weight of Landed Scup



Length Frequencies



2017 RHL

OFL = 32.09

Stock assessment projections



ABC = 28.40

Stock assessment projections + Council risk policy



Recreational ACL = 6.25

22% of ABC (per FMP allocation)



Recreational ACT = 6.25

= ACL (no reduction for management uncertainty)



RHL = 5.50

ACT – projected discards

Projected discards = 0.75

ABC discards portion from stock assessment * 2012-2014 proportion of discards from rec. fishery