

Golden Tilefish



SSC Meeting

14 March 2018

Outline



1. Stock Status
2. Regulatory Review
3. Data Update - NEFSC
4. Recent Fishery Performance
5. Staff Recommendation

Stock Status



- SAW/SARC 58 Peer-reviewed assessment (2014)
- Statistical catch-at-age model (ASAP) replaced ASPIC
- This new model incorporated newly available length and age data to better characterize the population dynamics of the stock

Stock Status (cont'd)



- Model update done in 2017
- Stock not overfished and overfishing was not occurring in 2016 relative to newly develop updated BRPs



Stock Status (cont'd)



- Fishing mortality in 2016 was estimated at $F=0.249$
 - 20% below the fishing mortality threshold of $F=0.310$ ($F_{MSY \text{ proxy}} = F_{38\%}$)
- SSB in 2016 was estimated at 18.69 million pounds (8,479 mt)
 - 89% of the biomass target ($SSB_{MSY \text{ proxy}} = SSB_{38\%}$; 20.93 m lb or 9,492 mt)

Regulatory Review



- March 2017, the SSC recommended a 3-year ABC (2018, 2019, 2020)
- Council's revised approach to the risk policy that seeks to maintain consistency in catch advise

Regulatory Review (cont'd)



- The average ABC over the 3-year = 16.36 m lb or **742 mt**
- The level of uncertainty in the assessment was assumed to require an SSC-specified coefficient of variation (CV)
- Maintained the 2014 determination based on consistency b/w input data and model dynamics, available model diagnostics, and lack of a pathological retrospective pattern

Regulatory Review (cont'd)



- The ABC calculation was based
 - On the F_{MSY} proxy
 - Lognormal coefficient of variability around the OFL of 100%
 - That the ABC is taken every year
 - Risk policy for a typical life history

Regulatory Review (cont'd)



- Approach was used by the SSC because there is no is no strong trend in stock biomass in recent years
- Recommended the ABCs be re-examined annually in light of substantial changes in the size distribution in the catch or in the spatial distribution of the fishery
- Important as the 2013 year class fully recruits into the fishery over the next two years

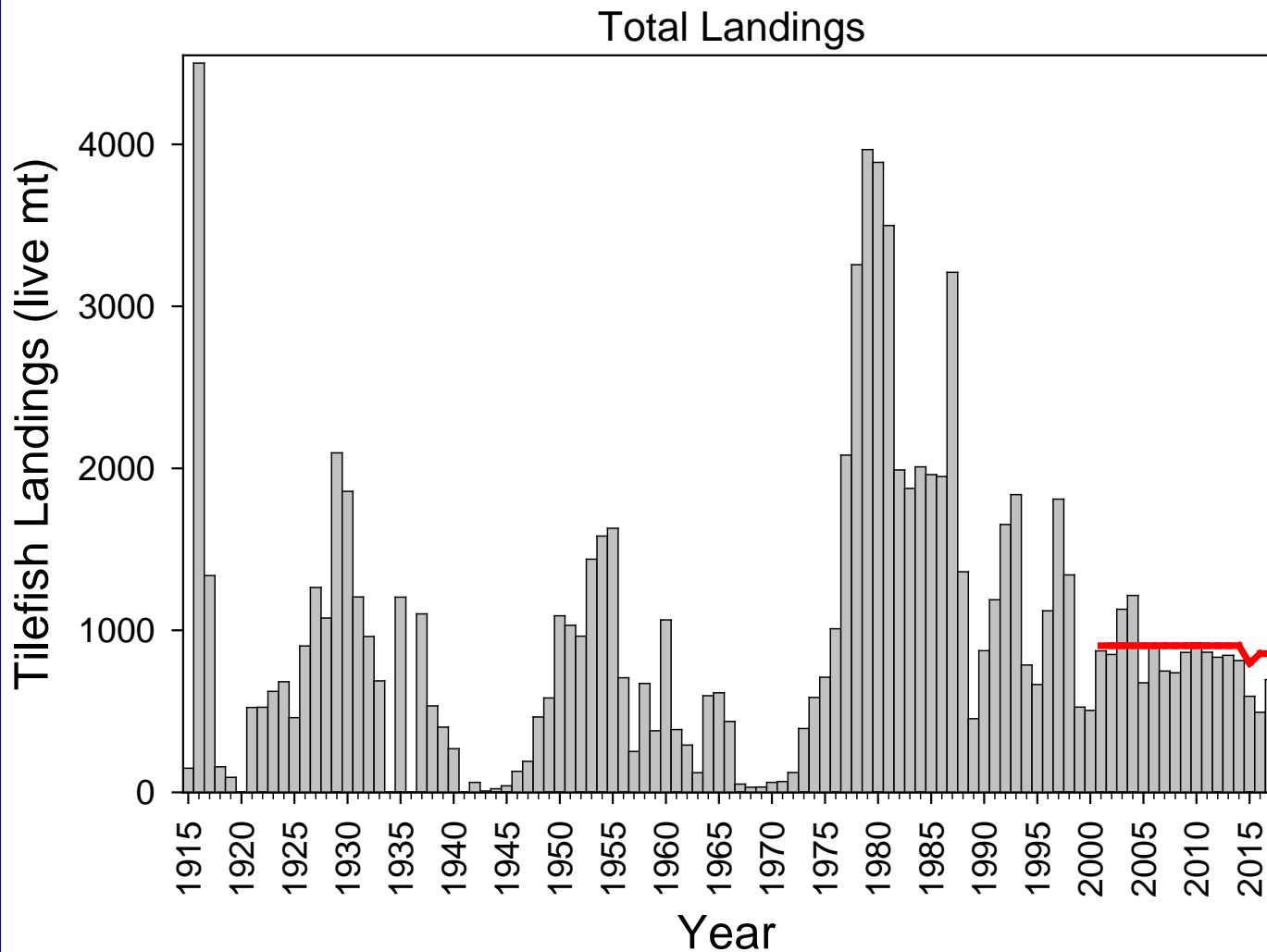
Data Update - NEFSC



- Commercial landings
- CPUE - longline fishery
- Landings size distribution
- Commercial landings broken down into smaller areas

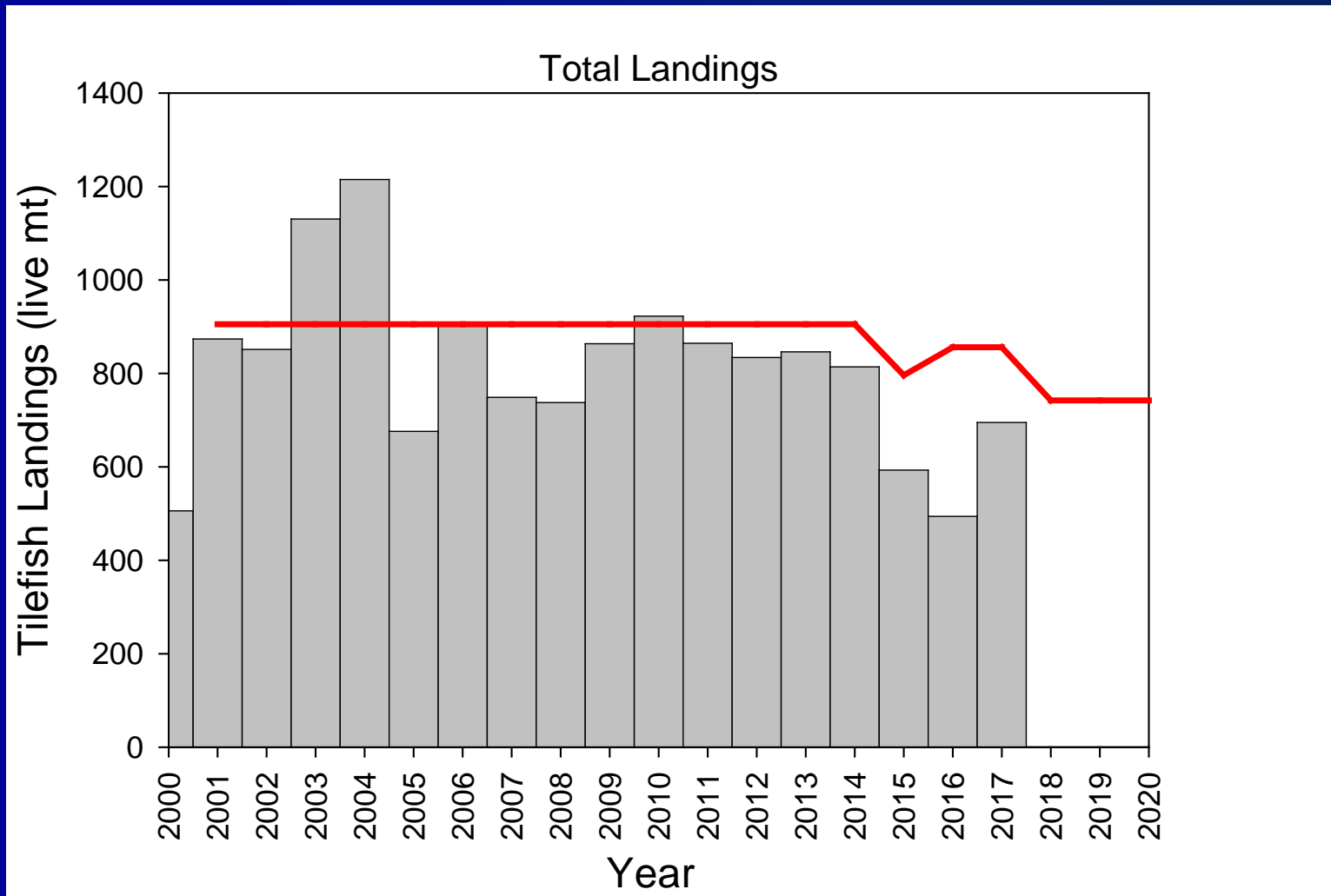
Data Update – NEFSC (cont'd)

Figure 1



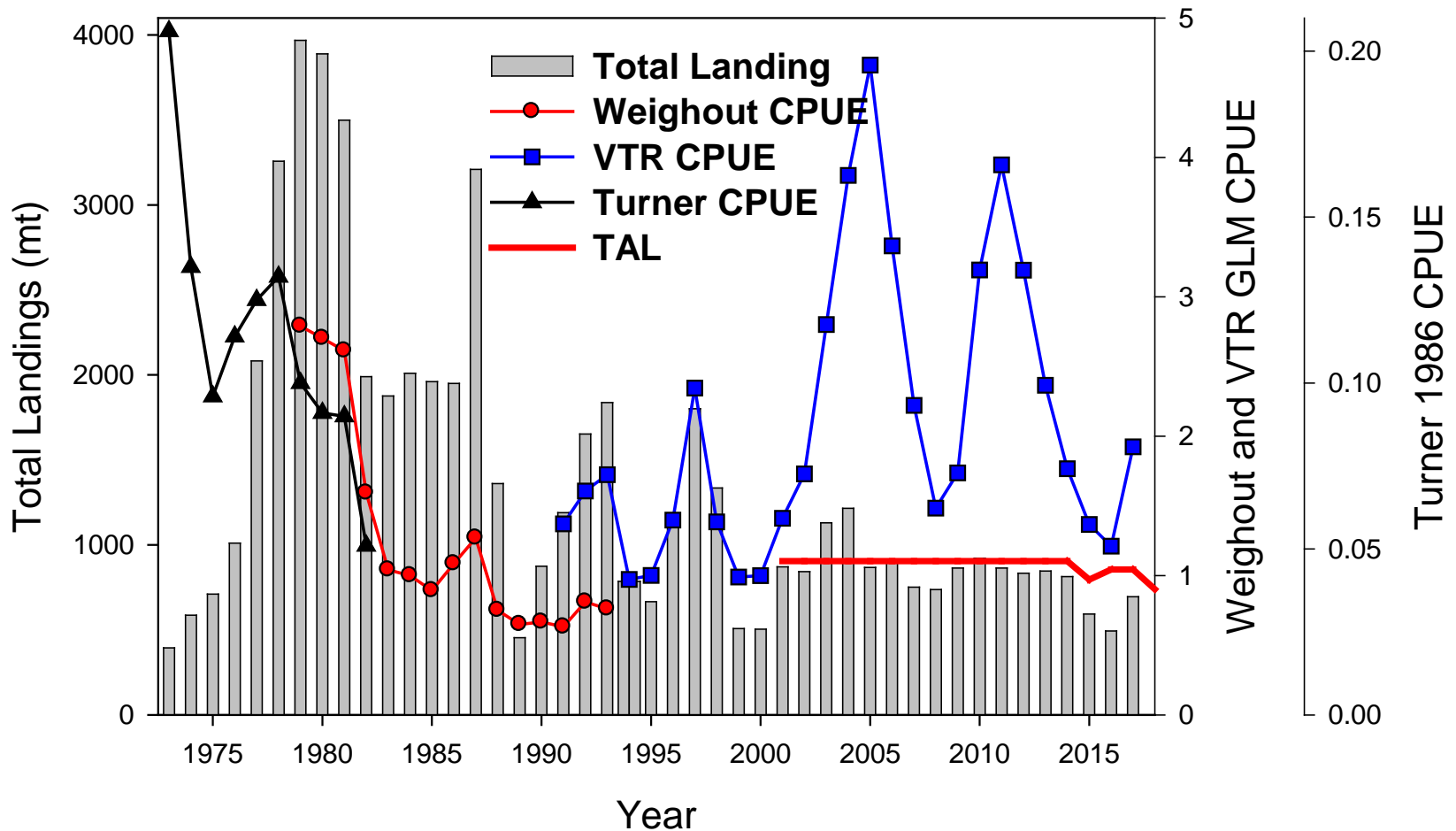
Data Update – NEFSC (cont'd)

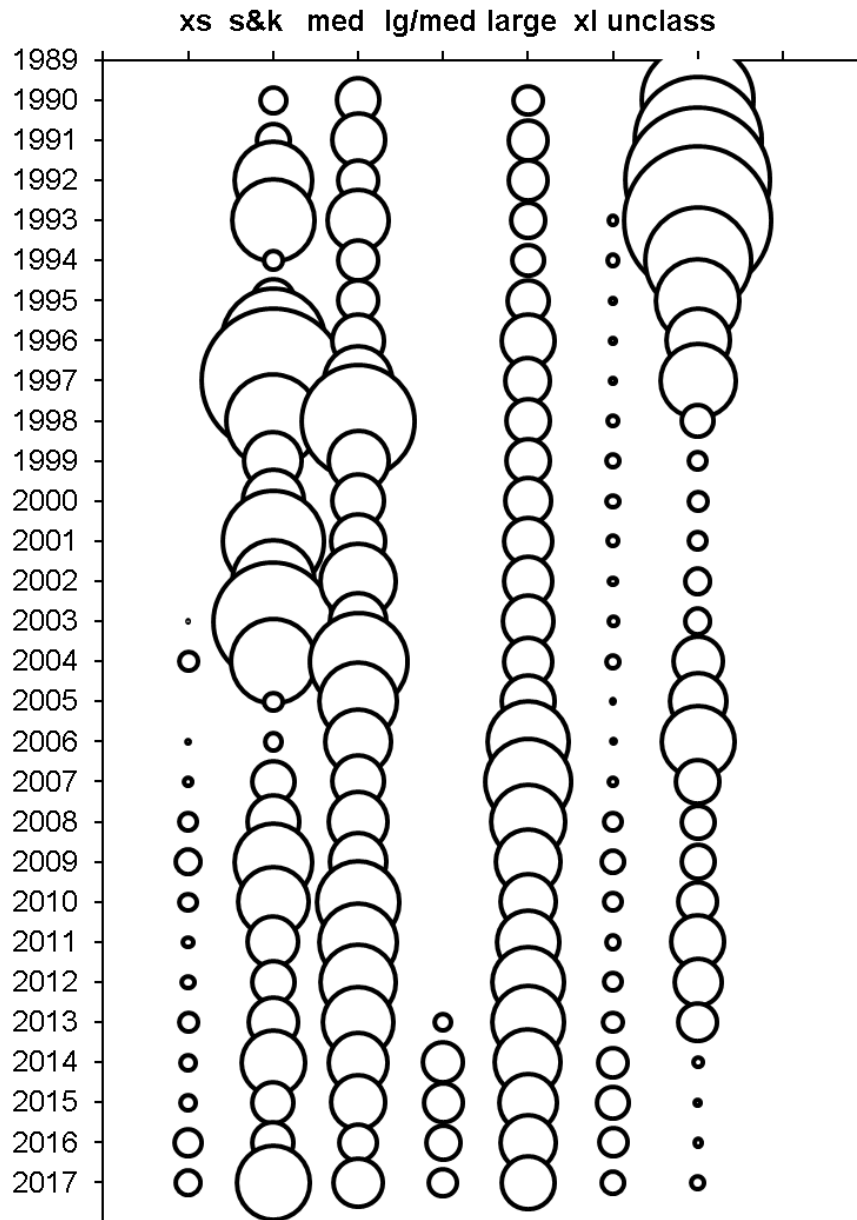
Figure 1



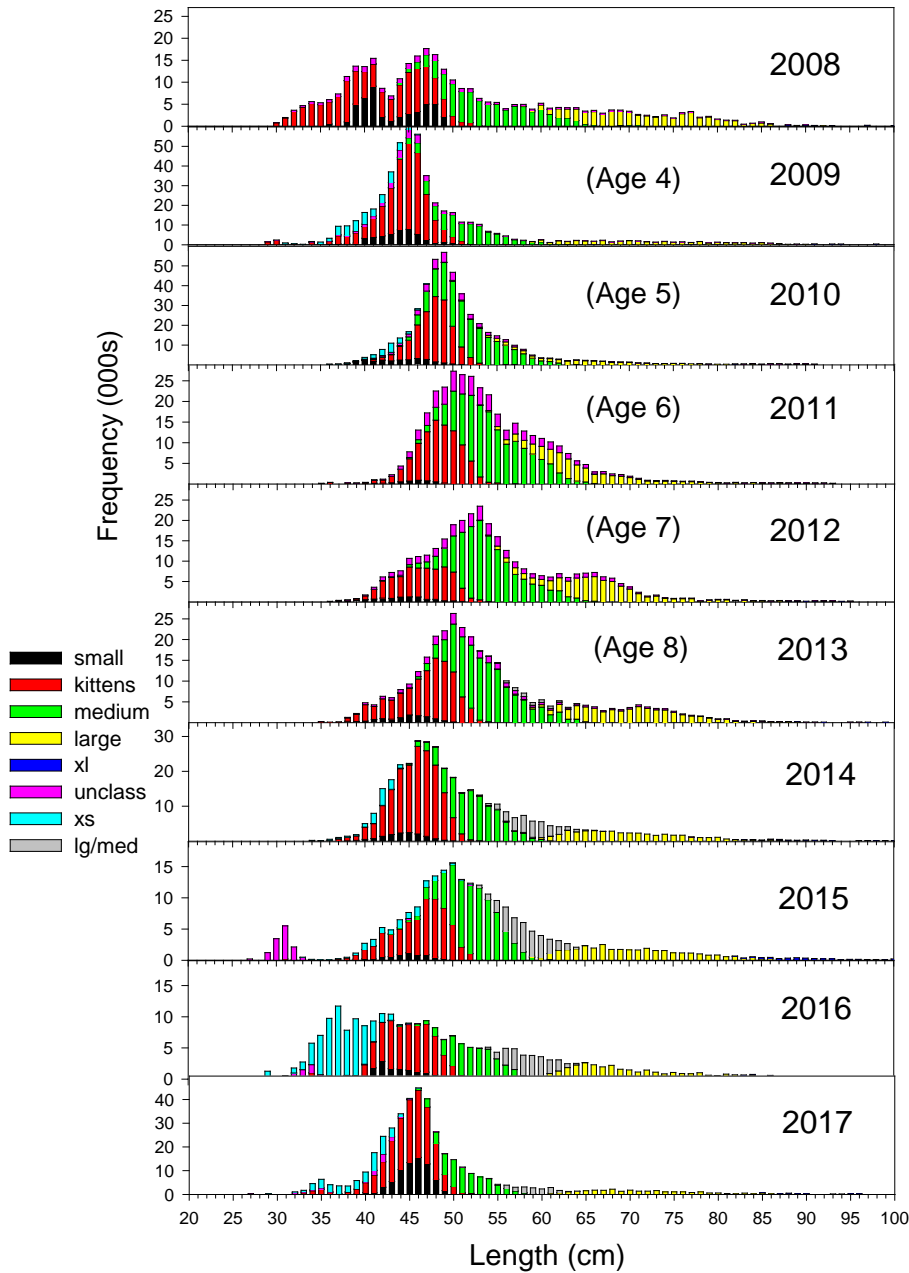
Data Update – NEFSC (cont'd)

Figure 5





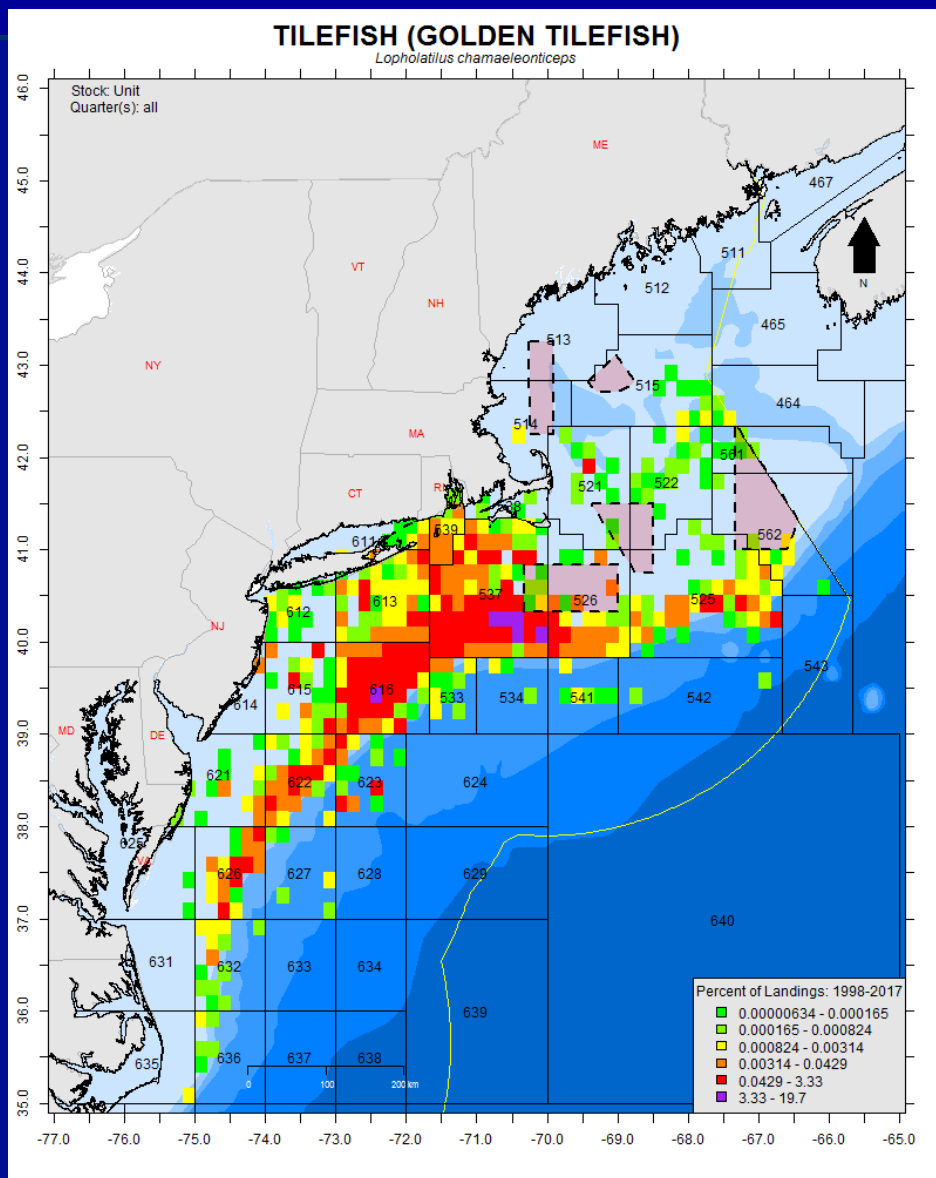
Bubble plot of Golden tilefish landings by market category (Fig 7 of data update)



Expanded length frequency distributions from 2008 to 2017 (Fig 10 of the data update)

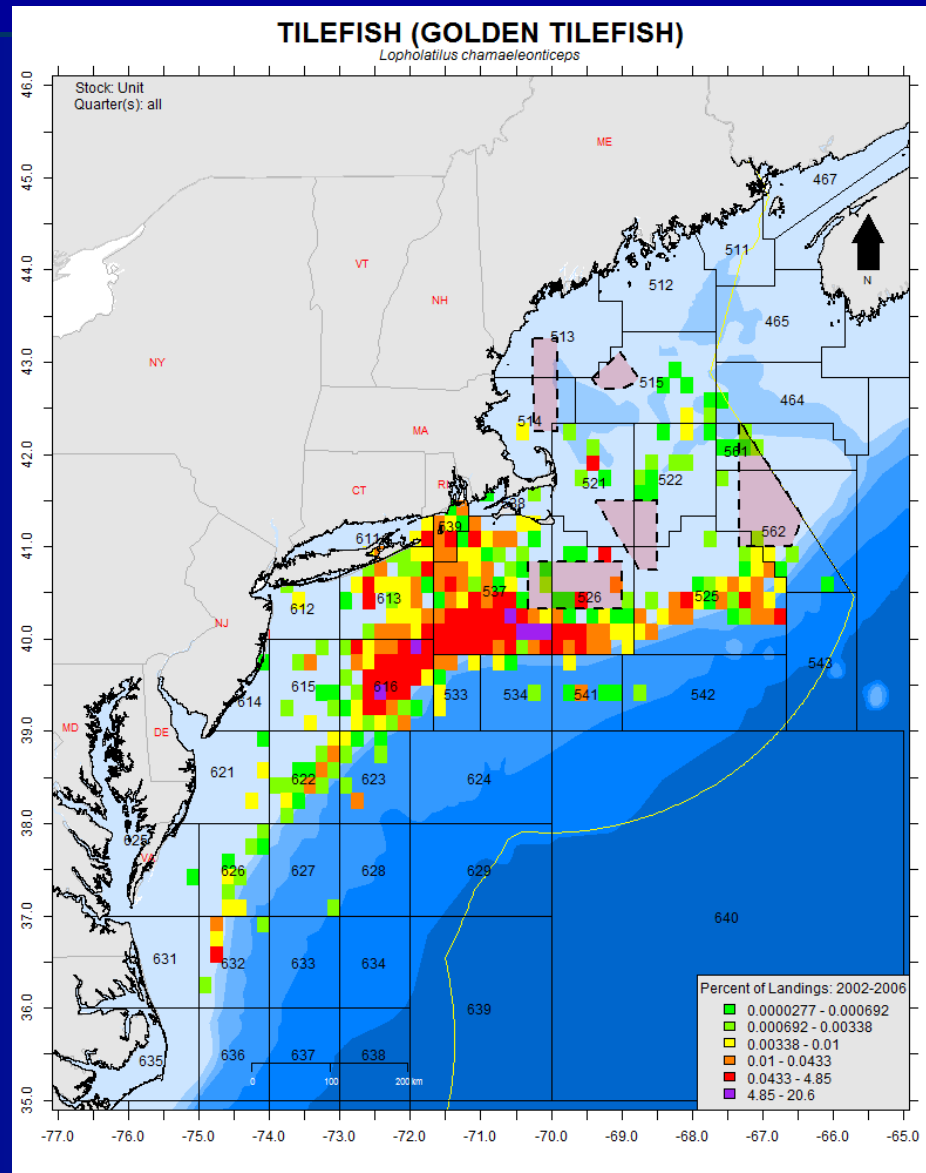
Data Update – NEFSC (cont'd)

App 1 Figure



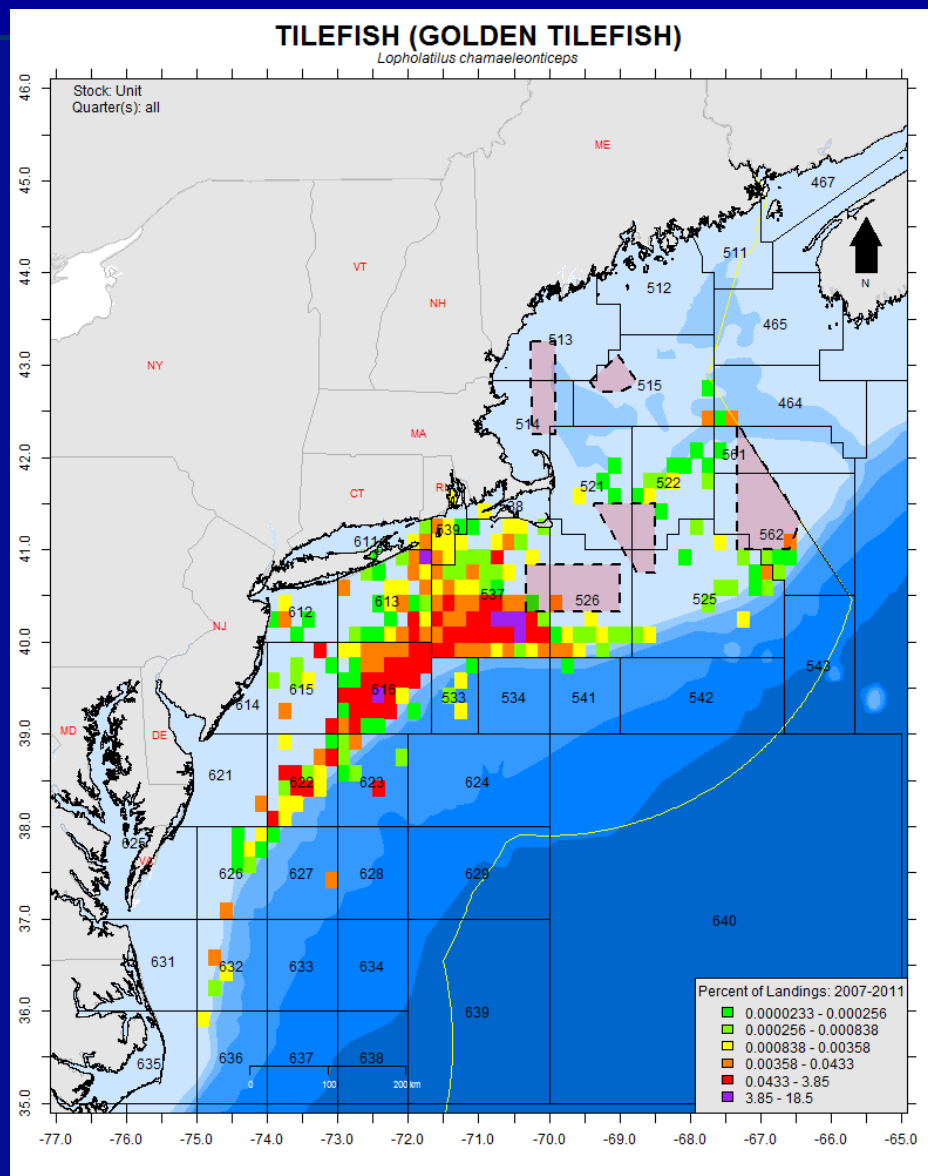
Data Update – NEFSC (cont'd)

App 1 Figure



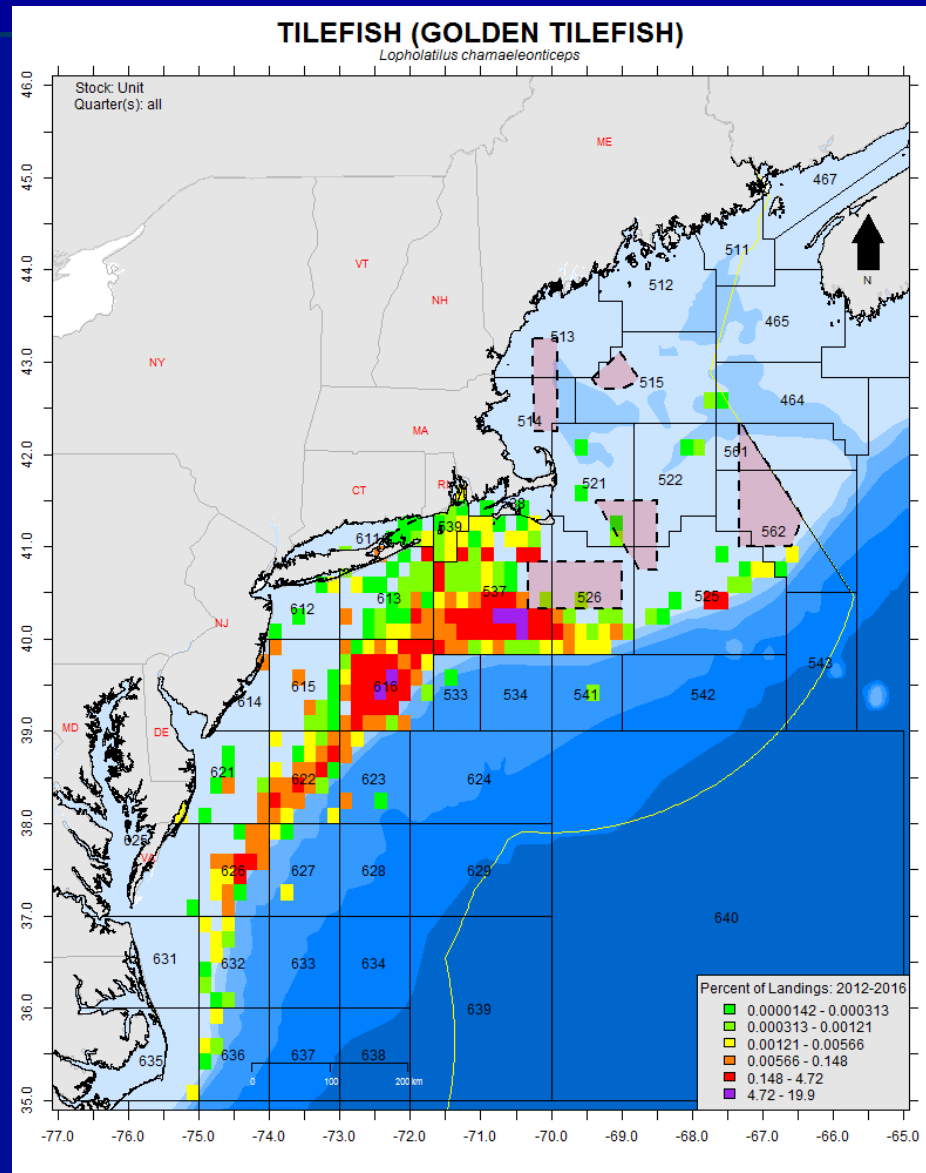
Data Update – NEFSC (cont'd)

App 1 Figure



Data Update – NEFSC (cont'd)

App 1 Figure



Fishery Performance



Management Measures	2010	2011	2012	2013	2014	2015	2016	2017	2018	2019	2020
ABC (m lb)	-	-	-	2.013	2.013	1.766	1.898	1.898	1.636	1.636	1.636
TAL (m lb)	1.995	1.995	1.995	1.995	1.995	1.755	1.887	1.887	1.627	1.627	1.627
Com. quota-initial (m lb)	1.995	1.995	1.995	1.995	1.995	1.755	1.887	1.887	1.627	1.627	1.627
Com. quota-adjusted (m lb)	1.995	1.995	1.995	1.995	1.995	1.755	1.887	1.887	1.627	1.627	1.627
Com. landings	1.997	1.946	1.874	1.841	1.830	1.354	1.060	1.485	-	-	-
Com. overage/underage (m lb)	+0.002	-0.049	-0.121	-0.154	-0.165	-0.401	-0.827	-0.402	-	-	-
Incidental trip limit (lb)	300	300	500	500	500	500	500	500	500	500	500
Rec. possession limit	8 ^b	8 ^b	8 ^b	8 ^b	8 ^b	8 ^b	8 ^b	8 ^b	8 ^b	8 ^b	8 ^b

Fishery Performance



Management Measures	2010	2011	2012	2013	2014	2015	2016	2017	2018	2019	2020
ABC (m lb)	-	-	-	2.013	2.013	1.766	1.898	1.898	1.636	1.636	1.636
TAL (m lb)	1.995	1.995	1.995	1.995	1.995	1.755	1.887	1.887	1.627	1.627	1.627
Com. quota-initial (m lb)	1.995	1.995	1.995	1.995	1.995	1.755	1.887	1.887	1.627	1.627	1.627
Com. quota-adjusted (m lb)	1.995	1.995	1.995	1.995	1.995	1.755	1.887	1.887	1.627	1.627	1.627
Com. landings	1.997	1.946	1.874	1.841	1.830	1.354	1.060	1.485	-	-	-
Com. overage/underage (m lb)	+0.002	-0.049	-0.121	-0.154	-0.165	-0.401	-0.827	-0.402	-	-	-
Incidental trip limit (lb)	300	300	500	500	500	500	500	500	500	500	500
Rec. possession limit	8 ^b	8 ^b	8 ^b	8 ^b	8 ^b	8 ^b	8 ^b	8 ^b	8 ^b	8 ^b	8 ^b

Recreational Trends



- Recreational landings and catches are low (MRIP and VTR data)
- In the assessment, recreational catches are estimated to be low and not included as a component of removals
- GTF flowchart - recreational catches can be accommodated under scientific uncertainty or management uncertainty

Recreational Trends (cont'd)



Year	Number of golden tilefish kept	Mean effort
1996	81	1.4
1997	400	7.5
1998	243	8.1
1999	91	0.4
2000	147	0.5
2001	172	0.7
2002	774	0.9
2003	991	1.6
2004	737	1.2
2005	498	0.9
2006	477	1.2
2007	1,077	1.2
2008	1,100	1.3
2009	1,451	1.3
2010	1,866	2.0
2011	2,938	3.4
2012	6,424	2.8
2013	6,560	3.2
2014	6,958	3.1
2015	8,297	4.2
2016	5,919	4.1
2017	2,334	3.3
All	49,535	2.6

Discard Trends



- No commercial discards of gtf in directed gtf trips (according to VTR data)
- Commercial discards are low in non-directed trips
- Commercial discards not included in the assessment

Discard Trends (cont'd)



- According to the "Discard Estimation, Precision, and Sample Size Analysis" conducted by the NEFSC, discard estimations for commercial fisheries are low (mostly large/small mesh trawls and gillnets)
- NEFSC – avg. 9,393 pounds (~4 mt); 2012-2016

Incidental Landings

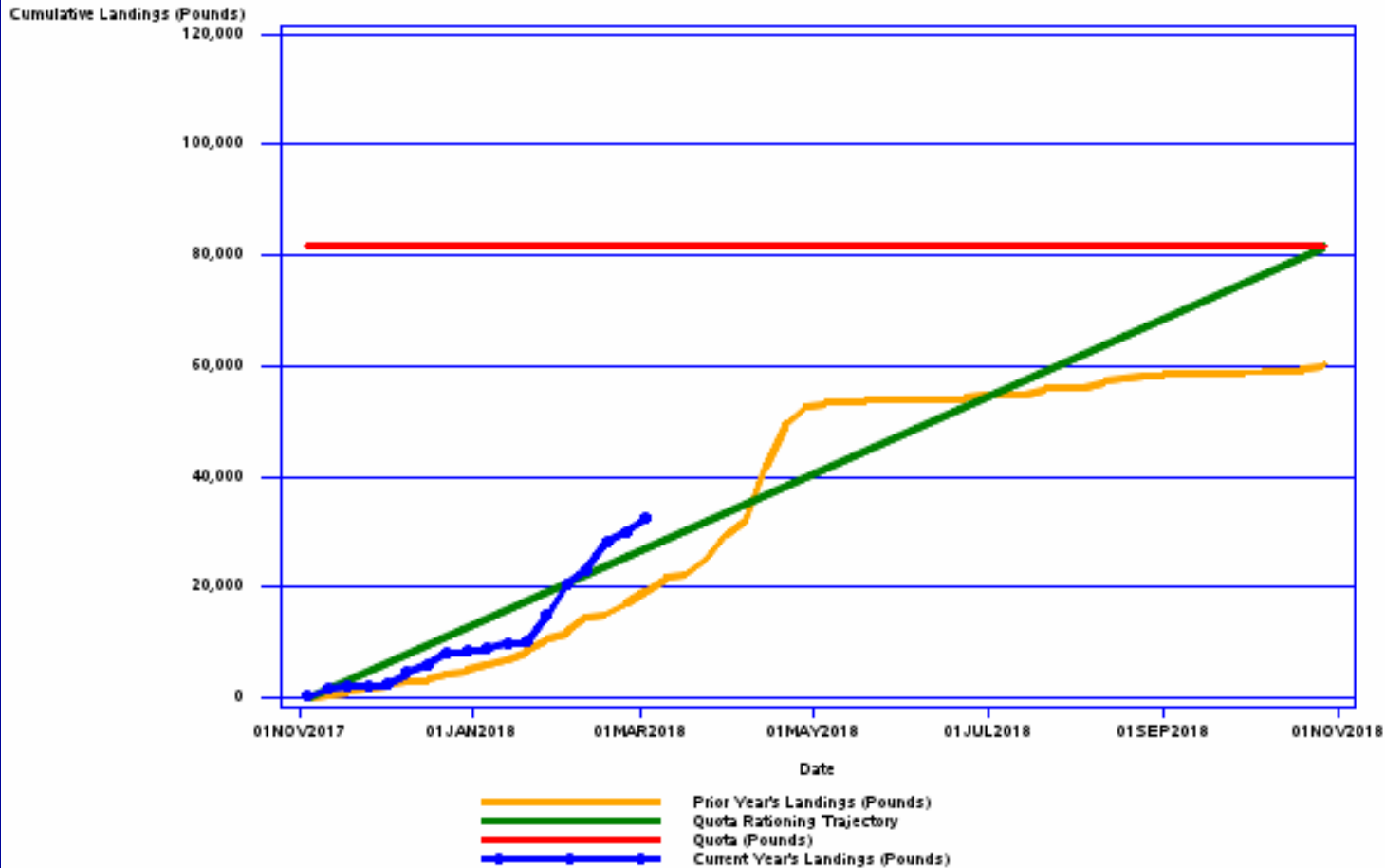


Fishing year	Landings (pounds)	Incidental quota (pounds)	Percent of quota landed (%)
2013	36,442	99,750	37
2014	44,594	99,750	45
2015	18,839	87,744	21
2016	20,929	94,357	22
2017	60,409	94,357	64

Incidental Landings (cont'd)



Incidental Golden Tilefish Quota Monitoring Report



Fishery Performance Report

Market Factors



- Prices continue to be stable in all market categories, except the for the small-kitten category
 - Small and kitten category landings increasing, they represent a large proportion of the catch
- Stable prices
 - Time of landings coordination
 - Avoid market gluts
 - Spreading landing throughout the year
 - Marketing efforts

Fishery Performance Report

Market Factors (cont'd)



- Having a steady year-round supply of tilefish has influenced the positive market development for this product
- Due to the high cost of operations, tilefish vessels fish as close to home port as possible
 - *Illex* from 50¢ to \$1 per pound since Oct 2017

FPR - Environmental



- Industry has observed no tilefish aggregation changes due to changes in water temperature
- Dogfish interactions reduces tilefish catches and strongly affect where people fish

FPR - Mgmt. Issues



- IFQ system benefits - can plan fishing through the year. Working closely with each other and dealers to avoid market gluts

FPR - Fishing Trends



- Current landings overall for the 2018 FY > same time last year
- Small-Kitten category landings increasing (2 to 3.5 pounds); continues to be a large % of overall catch composition
- Fishermen are not moving around much as they are finding a healthy mix of animals in traditional fishing grounds
- Two rec advisors - large aggregations of fish in some southern mid-Atlantic canyons have decreased and that a higher percentage of their catch is comprised of smaller fish

FPR - Recreational Trends



- Five or six headboats directly fish for GTF & BLT but not 100% of the time
- Limited # trips throughout the season (summer time)
- For example, the boat w/ the largest # of scheduled trips (24 trips) do not take all of those trips (weather)

FPR - Recreational Trends (cont'd)



- Reg changes in VA could increase effort for golden
 - 7 fish any golden/blueline combo per angler/trip
 - 8 golden and 7 blueline per angler/trip
- Fed reg changes in the blueline fishery season/closures (Nov 1 - Apr 30) may decrease golden fishing effort

FPR - Other



- Severe winter conditions in the northeast in 2013-2017 affected fishing operations/practices, resulting in longer fishing trips
- Constant harvest strategy working well in rebuilding fishery. Do not want to see different ACL every year

FPRs – Other (cont'd)



- Concerns about directed trips in the incidental category by non-trawl vessels
- Concerns about vessels targeting GTF under the incidental rules. Some of these vessels do not have permitting requirements to sell fish or meet CG safety requirements

FPRs – Other (cont'd)



- Consider differential trip limits (for hire vs private) and longer recreational trips (structured after the Gulf of Mexico regulations)
- Consider recreational allocation

FPRs – Other (cont'd)



- Concerns about relaxing recreational regulations = higher recreational landings; while commercial quota could remain at status quo levels or decrease in the future
- Concerns about increasing any effort, bag limit, while maintaining status quo for the commercial fishery

Staff Recommendations



- Memo to Chris Moore
- Based on the review of the NEFSC data update, FPR, and other available information
- No change to the 2019 fishing year specifications

Questions?

