

# Monkfish Framework 10

Fiona Hogan, NEFMC

**MAFMC**  
**December 13, 2016**



New England  
Fishery Management Council

# Framework 10 Alternatives

---

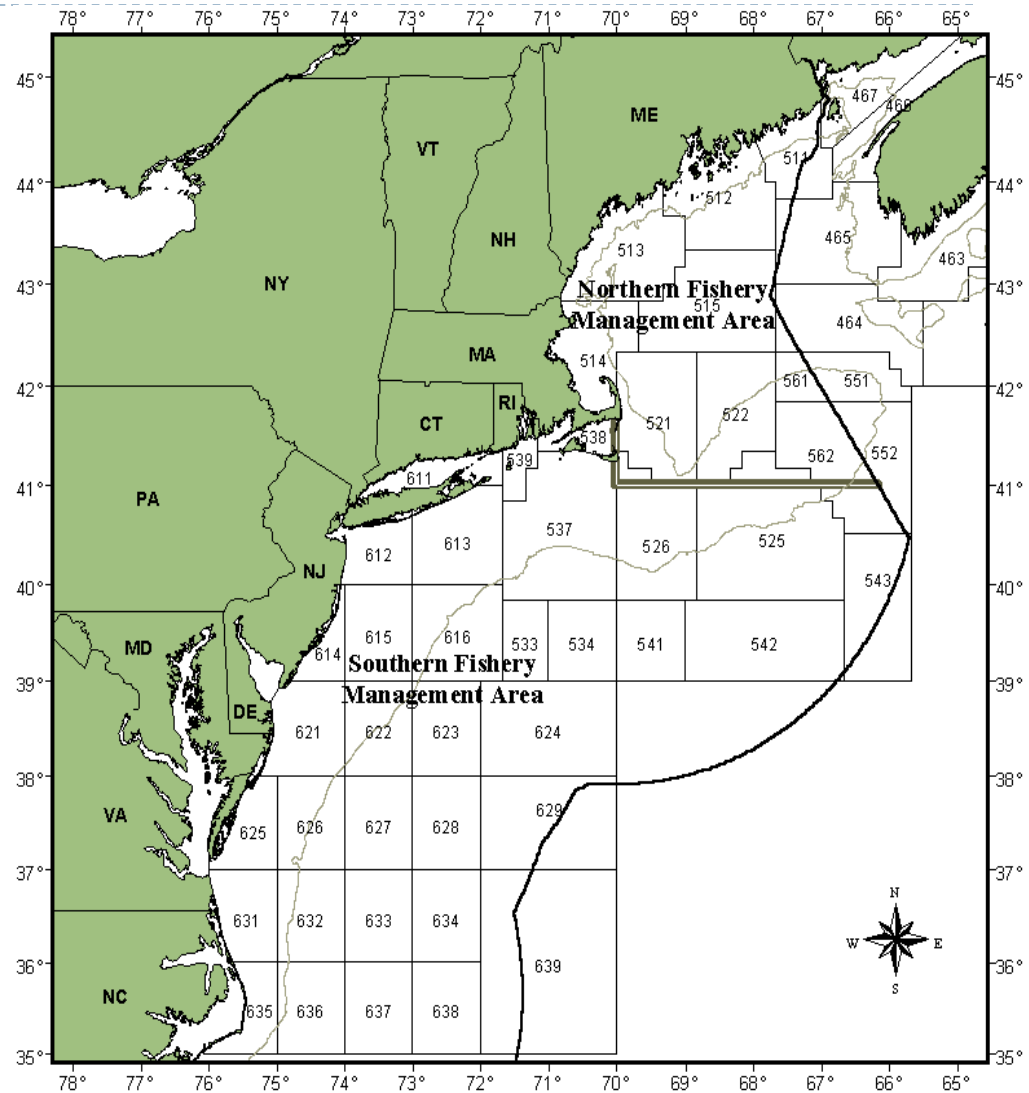
- ▶ **Revised Annual Catch Limits**
  - ▶ Option 3: Sets specs, updates discard rate, reduces management uncertainty buffer to 3% in the NFMA
  - ▶ Option 4: Sets specs, updates discard rate, reduces management uncertainty buffer to 3% in the SFMA
- ▶ **Modifications to Current Monkfish Effort Controls**
  - ▶ DAS allocation in the NFMA
  - ▶ NFMA Trip limits
  - ▶ DAS allocation in the SFMA
  - ▶ Trip limits in the SFMA



# Specifications

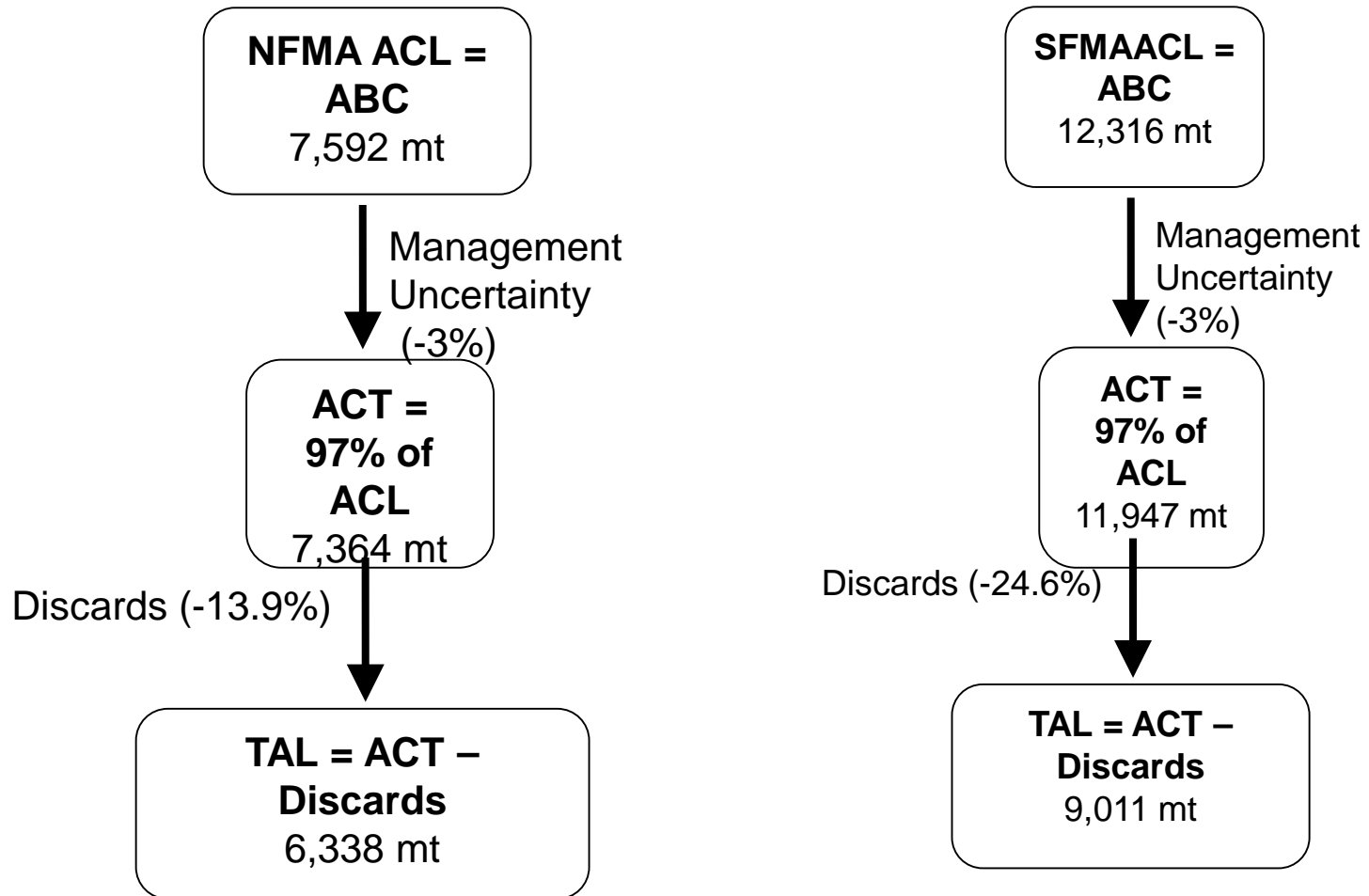
## ► Specifications

- NFMA OFL = 17,805 mt
- NFMA ABC = 7,592 mt
- SFMA OFL = 23,204 mt
- SFMA ABC = 12,316 mt



# 4.1.1.3 and 4.1.1.4

---



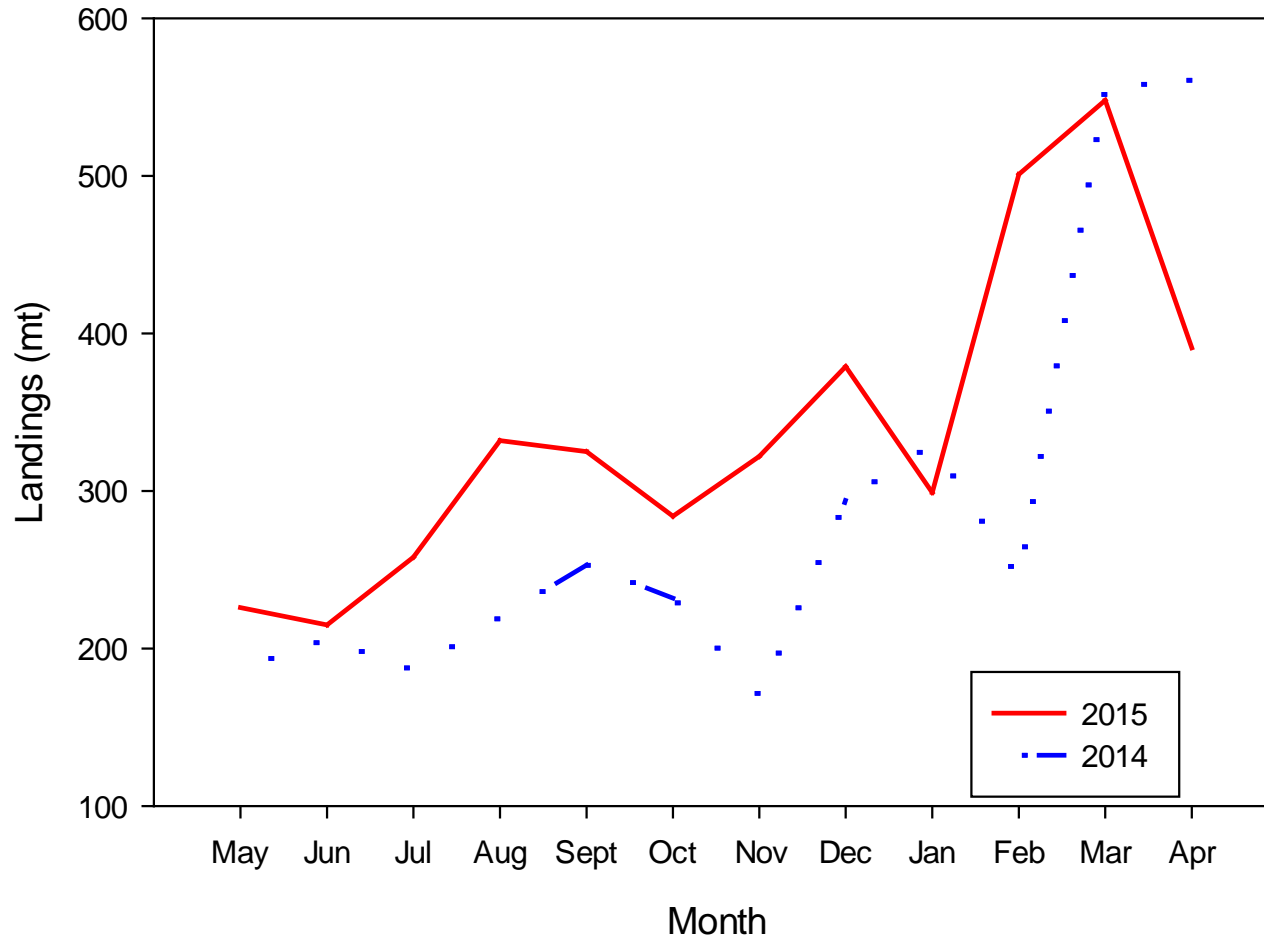
## 7.1.1 ACL Impacts

Fishing Year	Target TAL (mt)	Trip Limits (lb)*		DAS Restrictions**	Landings (mt)	Percent of TAC
		Cat. A & C	Cat. B & D			
2005	13,160	n/a	n/a	40	9,533	72%
2006	7,737	n/a	n/a	40	6,677	86%
2007	5,000	1,250	470	31	5,050	101%
2008	5,000	1,250	470	31	3,528	71%
2009	5,000	1,250	470	31	3,344	67%
2010	5,000	1,250	470	31	2,834	57%
2011	5,854	1,250	600	40	3,699	63%
2012	5,854	1,250	600	40	3,920	67%
2013	5,854	1,250	600	40	3,596	61%
2014	5,854	1,250	600	45	3,444	59%
2015	5,854	1,250	600	45	4,138	71%



# 7.1.1 ACL Impacts

NFMA Monthly Monkfish Landings



## 7.1.1 ACL Impacts

---

<b>Fishing year</b>	<b>NFMA DAS Used</b>	<b>% Total DAS Used in NFMA</b>	<b>% Total DAS allocated Used in NFMA</b>
<b>2009</b>	1097	25%	4%
<b>2010</b>	1109	26%	5%
<b>2011</b>	1157	21%	4%
<b>2012</b>	1164	26%	4%
<b>2013</b>	360	11%	1%
<b>2014</b>	651	16%	2%
<b>2015</b>	728		



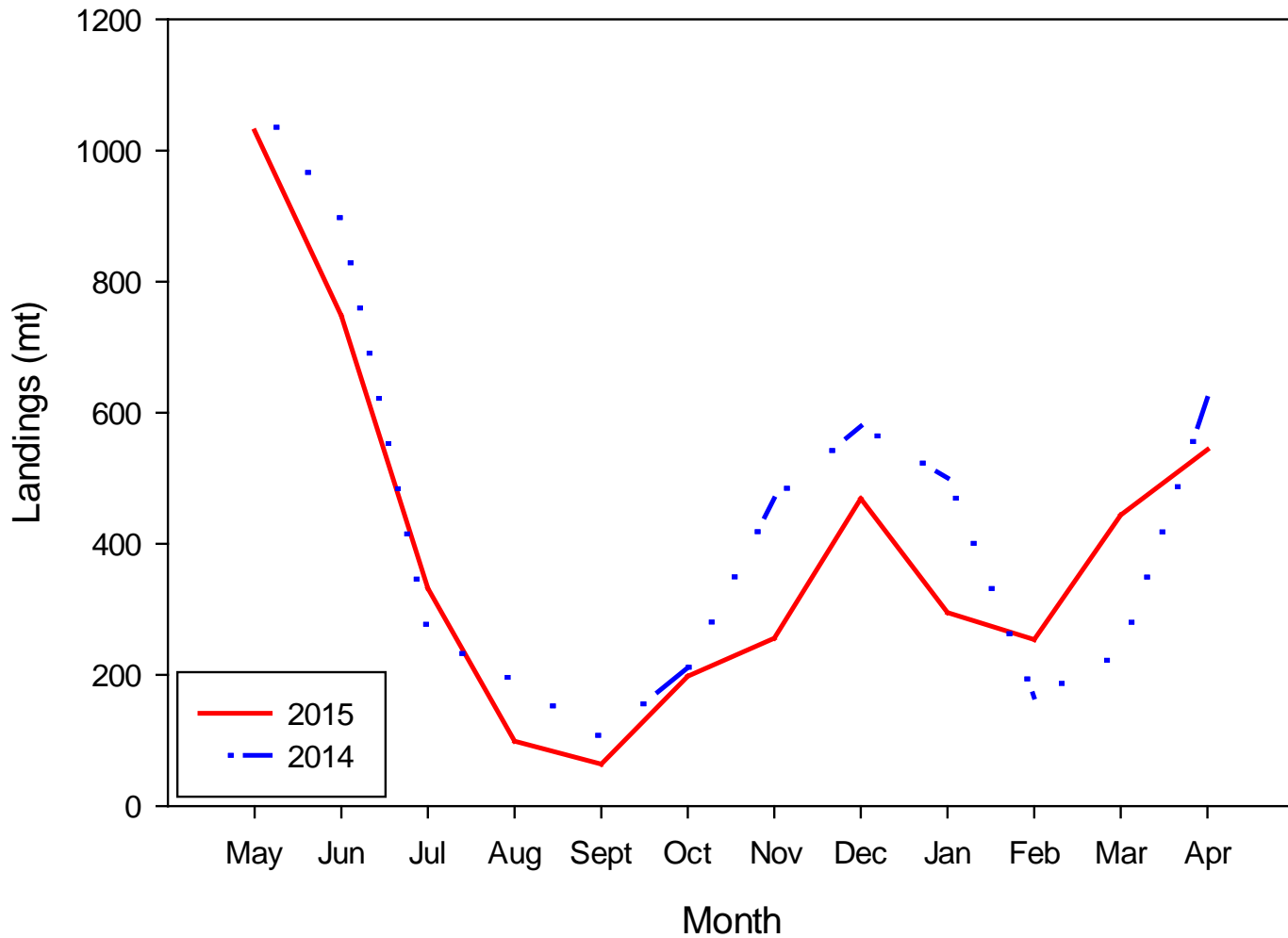
## 7.1.1 ACL Impacts

Fishing Year	Target TAL (mt)	Trip Limits (lb)*		DAS Restrictions **	Landings (mt)	Percent of SFMA TAL
		Cat. A & C	Cat. B & D			
2004	6,772	550	450	28	6,223	92%
2005	9,673	700	600	39.3	9,656	100%
2006	3,667	550	450	12	5,909	161%
2007	5,100	550	450	23	7,180	141%
2008	5,100	550	450	23	6,751	132%
2009	5,100	550	450	23	4,800	94%
2010	5,100	550	450	23	4,484	88%
2011	8,925	550	450	28	5,801	65%
2012	8,925	550	450	28	5,184	58%
2013	8,925	550	450	28	5,088	59%
2014	8,925	610	500	32	5,478	61%
2015	8,925	610	500	32	4,739	53%



# 7.1.1 ACL Impacts

## SFMA Monthly Monkfish Landings



## 7.1.1 ACL Impacts

---

Fishing year	SFMA DAS Used	% Total DAS Used in SFMA	% Total DAS allocated Used in SFMA
2009	3252	75%	13%
2010	3151	74%	13%
2011	4389	79%	14%
2012	3284	74%	10%
2013	3038	89%	10%
2014	3463	84%	10%
2015	2,815	80%	10%



## 7.1.1 ACL Impacts

---

- ▶ Biological impacts: neutral
- ▶ EFH: neutral
- ▶ PR impacts: low negative to neutral
- ▶ Economic impacts: neutral to low positive



# Modify DAS allocation/trip limit in NFMA

---

- ▶ **Option 1: no action**
- ▶ **Option 2: Increase the DAS allocation**
  - ▶ No increase currently proposed
- ▶ **Option 3: Increase the Incidental trip limit on a GF DAS**
  - ▶ Committee recommended 900 lb and 750 lb tail weight/DAS for Category C and D vessels



# NFMA DAS usage

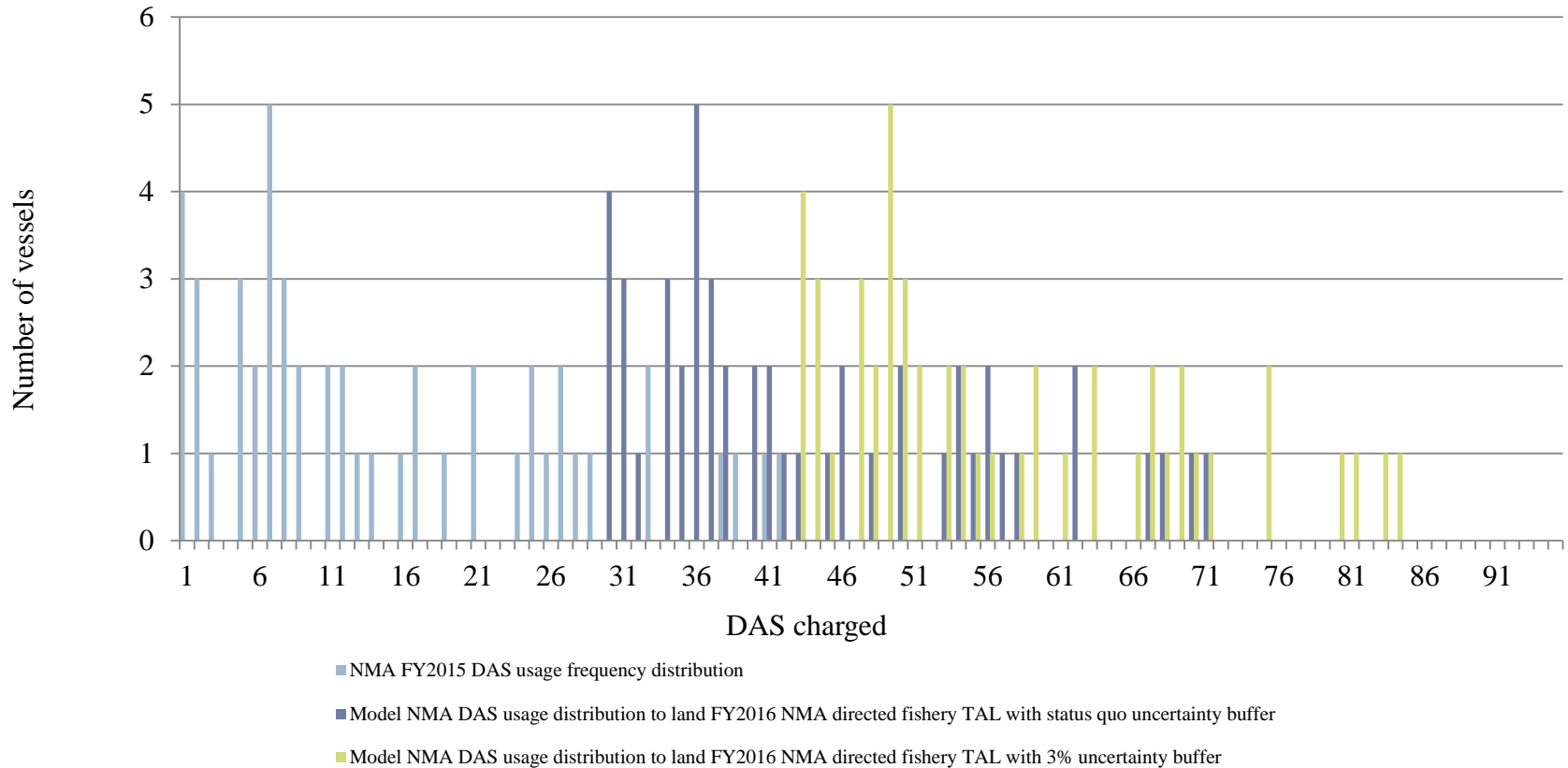


Figure 1. Monkfish Northern Management Area, FY2015 observed and modeled DAS usage by vessel frequency distribution

# C landing pattern

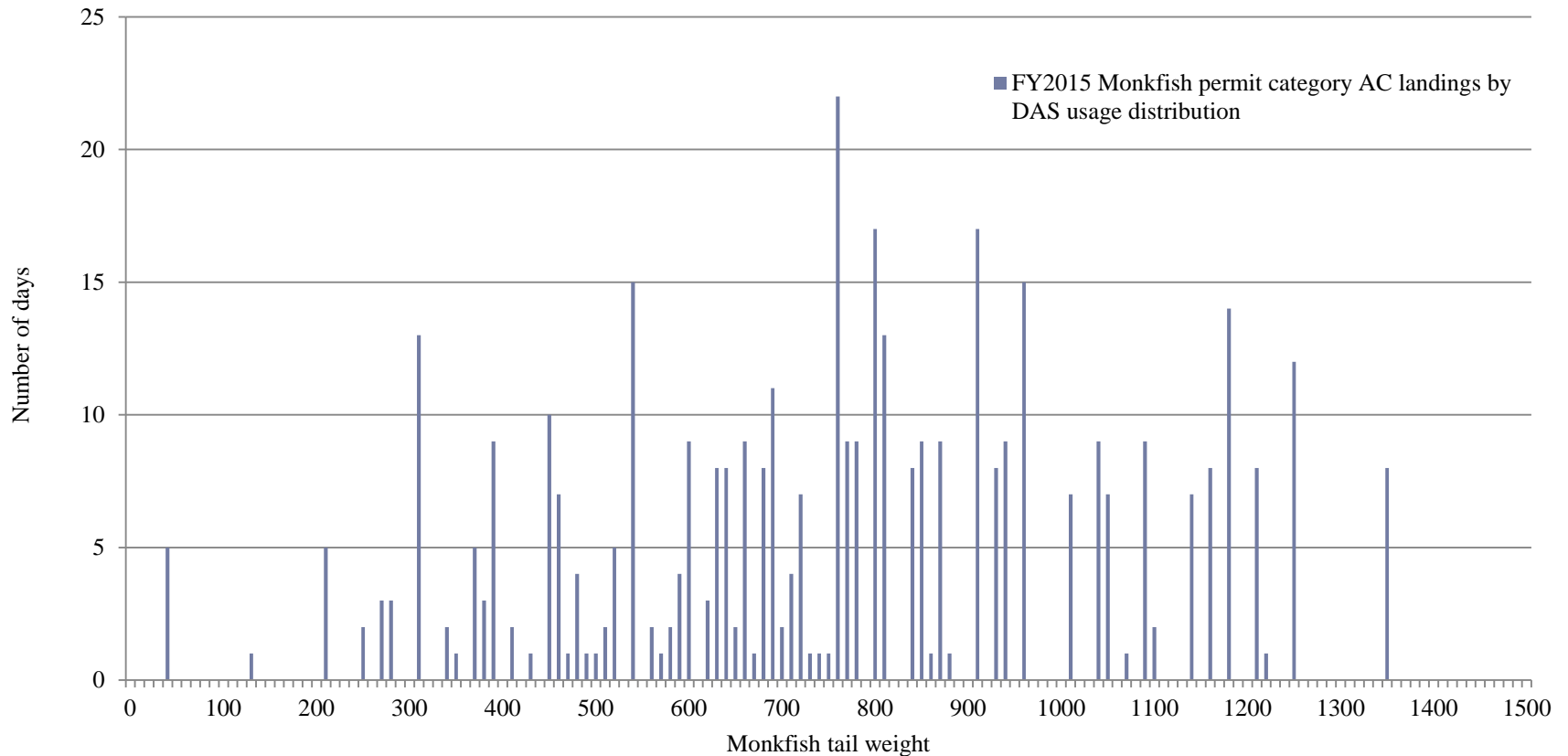


Figure 3. FY2015 Northern Management Area, Monkfish permit category AC observed daily landings by day frequency distribution

# D landing pattern

---

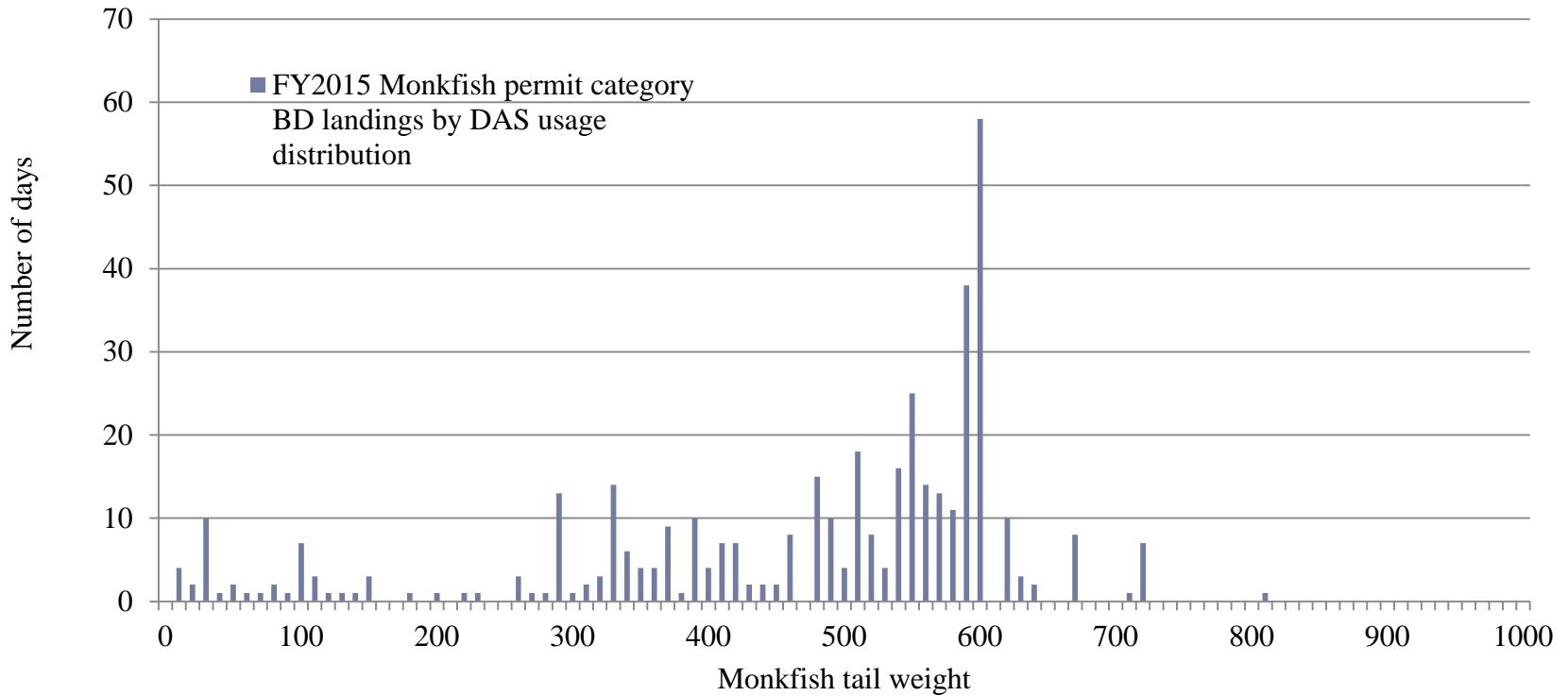


Figure 4. FY2015 Northern Management Area, Monkfish permit category BD observed daily landings by day frequency distribution



## 7.1.1.2 NMFA Effort Controls

---

- ▶ Biological impacts: neutral to low positive
- ▶ EFH: neutral
- ▶ PR: low negative
- ▶ Economic: neutral to low positive





# Modify DAS allocation/trip limit in SFMA

---

- ▶ Option 1: no action
- ▶ Option 2: Increase the DAS allocation
  - ▶ Increase to 37 DAS
- ▶ Option 3: Increase the trip limit
  - ▶ Increase to 700 lb tail weight/DAS for A and C permits
  - ▶ Increase to 575 lb tail weight/DAS for B and D permits
- ▶ Option 4: Increase DAS allocation and trip limits in the SFMA



# SFMA DAS usage

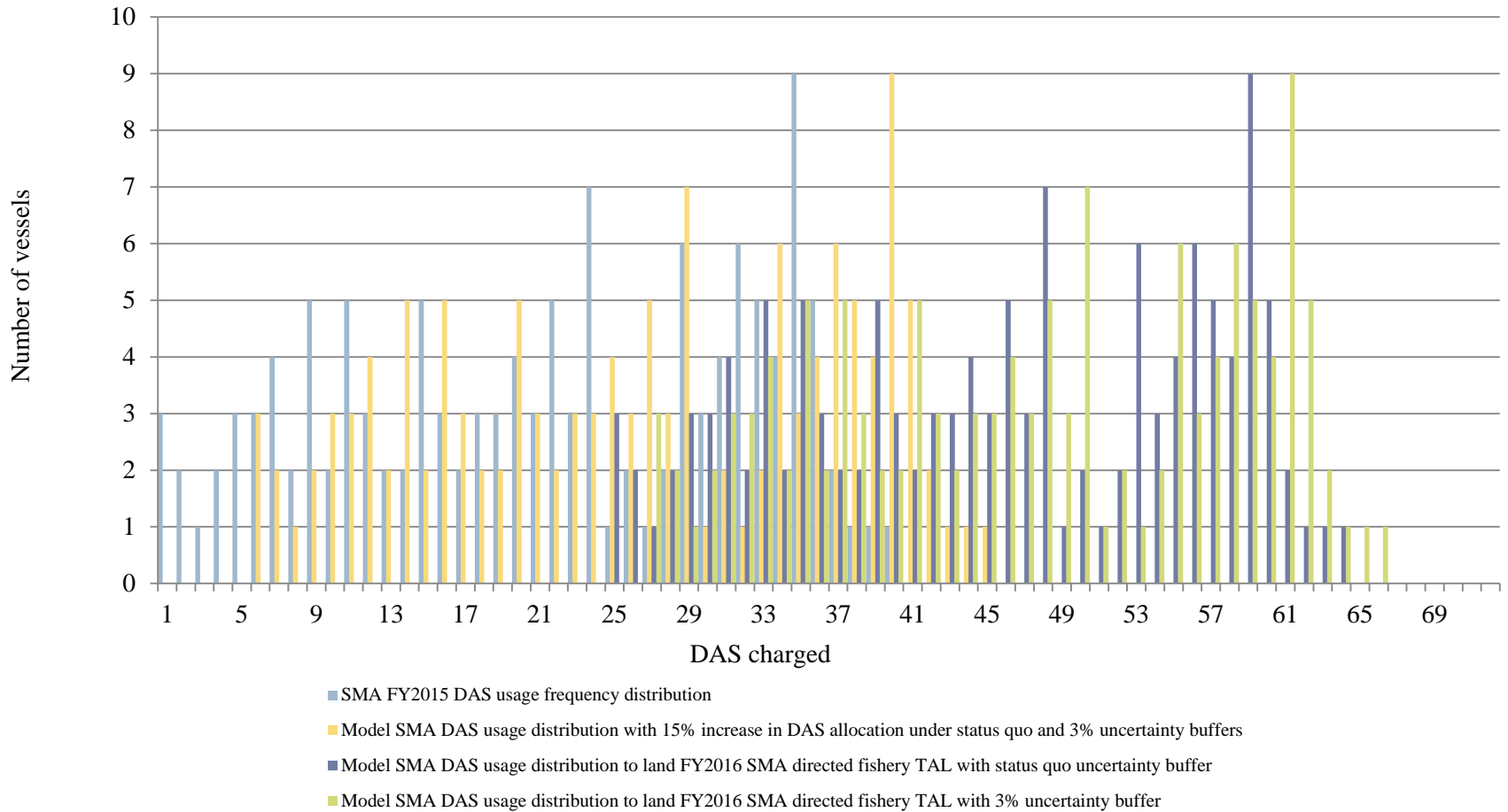


Figure 2. Monkfish Southern Management Area, FY2015 observed and modeled DAS usage frequency distribution with a 15% increase in DAS allocated and under status quo and 3% management uncertainty buffers.

# C landing pattern

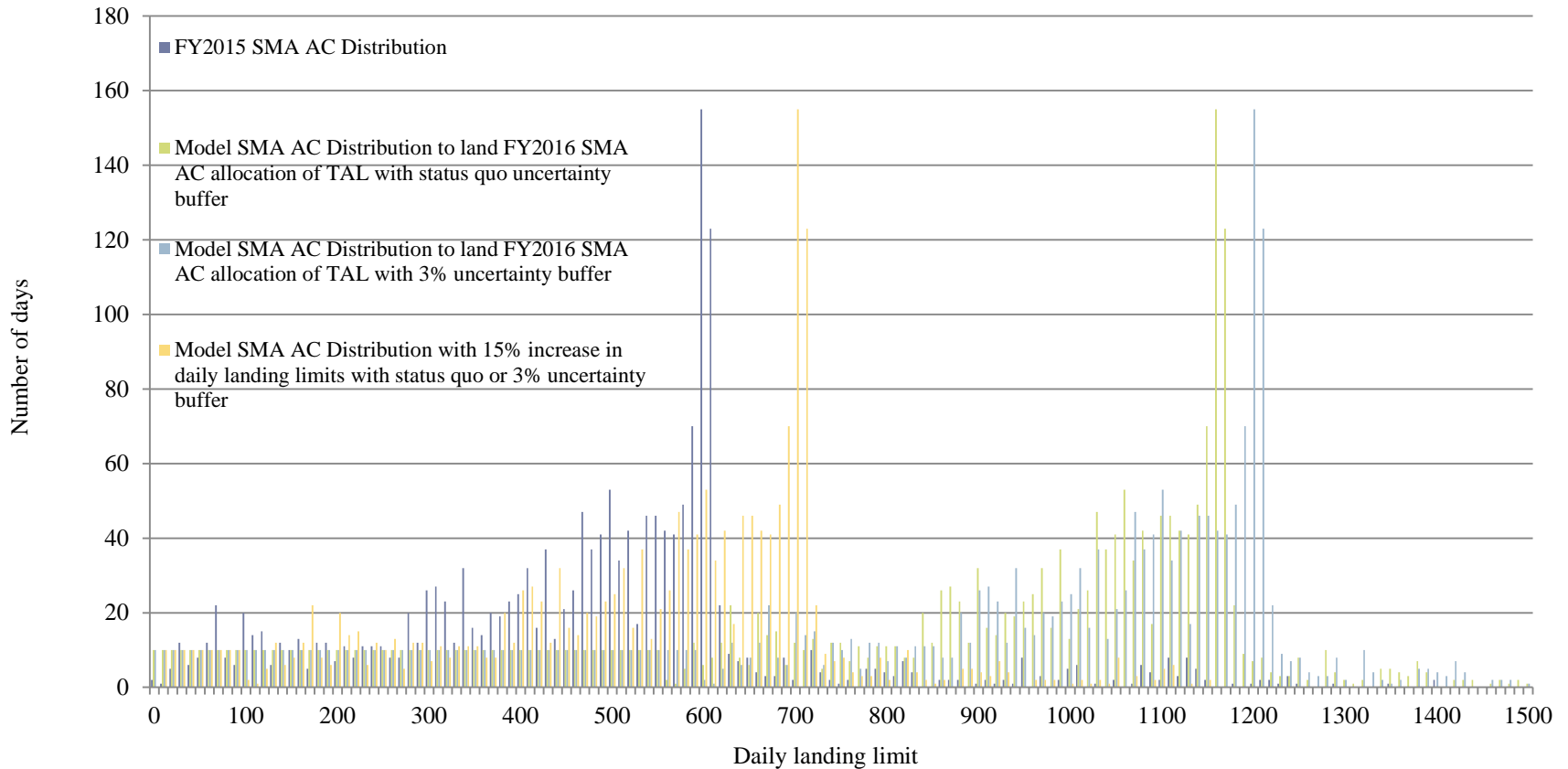


Figure 5. Southern Management Area, Monkfish permit category AC FY2015 observed and modeled daily landings by day frequency distribution

# B, D, H landing pattern

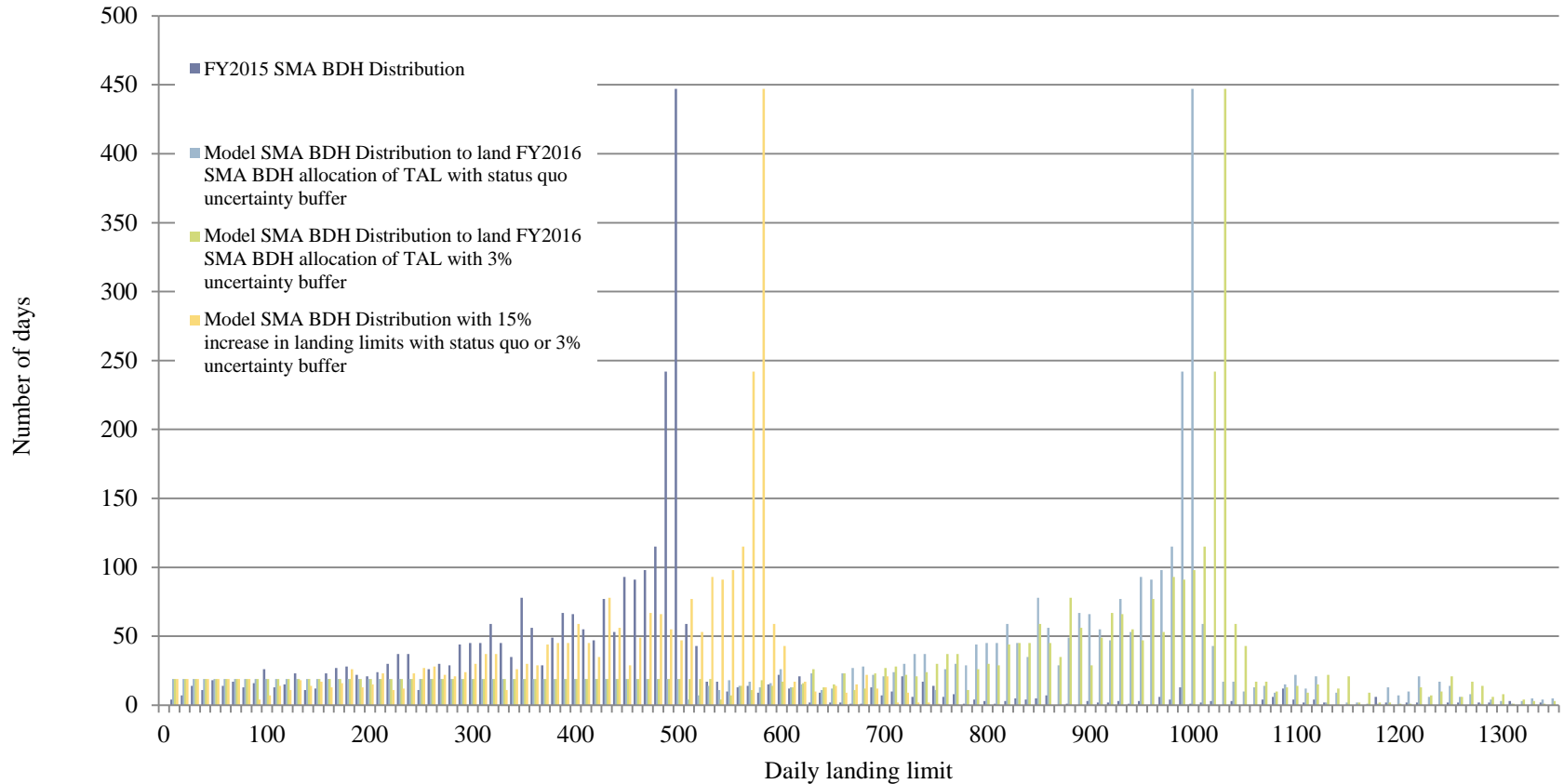


Figure 6. Southern Management Area, Monkfish permit category BDH FY2015 observed and modeled daily landings by day frequency distribution

## 7.1.1.3 SFMA Effort Controls

---

- ▶ Biological impacts: neutral to low positive
- ▶ EFH: neutral
- ▶ PR: low negative
- ▶ Economic: low positive to positive



---

▶ **Questions?**

---

▶