

BOEM Renewable Energy Update to MAFMC

Brian Hooker

BOEM

December 12, 2016

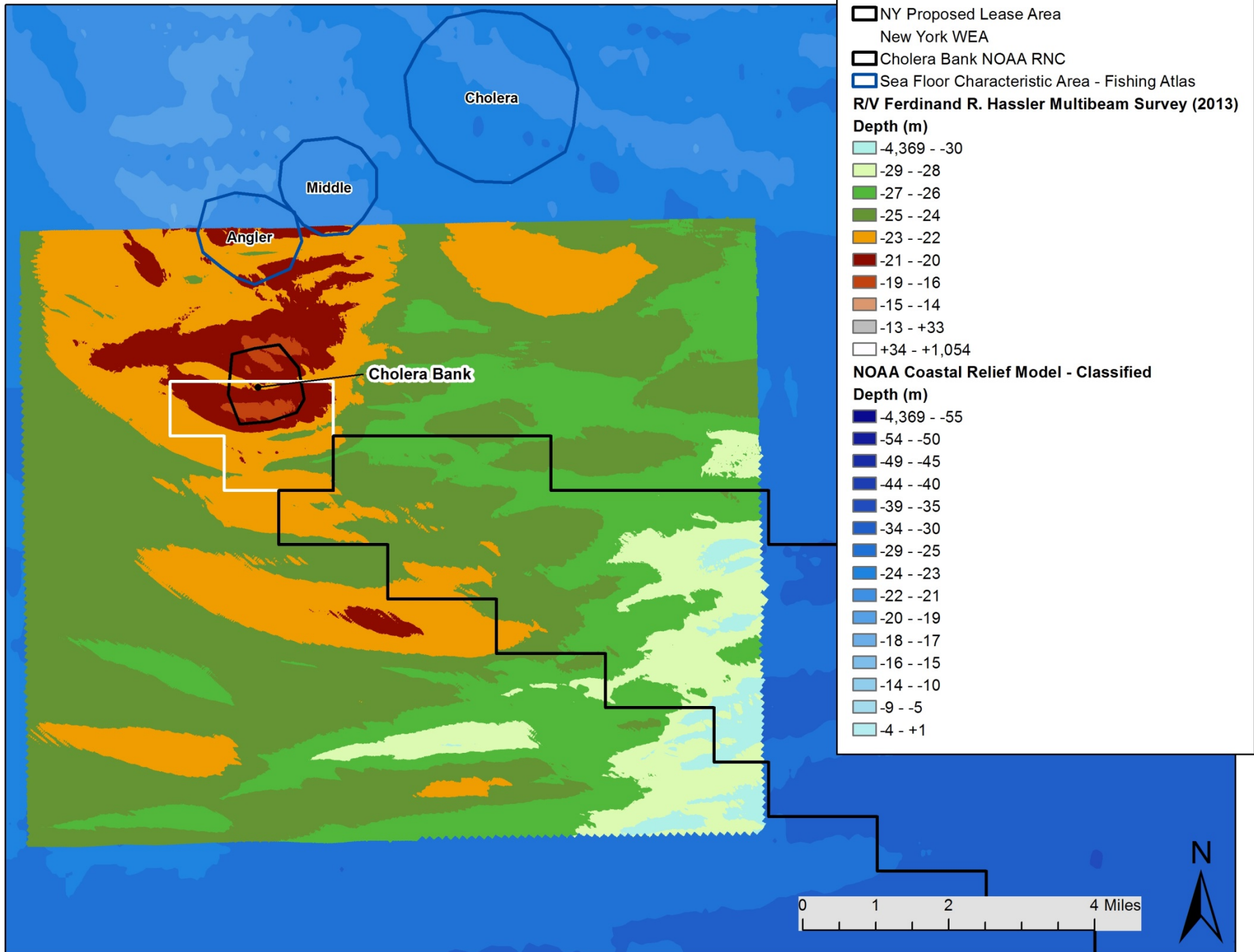


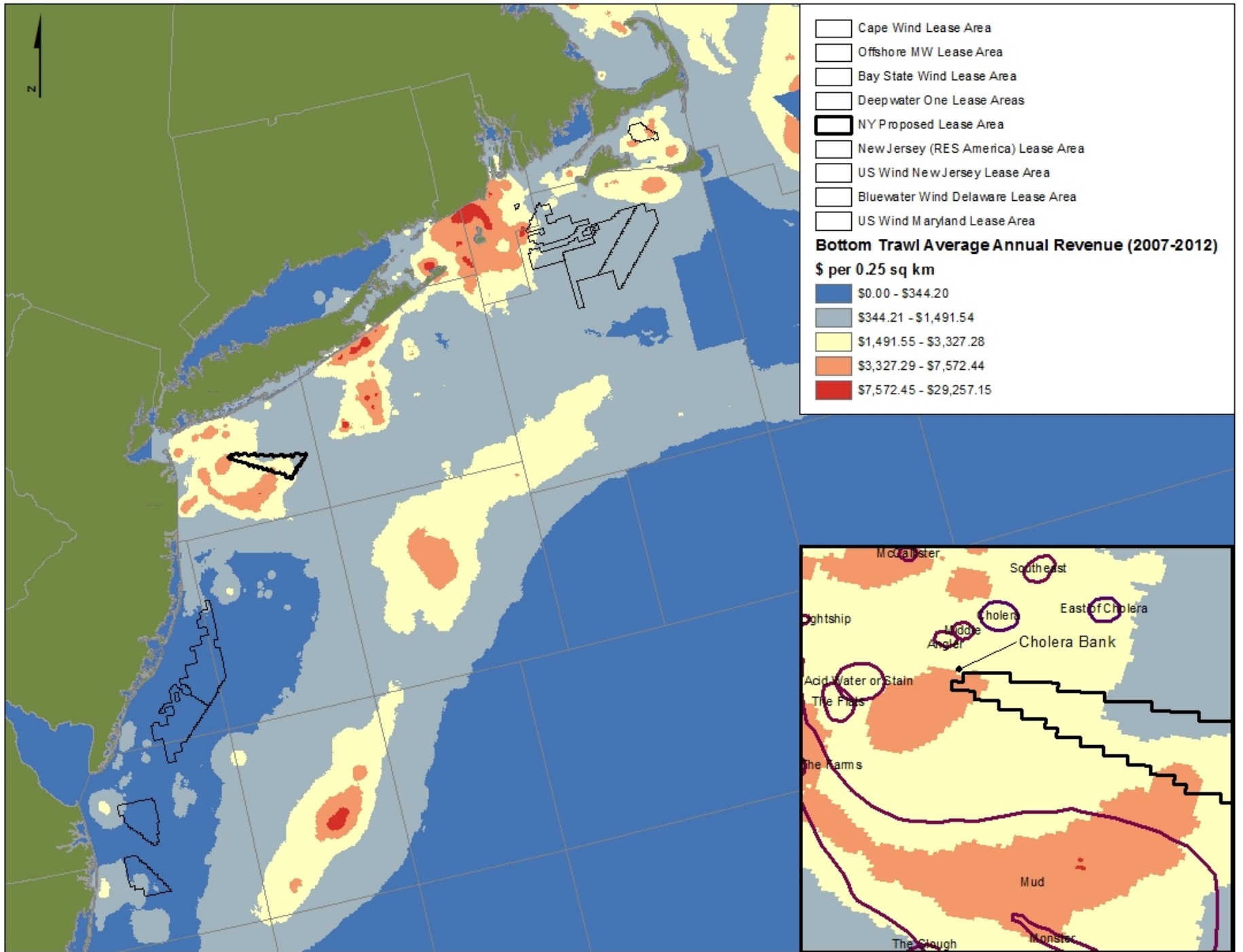
Outline

- Changes to New York WEA Environmental Assessment.
- Changes to New York WEA Lease.
- Next Steps in NY Lease Auction and Lease Execution.
- Lease Milestones.
- Update on Environmental Studies.

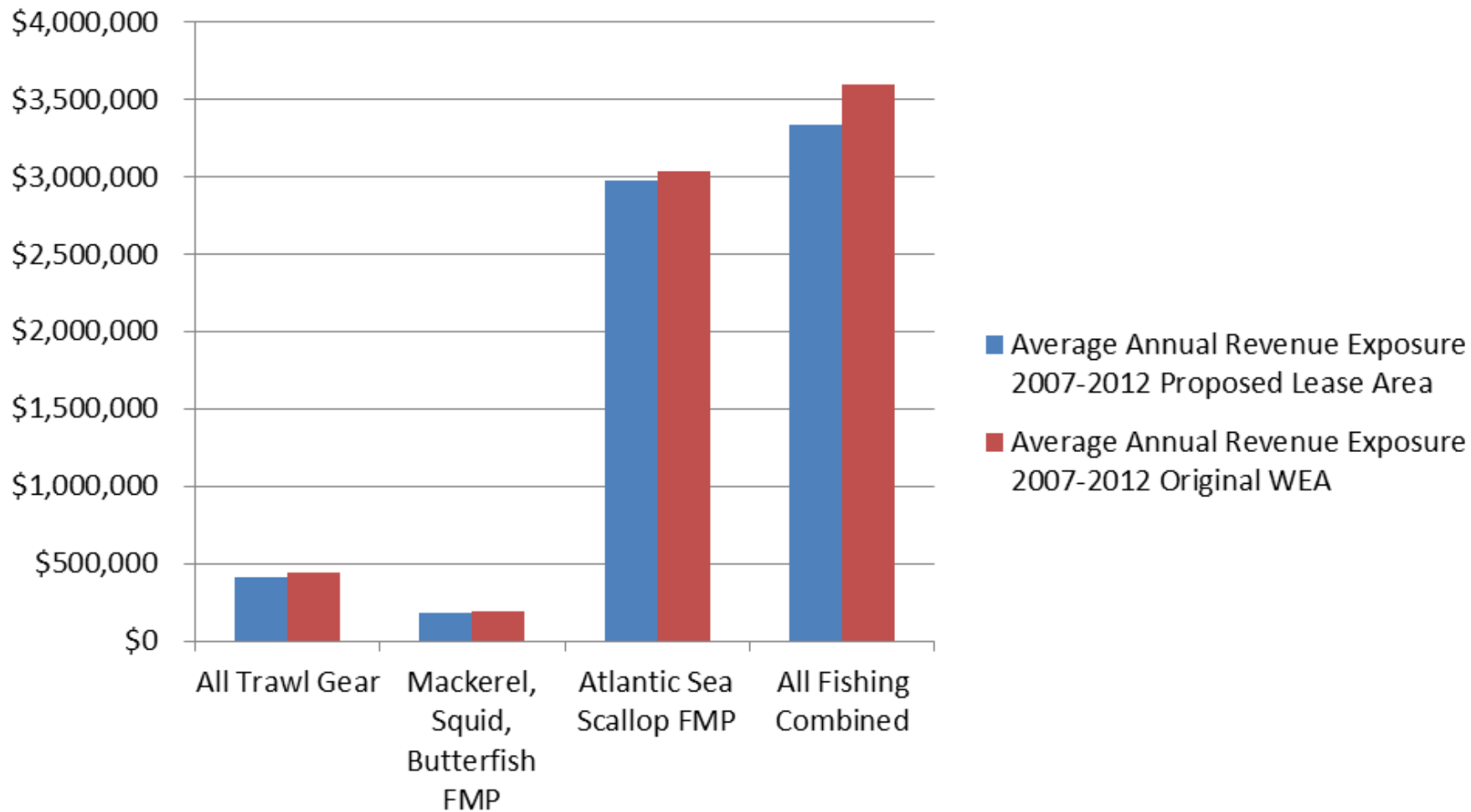
Changes to NY Environmental Assessment

- Removal of 5 aliquots (1,780 acres) from lease consideration.
 - Based upon sensitive fish habitat concerns raised by NMFS.
 - Reduced fisheries exposure by approximately 7%.
- Updated NMFS fisheries revenue data through 2014 (new Appendix G).

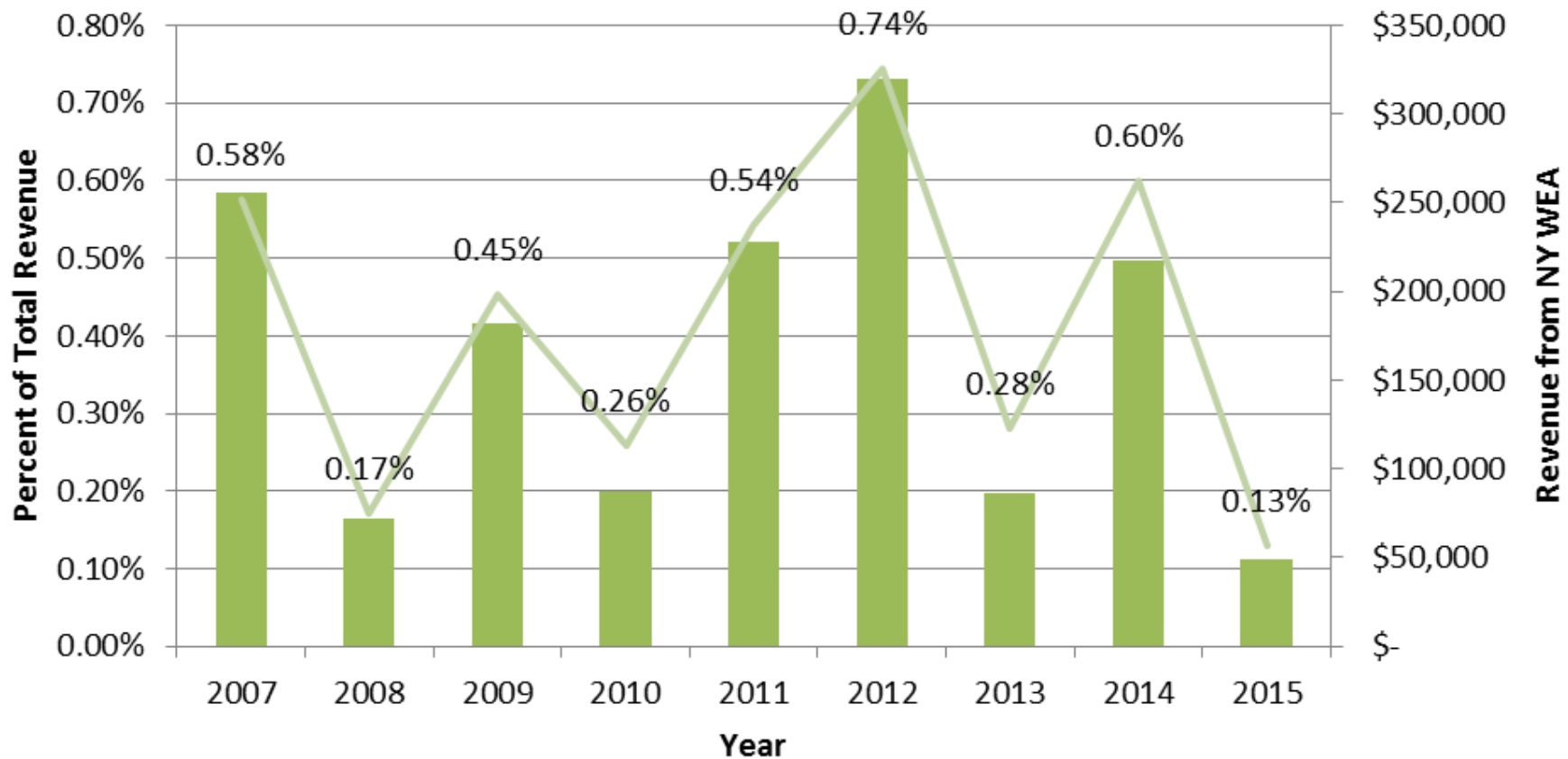




NY WEA and NY Lease Area Average Annual Revenue Exposure 2007-2012



Squid Fishing Revenue from New York Wind Energy Area 2007- 2015



Changes to NY Lease

- Addendum C Stipulation 4.1.5 states:

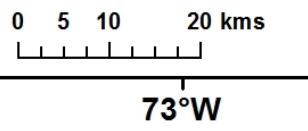
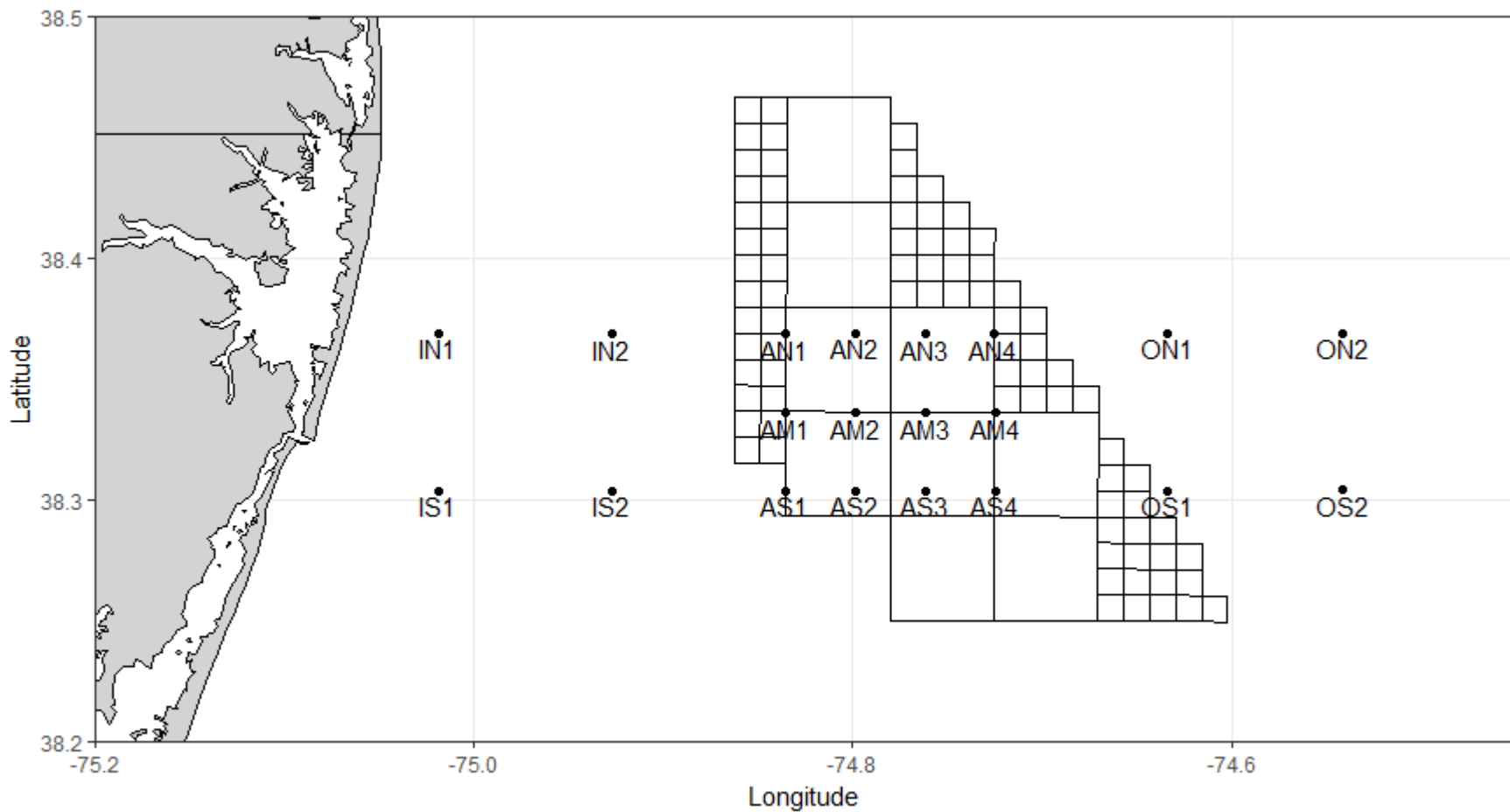
Fisheries Communications Plan (FCP) and Fisheries Liaison. The Lessee must develop a publicly available FCP that describes the strategies that the Lessee intends to use for communicating with fisheries stakeholders prior to and during activities in support of the submission of a plan. The FCP must include the contact information for an individual retained by the Lessee as its primary point of contact with fisheries stakeholders (i.e., Fisheries Liaison). If the Lessee develops a project website, the FCP must be posted on the Lessee's project website. If the Lessee does not develop a project website, the FCP must be made available to the Lessor and the public upon request.

New York Lease Auction Schedule

- December 13, 2016: BOEM conducts a mock auction with qualified bidders.
- December 15, 2016: Lease auction with qualified bidders.
- December 19, 2016: Auction panel reviews auction results.
- Mid January 2017: Department of Justice and Federal Trade Commission complete anti-trust review of auction.

Lease Milestone Schedule

- Preliminary Term: 1 year (December 2017)
- Site Assessment Term: 5 Years (December 2022)
- Operations Term: 25 Years (December 2041)
- 90 days prior to conducting surveys in the lease area the Lessee must submit a survey plan to BOEM.



Future Fisheries Studies

- Understanding fish auditory thresholds/masking.
- Southern New England Lobster Seasonal Movements.
- Real-time Opportunity for Development Environmental Observations (RODEO).
 - Acoustic environment monitoring
 - Benthic habitat monitoring
- FY 18 Studies will be solicited by the BOEM Environmental Studies Program soon.

Thank You!



<http://www.boem.gov/Atlantic-Fishing-Industry-Communication-and-Engagement/>