



Draft Addendum XXVIII for Summer Flounder Recreational Management in 2017: Board Review

Joint ASMFC/MAFMC Meeting

December 14, 2016

Presentation Outline



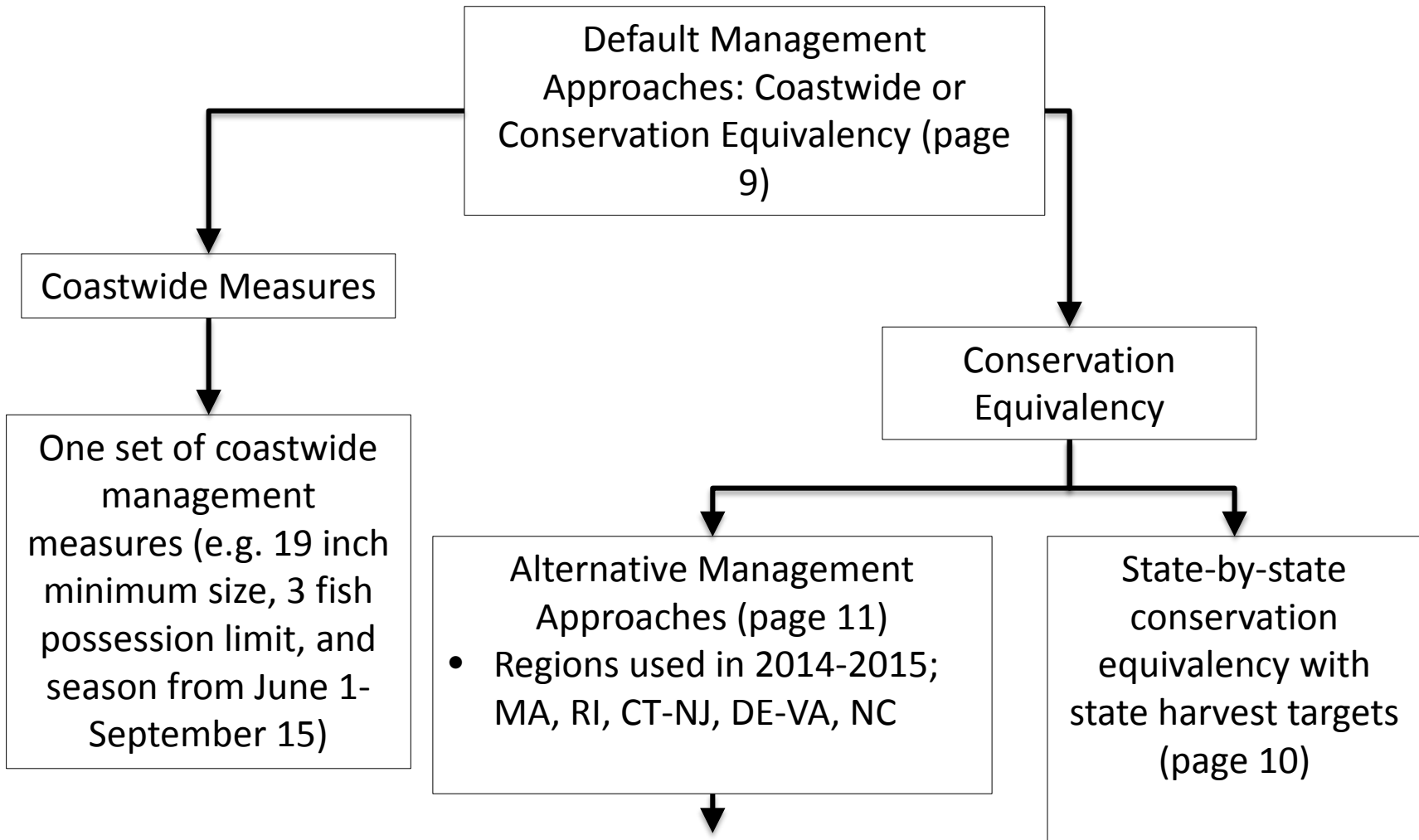
- Document Structure
 - Decision Tree/Management Options
- Key considerations
- Next steps
 - Timetable in 2017
- Questions

Document Structure

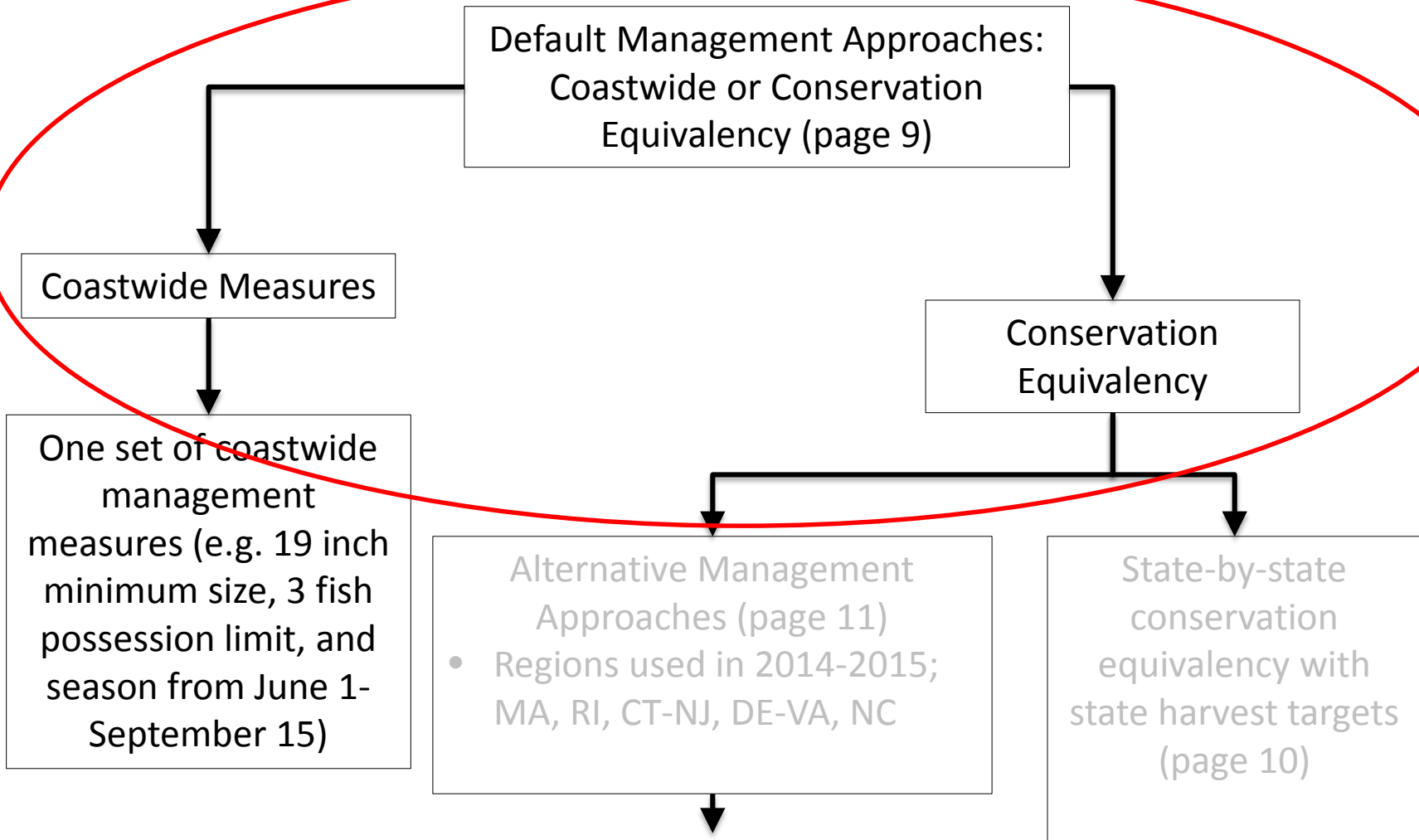


- Introduction
- Overview
 - Statement of the Problem
 - Background
 - Description of the fishery
 - Status of the Stock
- Proposed Management Program
 - Options
 - Timeframe for Summer Flounder Measures

Decision Tree for Draft Addendum XXVIII



Decision Tree for Draft Addendum XXVIII



Default Approaches



- Coastwide Management Measures
 - For 2017: 19 inch minimum size, 3 fish possession limit, and season from June 1-September 15

OR

- Conservation Equivalency
 - State-by-state allocations
 - NOTE: based on preliminary data, subject to change

Preliminary 2017 State-by-State Allocations



STATE	2016 Projected Harvest	Preliminary 2017 Allocation of the RHL based on 1998 harvest	Liberalization (+) or Reduction (-) (in Bold)	Ex. Size Limit	Ex. Bag Limit	Ex. Season (# of days)
MA*	63,834	68,102	+7%			
RI	92,309	70,579	-24%	18"	4 fish	105
CT	239,689	45,814	-81%	21"	2 fish	53
NY	812,624	217,928	-73%	21"	2 fish	66
NJ	656,373	484,146	-26%	18"	3 fish	81
DE	95,984	38,385	-60%	19"	4 fish	365
MD*	19,263	37,147	+93%			
VA*	89,359	206,784	+131%			
NC*	13,542	69,341	+412%			



Precautionary Default Measures

- If a state or region doesn't implement measures to address the reduction the Board agrees to- precautionary default measures would be applied to that state or region
- Monitoring Committee recommended
Precautionary Default measures: 20 inch, 2 fish possession limit, open season of July 1-August 31

Alternative Management Approaches



- **Option 1:** Fish Sharing
- **Option 2:** One-Inch Size Increase as an Minimum Reduction
- **Option 3:** 30% Reduction as a Minimum requirement
- **Option 4:** One-Inch Size Increase and 30% Reductions as Minimum requirement

Important Points



- State & Regional Reductions based on data through Wave 4- will likely change for all options
- EXAMPLE Measures developed based on preliminary MRIP harvest estimates through Wave 4- subject to change after Wave 5 is released
 - ***Will need states/regions to provide updated measures **ASAP** once Wave 5 data is available***
- 2017 RHL: 3.77 million lb
- Current 2018 RHL: 4.42 million lb
- Both years are a reduction from 2016 RHL

Alternative Approaches- Option 1



STATE	2016 Projected Harvest	2017 Harvest Target	Reduction (in Bold)	Example Size Limit	Example Possession Limit	Example Season (# of days)
MA	63,834	63,834	0%	16"	5 fish	132
RI	92,309	82,460	-11%	18"	4 fish	117
CT	1,708,687	873,784	-49%	19"	2 fish	88
NY						
NJ						
DE	204,606	204,606	0%	16"	4 fish	365
MD						
VA						
NC	13,542	13,542	0%	15"	6 fish	365

Alternative Approaches- Option 2



STATE	2016 Projected Harvest	2017 Harvest Target	Reduction (in Bold)	Example Size Limit	Example Possession Limit	Example Season (# of days)
MA	63,834	46,599	-26.9%	17"	5 fish	132
RI	92,309	82,460	-11%	19"	8 fish	245
CT	1,708,687	873,784	-49%	19"	2 fish	101
NY						
NJ						
DE	204,606	149,363	-26.9%	17"	4 fish	365
MD						
VA						
NC	13,542	10,834	-20%	16"	6 fish	365

Alternative Approaches- Option 3



STATE	2016 Projected Harvest	2017 Harvest Target	Reduction (in Bold)	Example Size Limit	Example Possession Limit	Example Season (# of days)
MA	63,834	44,684	-30.0%	17"	4 fish	132
RI	92,309	53,348	-42.2%	18"	4 fish	88
CT NY NJ	1,708,687	987,491	-42.2%	19"	2 fish	107
DE MD VA	204,606	143,224	-30.0%	17"	4 fish	352*
NC	13,542	9,480	-30.0%	16	6 fish	350

Alternative Approaches- Option 4



STATE	2016 Projected Harvest	2017 Harvest Target	Reduction (in Bold)	Example Size Limit	Example Possession Limit	Example Season (# of days)
MA	63,834	44,684	-30.0%	17"	4 fish	132
RI	92,309	53,348	-42.2%	19"	4 fish	114
CT	1,708,687	987,491	-42.2%	19"	2 fish	107
NY						
NJ						
DE	204,606	143,224	-30.0%	17"	4 fish	345*
MD						
VA						
NC	13,542	9,480	-30.0%	16"	6 fish	350



Timeframe

3 currently listed options in document (section 3.1.1)

- For 2017 only
- For 2017 and 2018



Things to consider & discuss today

- Ensure options are clear and lay out process beyond 2017
- Provide feedback on the timeframe options
- Any additional information needed in the document (language, graphs, tables, etc.)

Timetable moving forward



- December 2016
 - Draft Addendum released for Public Comment
 - Public Comment for 30 days
- January 2017
 - Public Hearings and Public Comments
- February 2017
 - Present Public Comment to Board at ASMFC Winter Meeting
 - Board considers final action on Draft Addendum

Timetable moving forward cont'



- February-April 2017
 - States implement management program from Addendum XXVIII
 - Submit final measures to ASMFC staff by **March 1, 2017**

If state or region does not implement management program provisions from Addendum XXVIII....

- State or region must implement precautionary default measures
- If state or region does not implement either Addendum XXVIII provisions or precautionary default measures, state can be found out of compliance by the Commission

Next Steps



- Consider the document for public comment
- *****States/Regions need to provide updated measures for each option (state by state allocation AND Options 1-4) ASAP once Wave 5 data is available*****



Questions?



2017 Management Process for Scup and Black Sea Bass

Current FMP Options for Scup



Scup

- Coastwide measures (in both state and federal waters)

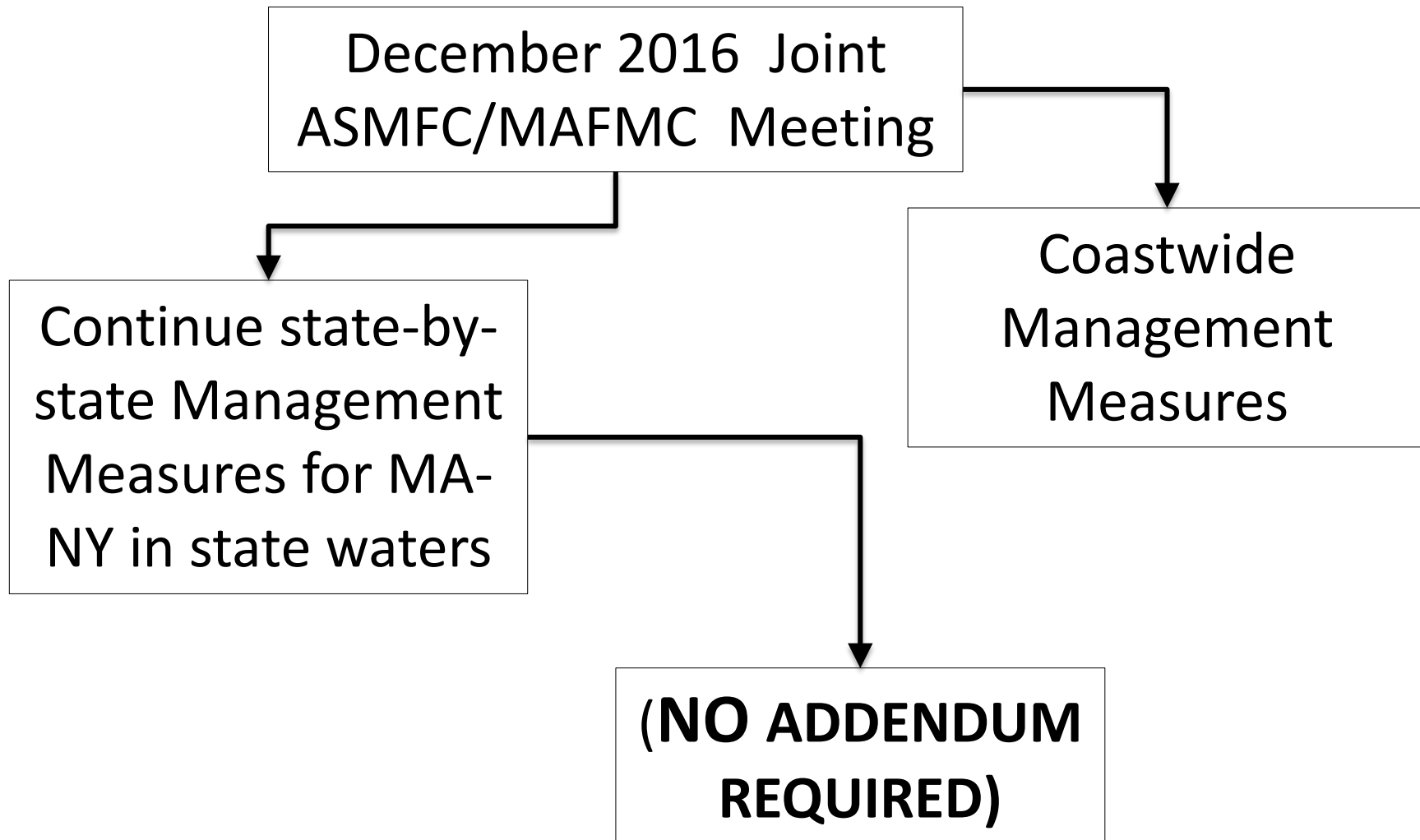
or

- Addendum XI (2004)
 - Ad-Hoc region of MA-NY

2017 Scup Management



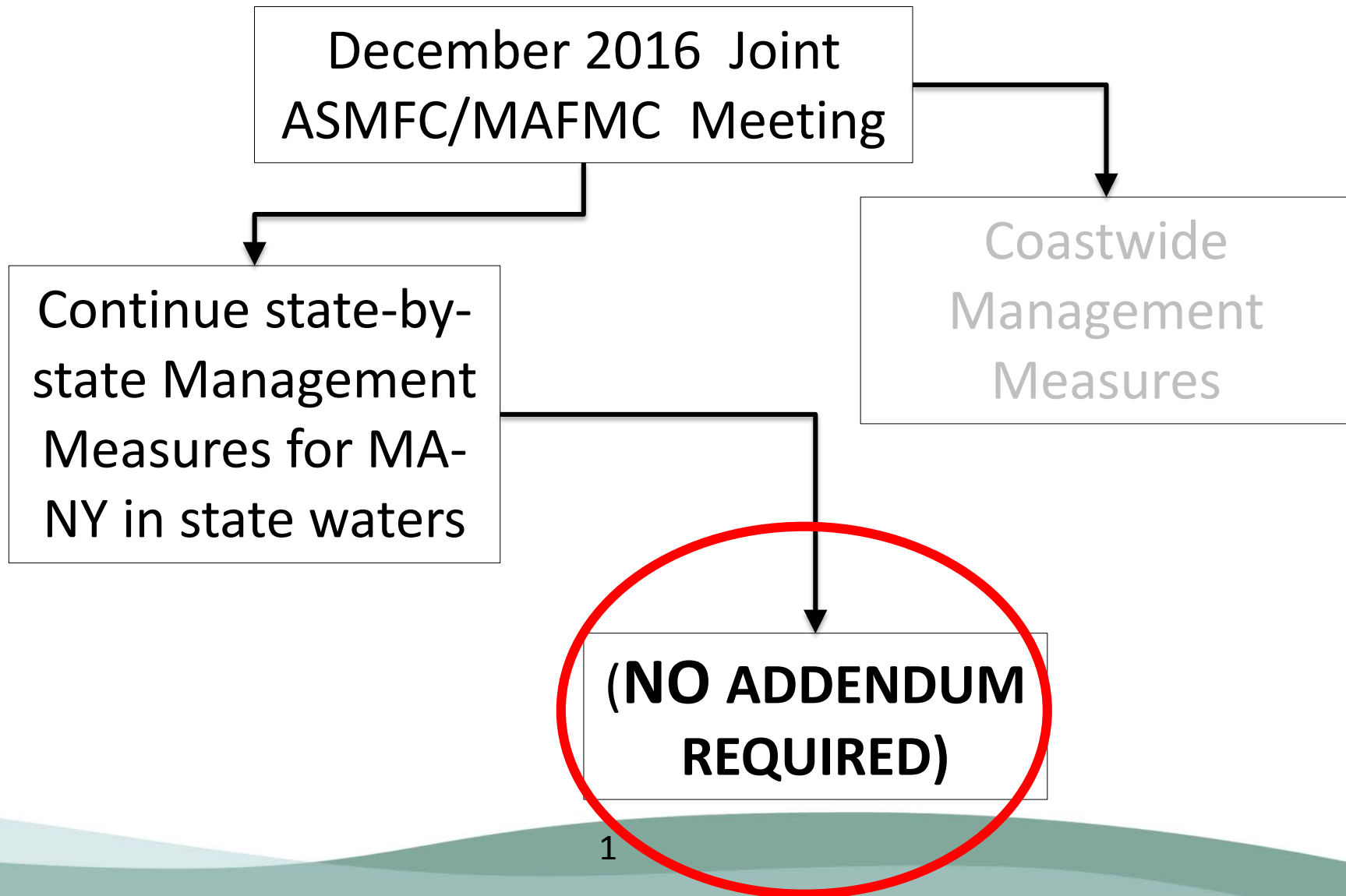
Annual Decision Tree



2017 Scup Management



Annual Decision Tree



Timetable moving forward: Scup



- December 2016
 - Board and Council set Federal Management Measures
 - Board continues regional approach (MOTION NEEDED)
- December 2016-January 2017
 - TC Members from MA-NY develop proposals to achieve needed reduction
 - DUE to ASMFC STAFF: **COB Monday January 9th**
 - TC conference call week of Jan 9th
 - TC conference call summary and proposals added to ASMFC Winter meeting materials
- February 2017
 - Present Proposals to Board at ASMFC Winter Meeting
 - Board considers methodology used and approval of proposals

Timetable moving forward: Scup cont'd



- February-April 2017
 - States implement measures through state process
 - Submit final measures to ASMFC staff by **March 1, 2017**

Current FMP Options for Black Sea Bass



Black Sea Bass

- Coastwide measures (in both state and federal waters)

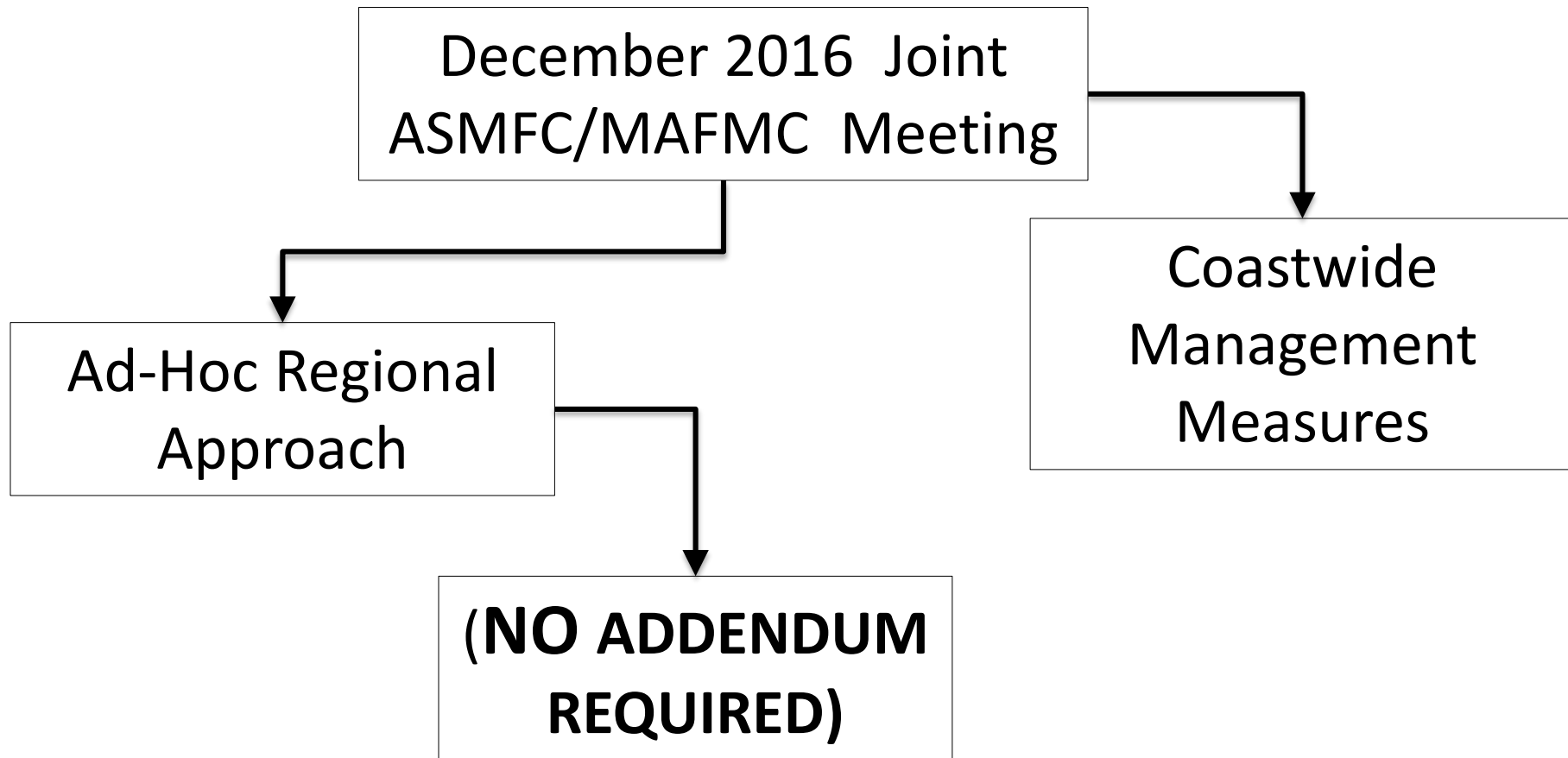
or

- Addendum XXVII (2016)
 - Ad-Hoc regional management can be extended to 2017

2017 Black Sea Bass Management



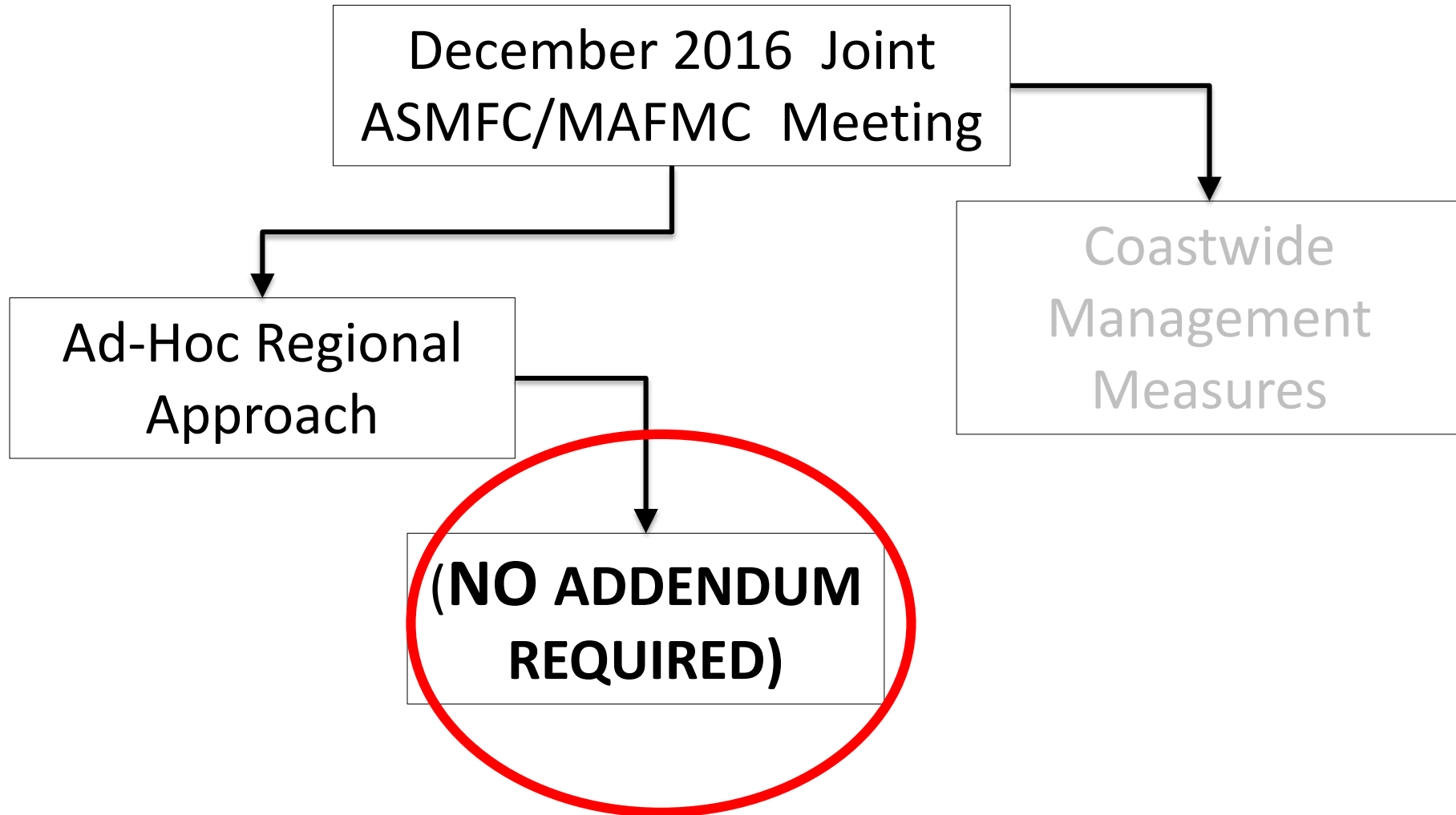
Annual Decision Tree



2017 Black Sea Bass Management



Annual Decision Tree



Timetable moving forward:



Black Sea Bass

- December 2016
 - Board and Council set Federal Management Measures
 - Board continues ad-hoc regional approach under Addendum XXVII (MOTION NEEDED TO CONTINUE AD-HOC APPROACH in 2017)
- January 2017
 - 2016 measures in place for 2017 (initially)
 - SSC Meets on January 25th
 - TC Members from MA-NJ develop proposals to achieve 2017 RHL (from ABC established by SSC)
 - DUE to ASMFC STAFF: **COB Monday February 6th**
- February 2017
 - Present Proposals for updated 2017 measures to Board & Council at Joint Meeting
 - Board considers methodology used and approval of proposals

Timetable moving forward:



Black Sea Bass cont'd

- February-April 2017
 - States implement measures through state process
 - Submit final measures to ASMFC staff by **May 1, 2017**
- If state or region does not implement either Addendum XXVIII provisions, states can be found out of compliance by the Commission



Questions?



Summer Flounder WG Participants

- Mike Luisi
- Rob O'Reilly
- Bob Ballou
- Adam Nowalsky
- Nichola Meserve
- John Maniscalco
- Rich Wong
- Steve Heins

Call Summary



Key Points:

- 30% reduction in the 2017 Summer Flounder RHL compared to the 2016.
 - Board & Council voted to reduce the 2017 RHL in response to findings of the 2016 Summer Flounder Stock Assessment Update in August 2016.
- Based on preliminary 2016 harvest data through wave 4, coastwide reduction of 41% for the 2017
- The group indicated that options 4 (Regional Allocations with ‘fish-sharing’) and option 6 (regional allocation with minimum 30% reduction) seem worth focusing on.

Call Summary Cont'd



Additional Comments:

- Concern that 'fish-sharing' can be arbitrary
- 'Guiding principle'- measures should achieve the needed reduction without being 'extreme' (super high size limit, low bag limit, and little-to-no season).
- Recent fishing performance should be taken into consideration.
 - underperformance of 2016 harvest targets in certain states to modify (down) their 30% minimum reductions.
- New Jersey-Delaware Bay specific management measures & 2016 performance .
 - 2016: during Wave 3 and 4, NJ's Delaware Bay fluke harvest was 0.9% of state's harvest, ~6,000 fish.