



Black Sea Bass



2017 Recreational Measures

December 14, 2016

Baltimore, MD

2017 Rec. Measures Process



Black Sea Bass Assessment



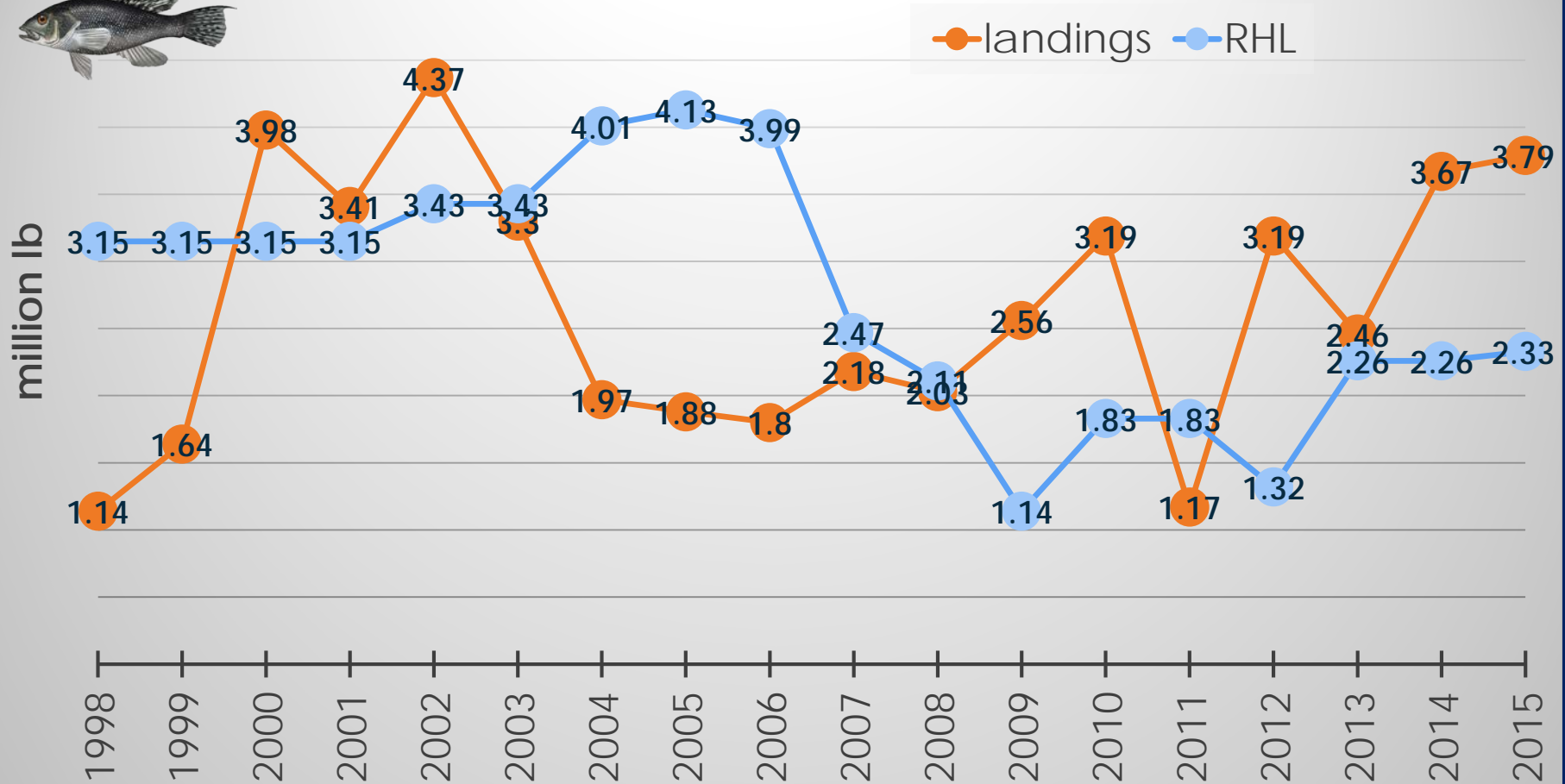
- Peer review conducted: Nov. 29-December 2
- SSC will review assessment results and consider changes to 2017 catch limit in January 2017
- Staff/Monitoring Committee
Recommendation: postpone 2017 recreational measures adjustments until after SSC meets

2015 Fishery Performance



2015 RHL	2.33 mil lb
2015 Landings	3.79 mil lb
% Over/Under	+63%

Harvest Limits and Landings



2016 Federal Measures



12.5-inch minimum size

15 fish possession limit

May 15-September 21 and October 22-
December 31

2016 State Measures



- Since 2011: Commission has approved “ad hoc regional management” in state waters

2016 State Measures (N)



State	Min. Size (in.)	Bag	Open Season
ME	13	10 fish	May 19 - September 21; October 18-December 31
NH	13	10 fish	January 1 - December 31
MA	15	5 fish	May 21-August 31
RI	15	3 fish	June 24-August 31
		7 fish	September 1 - December 31
CT	15	5 fish	May 1-December 31
CT authorized party/charter	15	8 fish	May 1-December 31
NY	15	3 fish	June 27-August 31
		8 fish	September 1-October 31
		10 fish	November 1-December 31
NJ	12.5	10 fish	May 23-June 19
		2 fish	July 1-August 31
	13	15 fish	October 22-December 31

2016 State Measures (S)



State	Min. Size (in.)	Poss. Limit	Open Season
DE	12.5	15 fish	May 15 – September 21 and October 22 – December 31
MD			
PRFC			
VA			
NC (north of Cape Hatteras)			

2016 Projections



2016 RHL	2.82 mil lb
Landings through wave 4, 2016	3.43 mil lb
2016 Proj. Landings*	5.06 mil lb
2017 RHL	2.82 mil lb
2017 Coastwide reduction	44%**

*Projected using % landings by wave in 2015; adjustments for RI, CT, NY, and NJ

**If RHL were not changed for 2017

Accountability Measures



- Per Council's AMs, must account for BSB rec. overages
- Comparison of 3-year average rec. ACL with 3-year average rec. catch

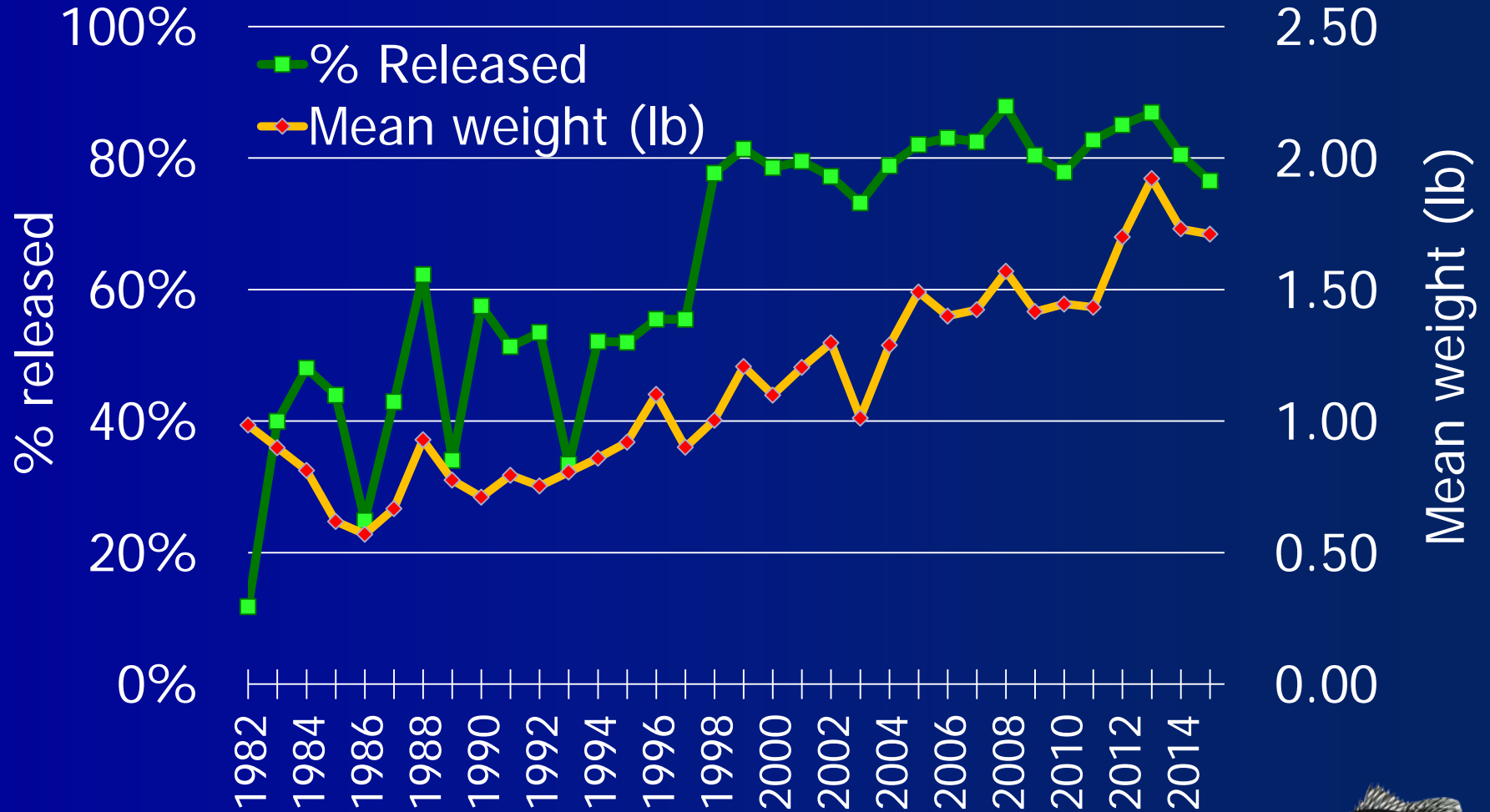
	2013	2014	2015	3-year average
Rec ACL (mil lb)	2.90	2.90	2.90	2.90
Total rec. catch (mil lb)	3.08	4.53	4.71	4.11
<i>Landings</i>	2.46	3.67	3.79	3.31
<i>Discards</i>	0.62	0.86	0.92	0.80
Overage %	6.2%	56.2%	62.4	41.6%
Overage (mil lb)	0.18	1.63	1.81	1.21

Accountability Measures



- [Page 3 in staff memo]
- BSB biomass is above target → adjustments to bag, size, and season as AM
- Monitoring Committee must take into account performance of past measures and conditions that precipitated the overage
- Consider continuing to update data & methodology used to calculate reductions

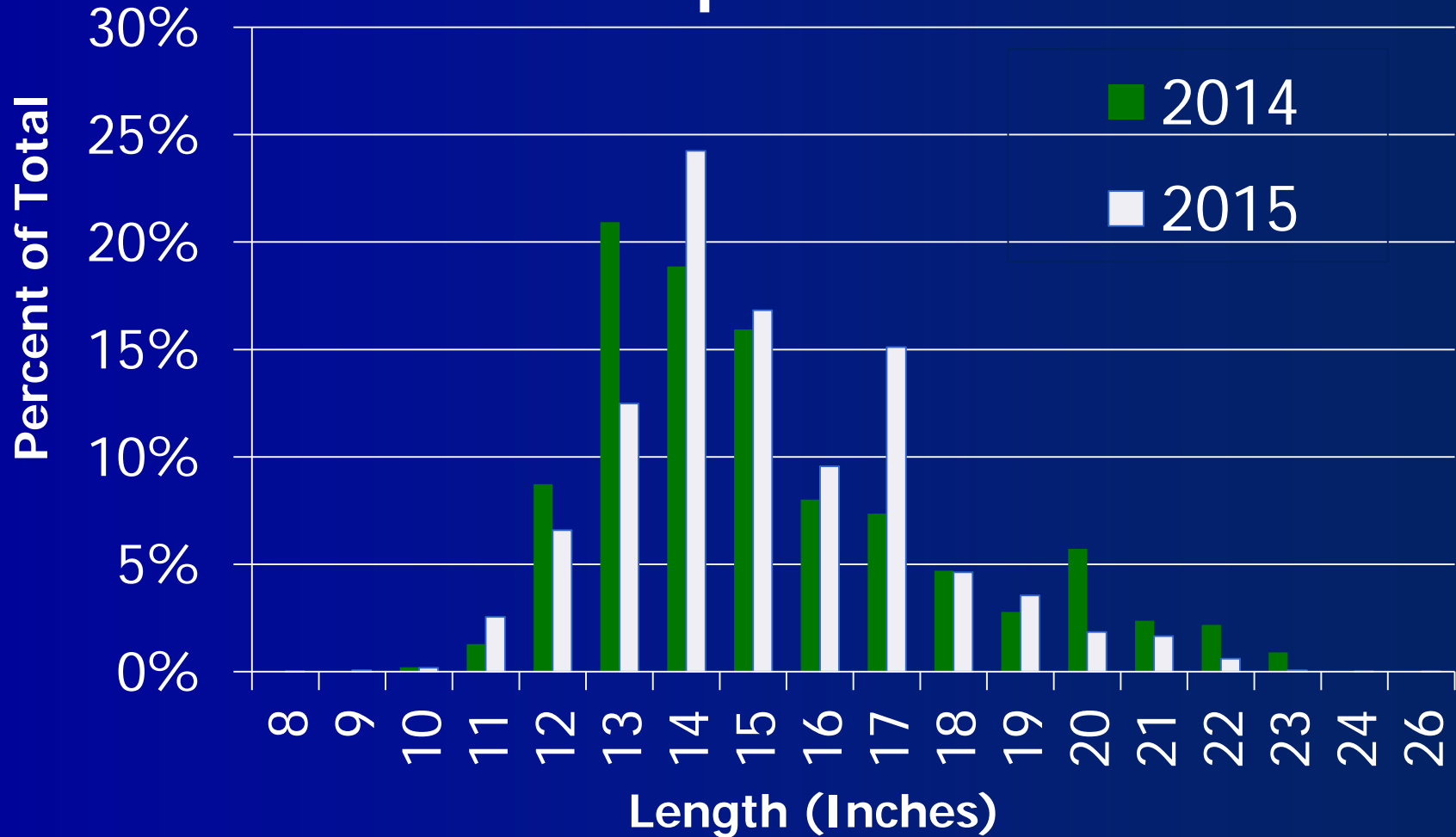
Mean Weight and Percent Released



Length Frequencies (N)



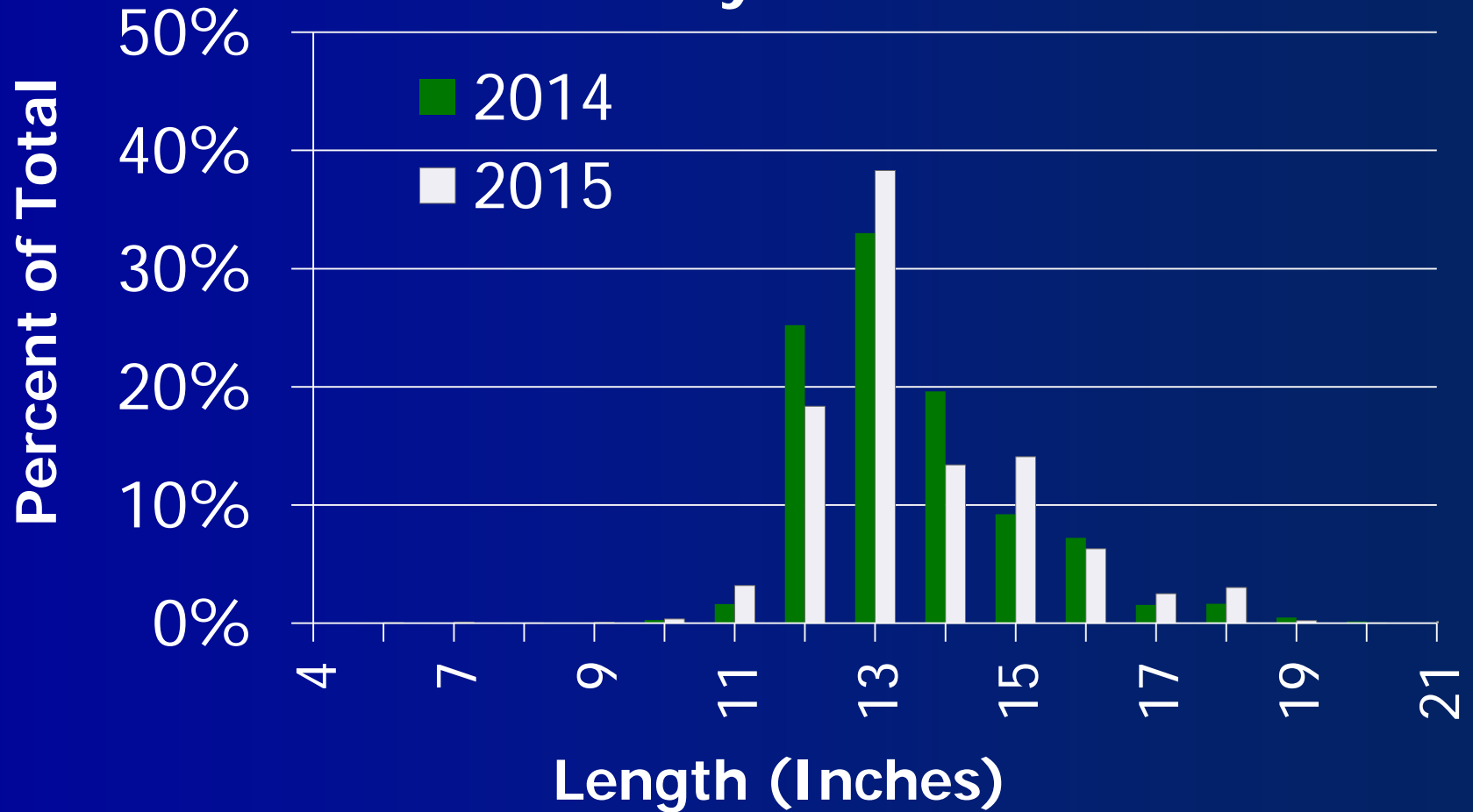
New Hampshire-New York



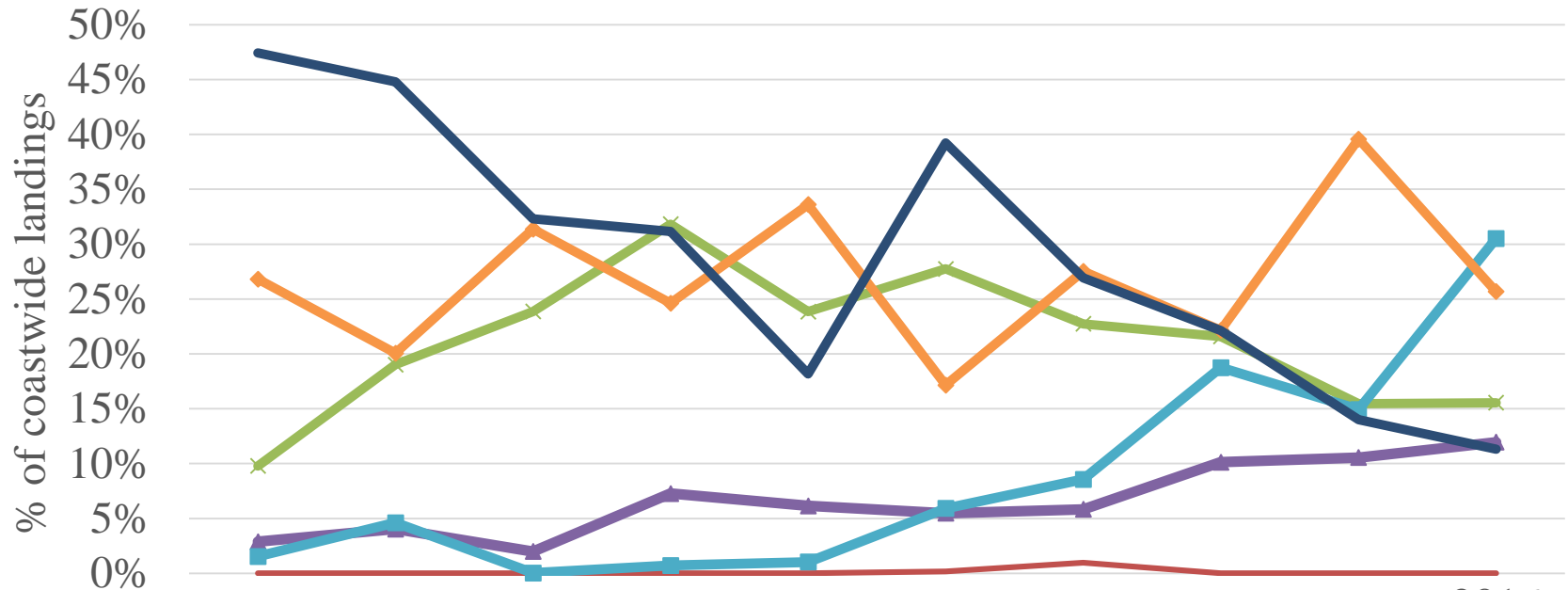
Length Frequencies (S)



New Jersey-North Carolina

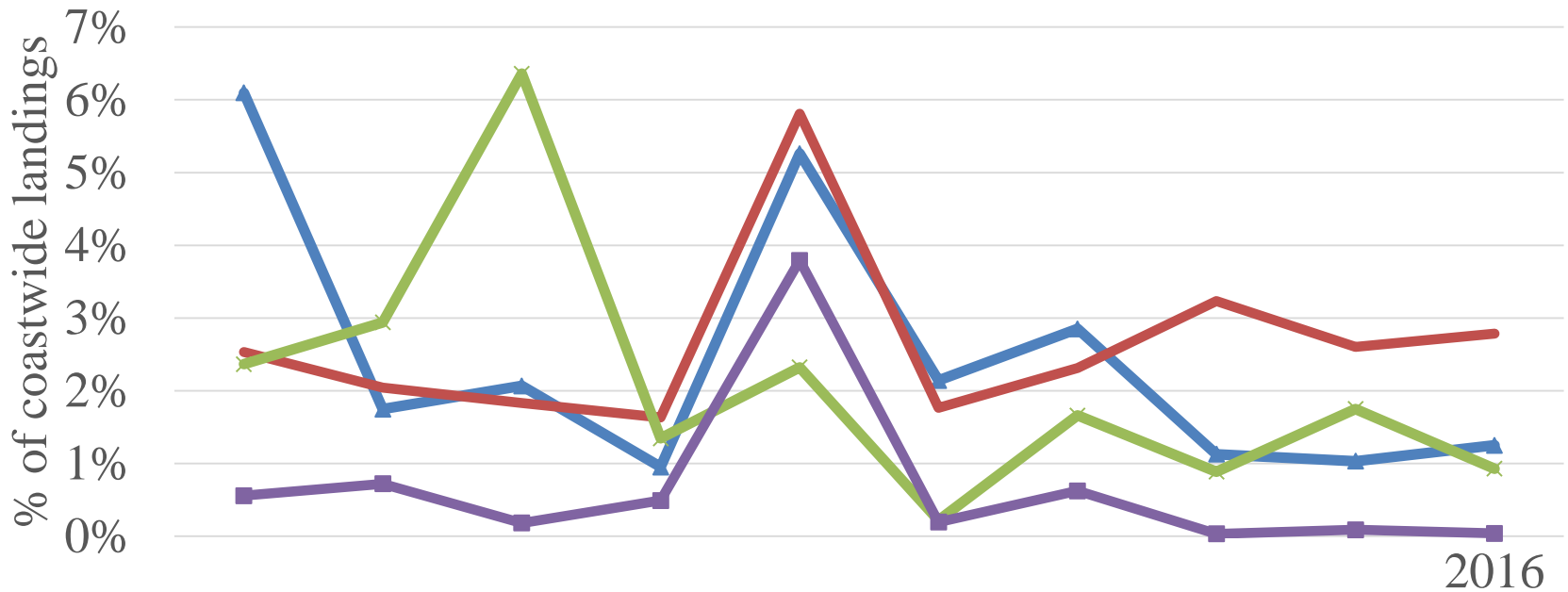


New Hampshire-New Jersey



	2007	2008	2009	2010	2011	2012	2013	2014	2015	2016 (proj.)
— NH	0.0%	0.0%	0.0%	0.0%	0.0%	0.2%	1.0%	0.0%	0.0%	0.0%
— MA	9.8%	19.0%	23.9%	31.8%	23.8%	27.7%	22.7%	21.6%	15.5%	15.5%
— RI	2.9%	4.0%	2.0%	7.3%	6.1%	5.5%	5.8%	10.1%	10.5%	11.9%
— CT	1.5%	4.6%	0.0%	0.7%	1.0%	5.9%	8.6%	18.7%	14.9%	30.5%
— NY	26.8%	20.1%	31.4%	24.6%	33.6%	17.2%	27.5%	22.2%	39.6%	25.7%
— NJ	47.4%	44.8%	32.3%	31.2%	18.2%	39.2%	26.9%	22.1%	14.0%	11.3%

Delaware-North Carolina



2016
(proj.)

—▲— DE	6.1%	1.7%	2.1%	1.0%	5.3%	2.1%	2.9%	1.1%	1.0%	1.3%
—●— MD	2.5%	2.0%	1.8%	1.6%	5.8%	1.8%	2.3%	3.2%	2.6%	2.8%
—×— VA	2.4%	2.9%	6.4%	1.3%	2.3%	0.2%	1.7%	0.9%	1.8%	0.9%
—■— NC	0.6%	0.7%	0.2%	0.5%	3.8%	0.2%	0.6%	0.0%	0.1%	0.0%

Staff Recommendation



- Given assessment timing, postpone adjustments until after SSC consideration of assessment
- Begin planning now for how to address changes quickly and efficiently in early 2017

Monitoring Committee Recommendation

- Agrees with staff rec. to postpone development of measures until early 2017
- Accountability measures will also have to be addressed at that time
- Complicated timing: measures may be finalized after season begins in 2017

Advisory Panel Comments



- Many comments that MRIP estimates are inaccurate and unreliable
- Concern and frustration with precision and low sample size issues, as well as general reliance on MRIP for adjustments to rec. measures

Advisory Panel Comments



- Council, Commission, and states should make changes ASAP (some state processes take longer)
- One request for NJ to be separate from other “northern” states under ad hoc regional management
- One suggestion that bag limit only with no minimum size would reduce discard mortality

Advisory Panel Comments



- One request to allow anglers to transit through federal waters near Block Island when in possession of fish legally caught in state waters
- One request for prohibiting all discards of black sea bass and requiring barbless hooks

Summary



- Postpone rec. measures adjustments until SSC reviews new assessment information
- Council/Board will consider SSC recs. for catch limits in February 2017
- Rec. measures timing TBD; ideally similar timeline to catch limit reconsideration

Current FMP Options for Black Sea Bass



Black Sea Bass

- Coastwide measures (in both state and federal waters)

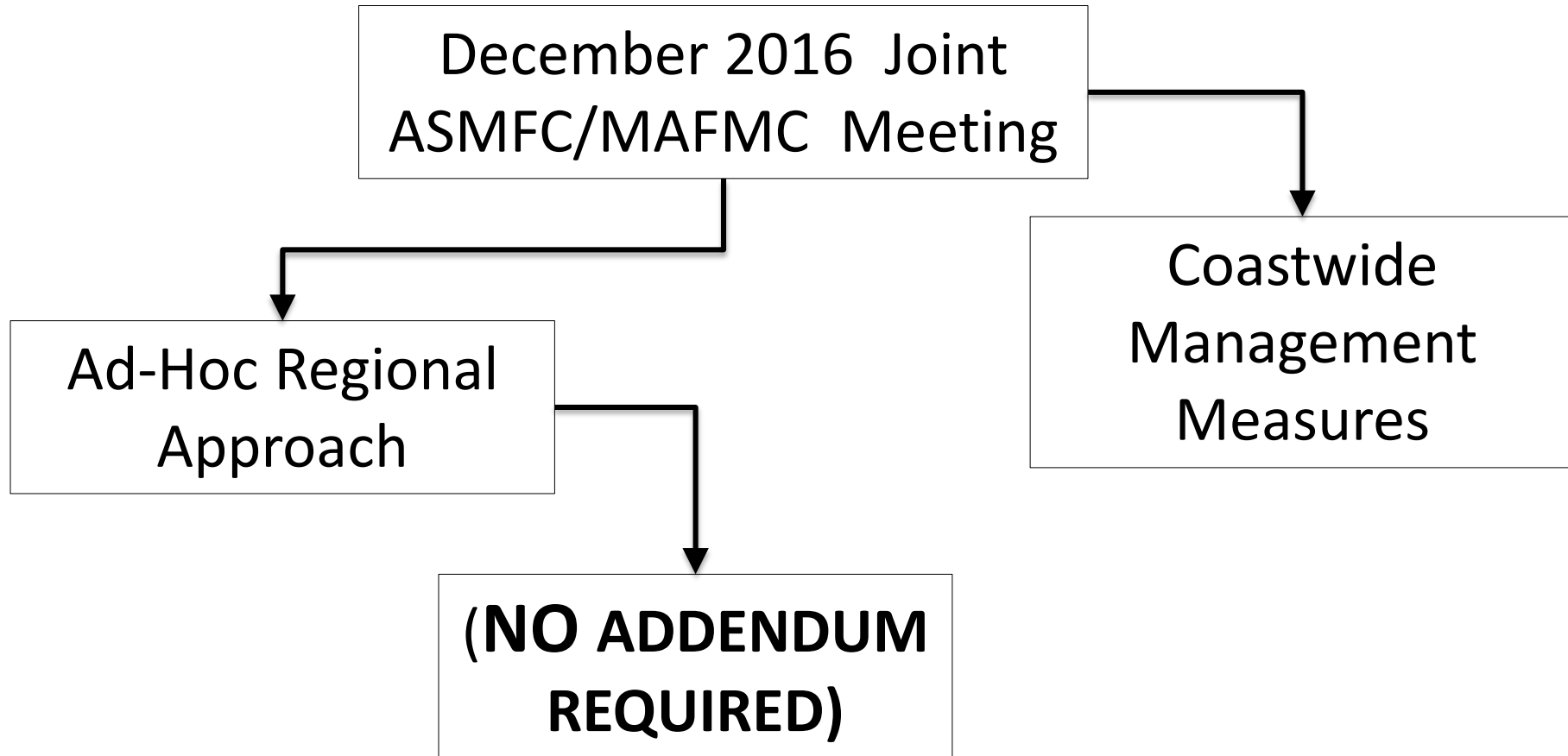
or

- Addendum XXVII (2016)
 - Ad-Hoc regional management can be extended to 2017

2017 Black Sea Bass Management



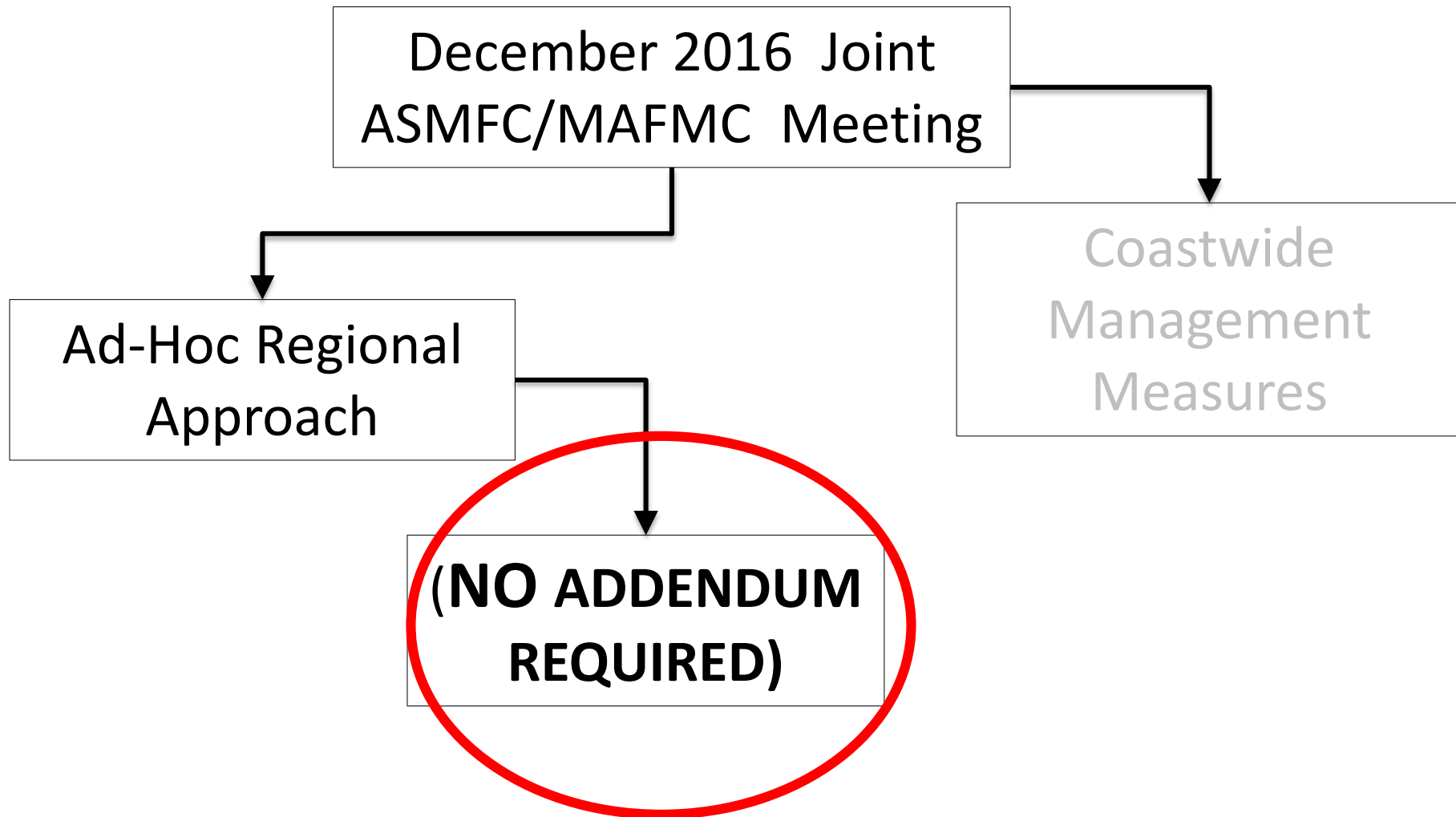
Annual Decision Tree



2017 Black Sea Bass Management



Annual Decision Tree



Timetable moving forward:



Black Sea Bass

- December 2016
 - Board and Council set Federal Management Measures
 - Board continues ad-hoc regional approach under Addendum XXVII (MOTION NEEDED TO CONTINUE AD-HOC APPROACH in 2017)
- January 2017
 - 2016 measures in place for 2017 (initially)
 - SSC Meets on January 25th
 - TC Members from MA-NJ develop proposals to achieve 2017 RHL (from ABC established by SSC)
 - DUE to ASMFC STAFF: **COB Monday February 6th**
- February 2017
 - Present Proposals for updated 2017 measures to Board & Council at Joint Meeting
 - Board considers methodology used and approval of proposals

Timetable moving forward:



Black Sea Bass cont'd

- February-April 2017
 - States implement measures through state process
 - Submit final measures to ASMFC staff by **May 1, 2017**
- If state or region does not implement either Addendum XXVIII provisions, states can be found out of compliance by the Commission