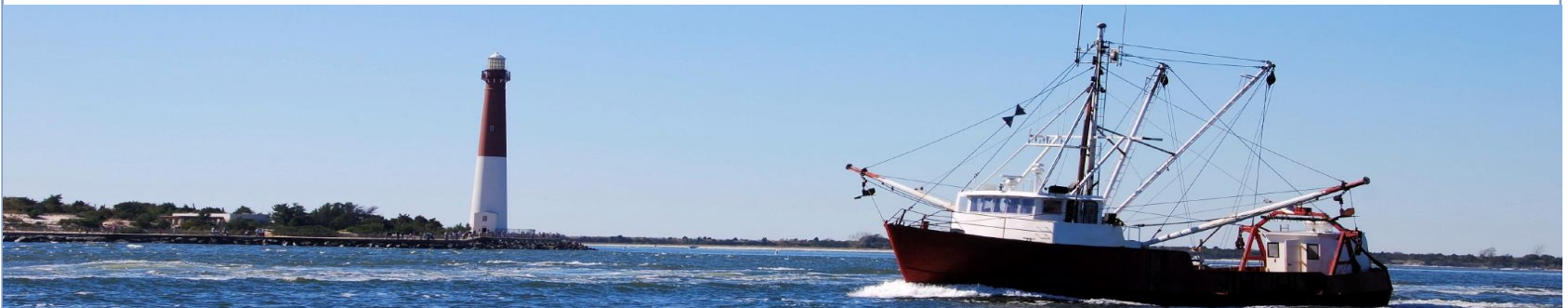


MARCO

MID-ATLANTIC OCEAN DATA PORTAL

Mid-Atlantic Ocean Data Portal Update: Mapping Communities at Sea



Mid Atlantic Fisheries Management Council
Newark, Delaware
June 14, 2016
Jay Odell



MARCO

MID-ATLANTIC OCEAN DATA PORTAL

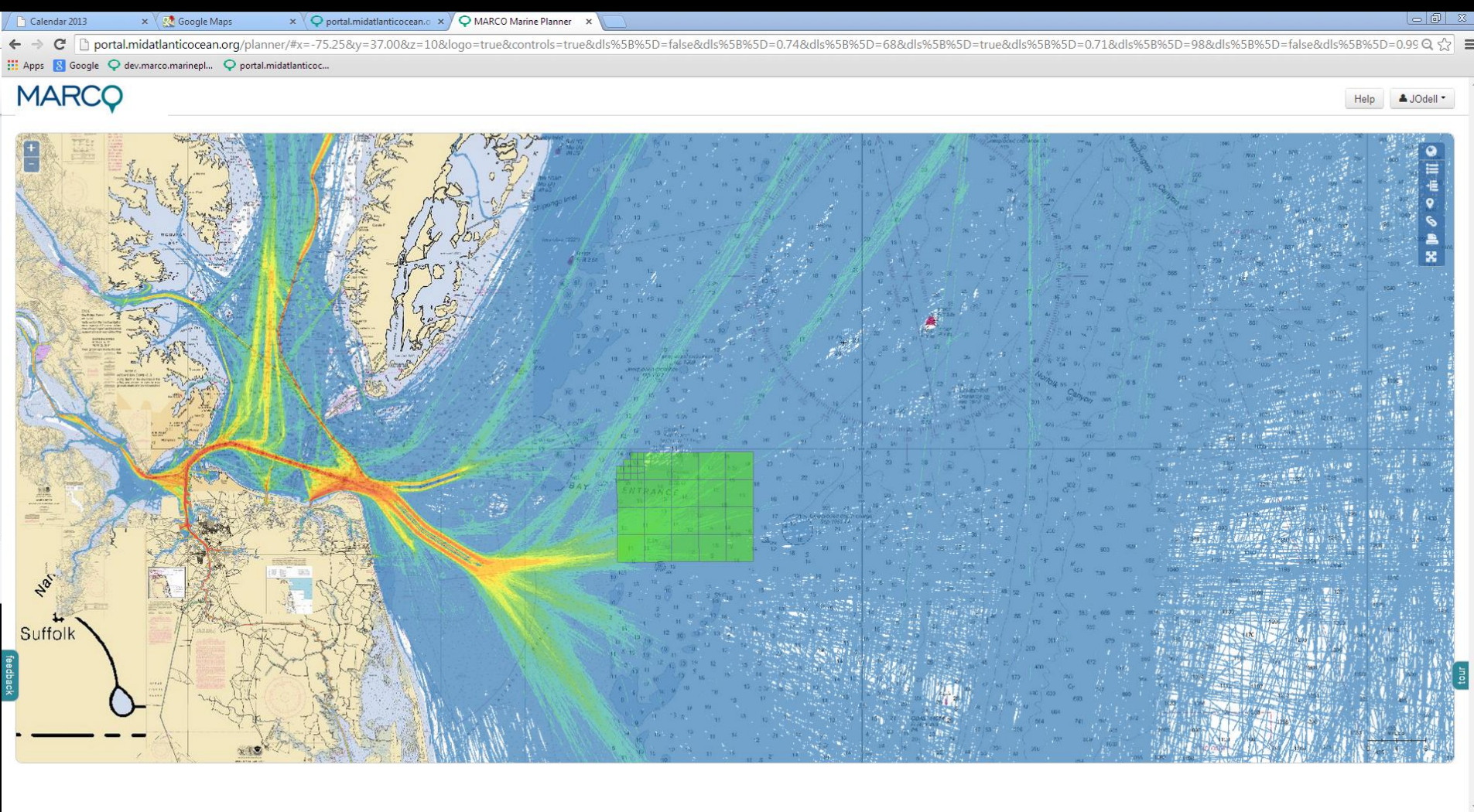
RESOURCES FOR
REGIONAL OCEAN PLANNING



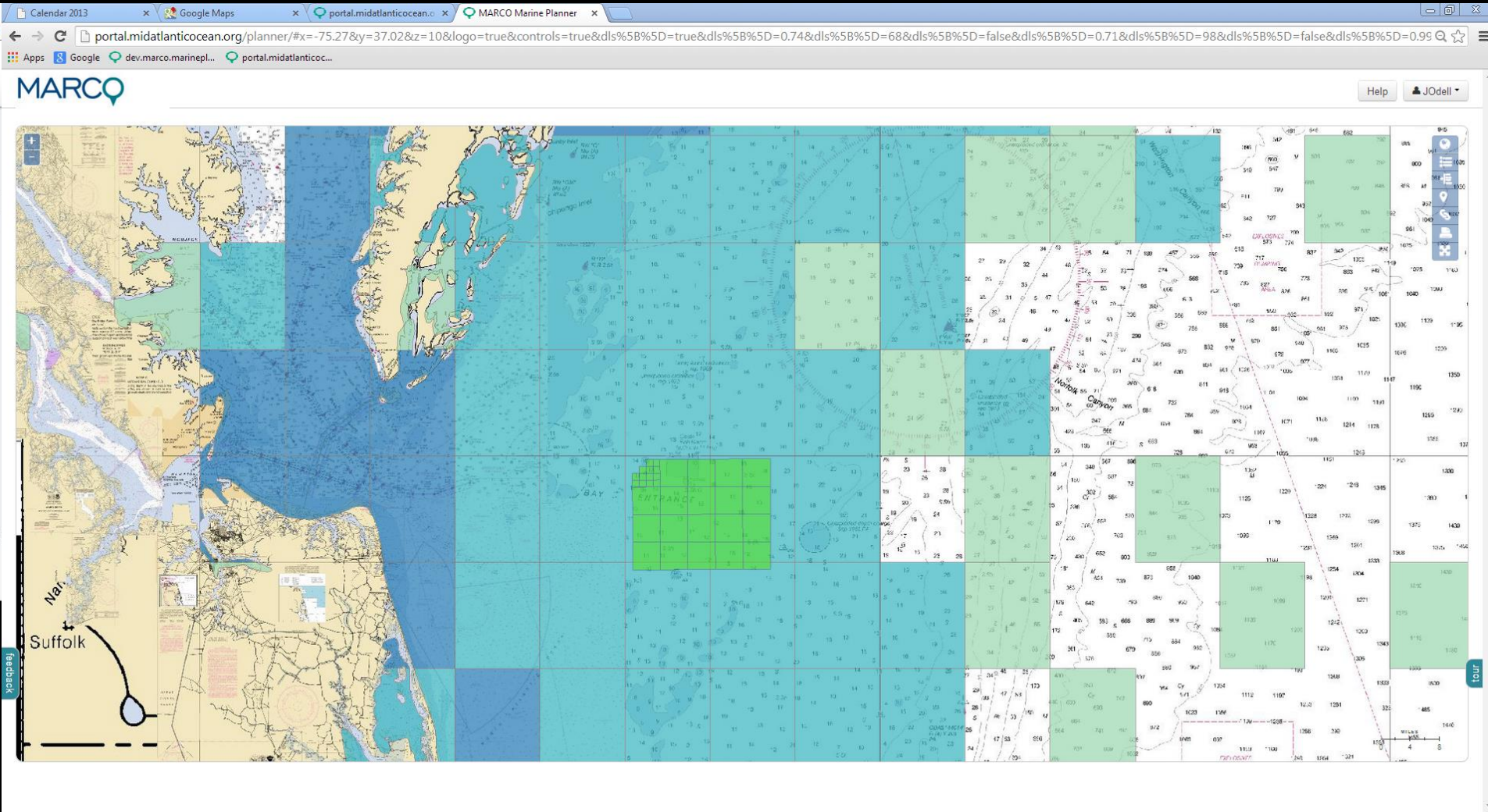
Tour the portal at portal.midatlanticocean.org



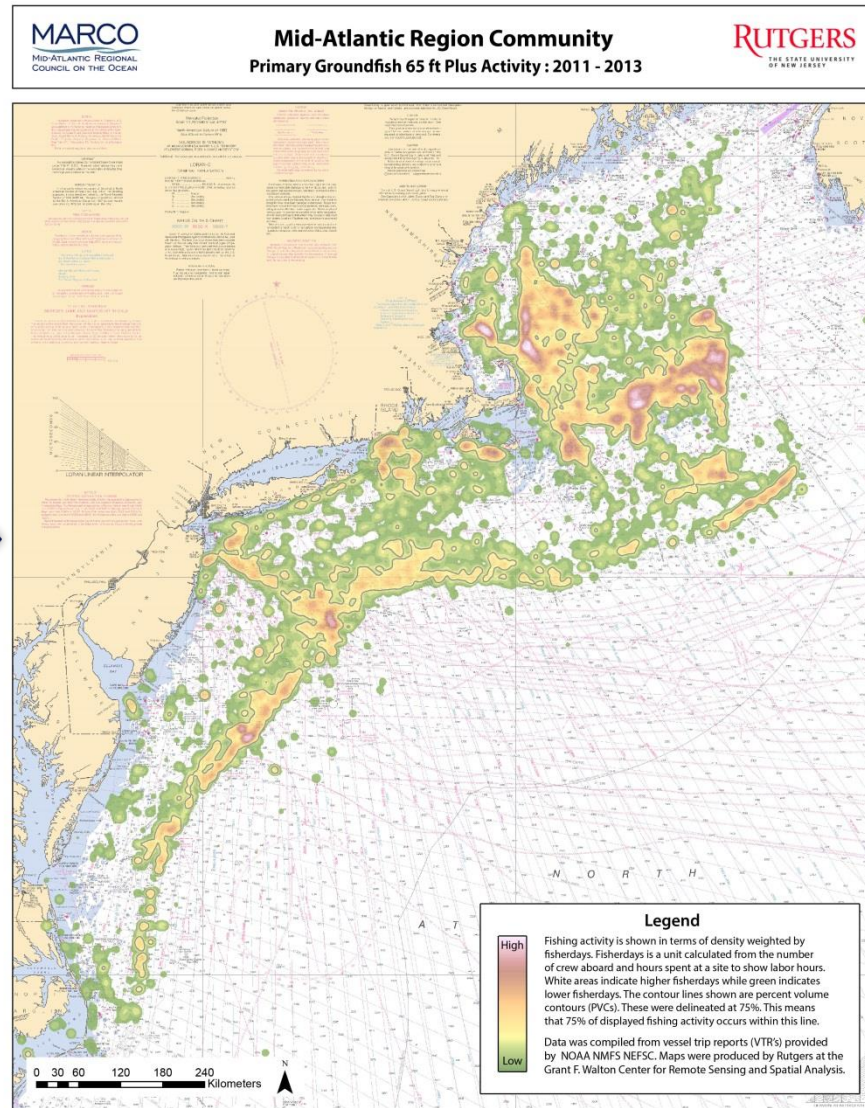
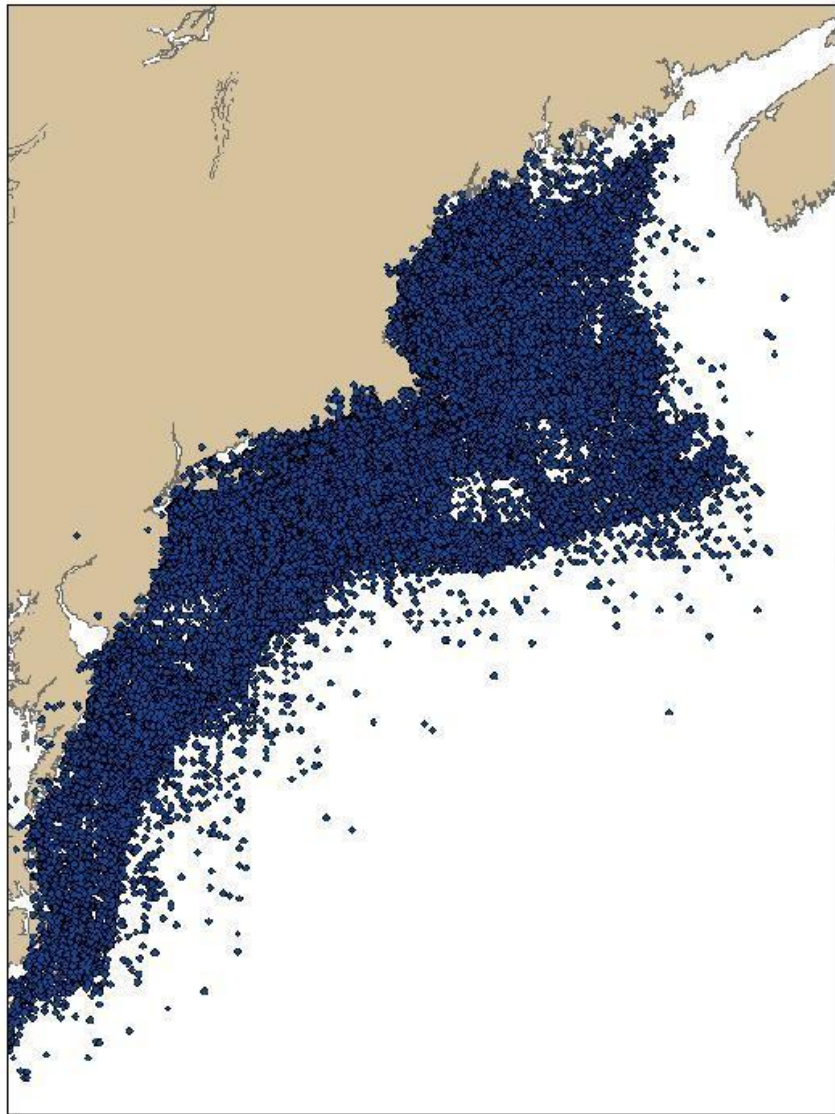
High resolution data for vessel traffic and other human uses now available



Available data for commercial fishing was very coarse

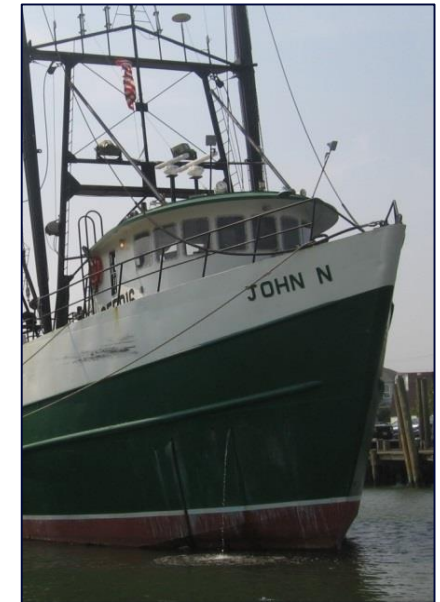


VTR Data Challenge



Communities at Sea Mapping Approach

- Initial data handling & aggregation conducted by NOAA staff.
- VTR data linked with Permit database to record trip dates, number of crew on board, trip locations, port of landing, etc.
- Trip length multiplied by crew on board to estimate “fisherman days,” a measure of labor time or community presence.
- Communities defined based on gear, vessel type and home port combinations.
- Draft maps reviewed and improved by fishing community participants before publication.



Mapping methodology by Kevin St. Martin / Rutgers

Feedback from fishermen regarding these maps:

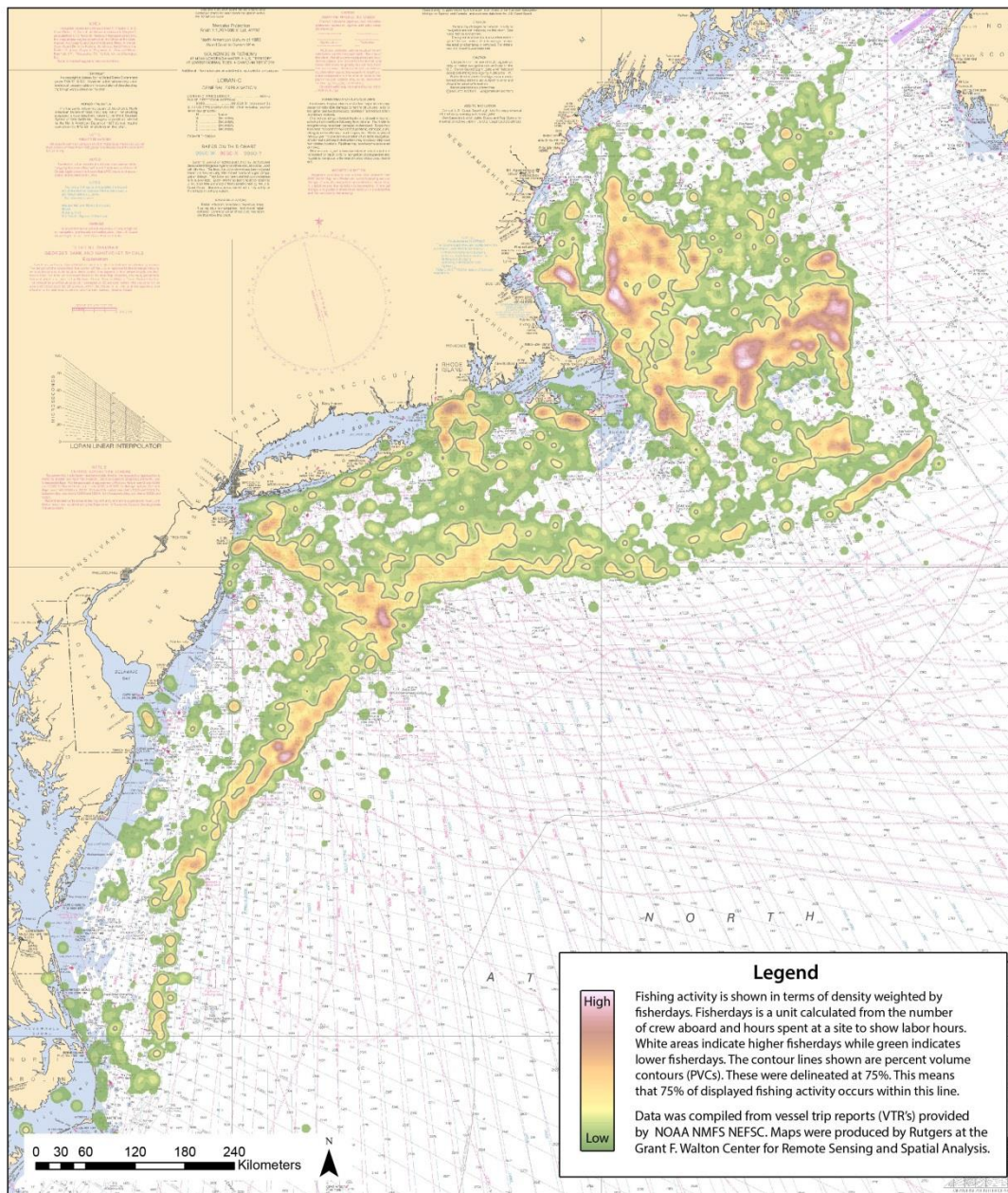
- Maps that only show fishing during recent years don't show all the areas that may be important.
- Maps showing fishing with fixed gear are more accurate than mobile gear maps.
- Single-day trips are more accurately represented than multi-day trips.
- VTR maps only show a percentage of state licensed fishing effort (vessels that hold federal permits).

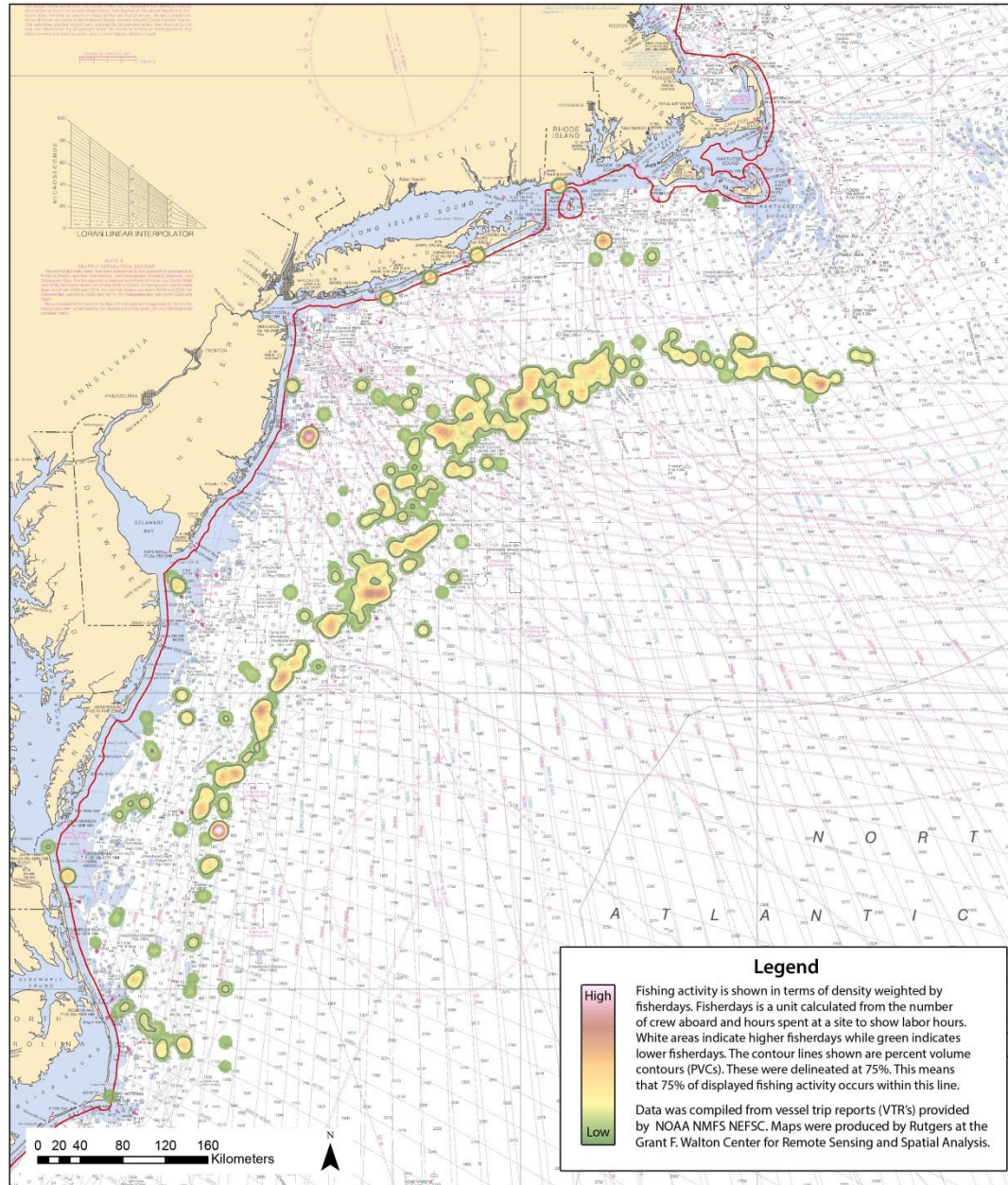
Feedback from fishermen regarding these maps:

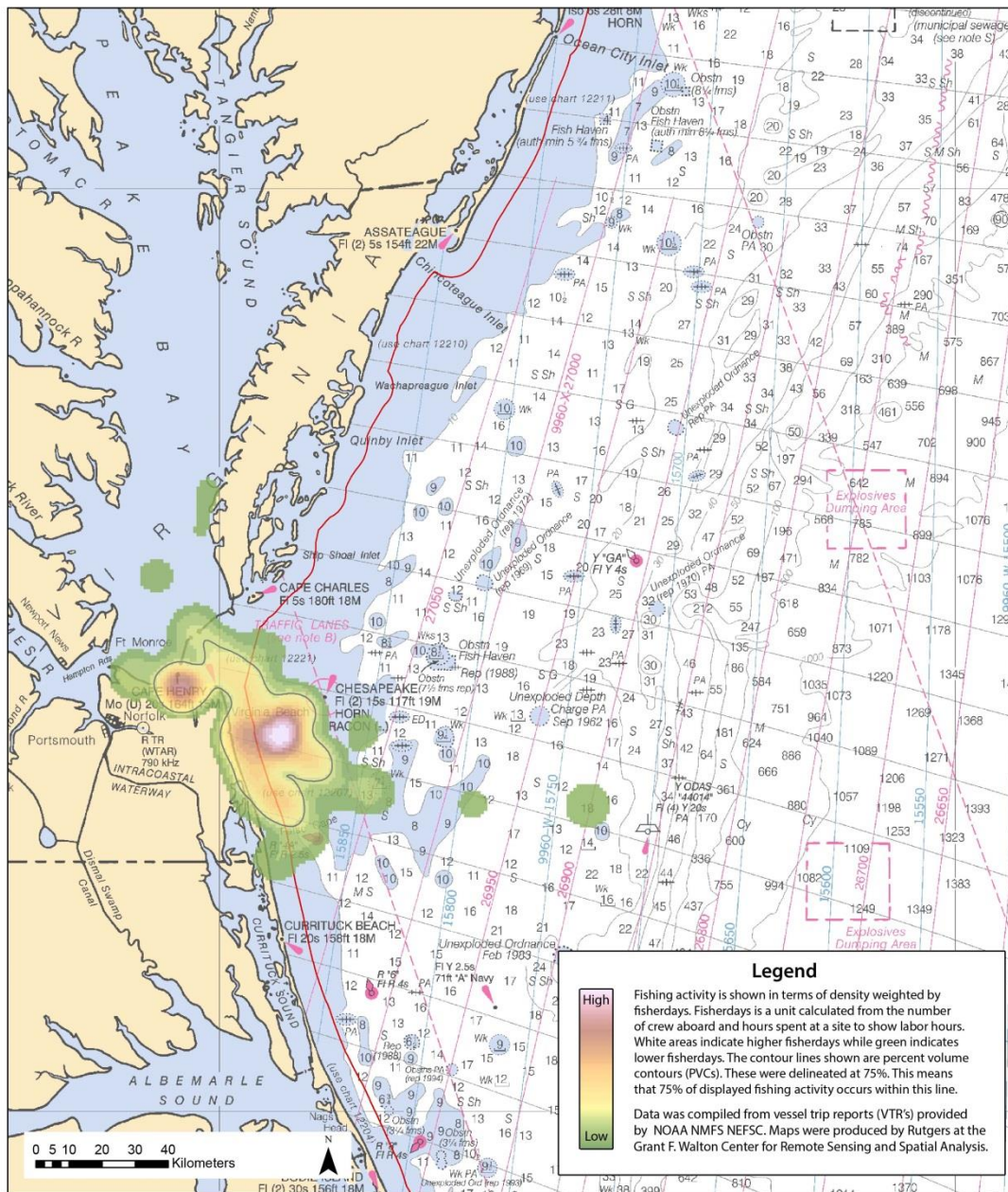
- VMS data is more precise and should be considered along with VTR when possible.
- Communities at Sea maps should be used to focus consultation with fishing communities early in decision making processes.
- In some cases, neither VTR nor VMS will be fine scale enough and decision makers should work directly with fishermen to identify management solutions.

Mid-Atlantic Ocean Data Portal:

<http://portal.midatlanticocean.org/>















Switch to live demo of Portal