



# Dec 2015: Blueline Tilefish

Jason Didden  
[jdidden@mafmc.org](mailto:jdidden@mafmc.org)

# Overview

- Proposed Plan
- Alternatives

# Proposed Plan

- January workshop to establish catch amounts
- Add data into hearing document
- Public hearings
- March SSC Meeting
- Decision (April)
- Submit soon after

# Alternatives

- Build off of previous list and input from Council in October.
- FMAT input incorporated into document.
- Staff looking for confirmation, modifications, additions, deletions...

# Alternative 1

- No action
- Emergency measures expire June 3. No federal management north of NC/VA border. VA, MD, DE, NJ have or will have measures in place that are comparable or stricter to emergency rules.

# Alternative 2

- Management Unit
- 2a - NC/VA Line (Preferred? (PRE))
- 2b - Cape Hatteras
- 2c - Objectives

# Alternative 3

- Status Determination Criteria
- Use most recent accepted assessment

# Alternative 4

- Commercial Permitting/Reporting
- 4a – Use golden tilefish permits (PRE)
- 4b – New blueline permits
- 4c – Standard reporting (PRE)
- 4d – eVTRs
- 4e – Dealer permits & reporting (PRE)



# Alternative 5

- For-Hire Permitting/Reporting
- 5a – Use golden tilefish permits (PRE)
- 5b – New blueline permits
- 5c – Standard reporting
- 5d – eVTRs

# Alternative 6

- Private Permitting/Reporting
  - 6a – Private Permit
  - 6b – Require HMS permit
  - 6c – Private reporting (HMS)
  - 6d – Private reporting (online pre-landing)
  - 6e – No private recreational permit

# Alternative 7

- Monitoring Committee
- Use golden tilefish monitoring committee

# Alternative 8

- Frameworks
- Allow previously-considered actions to be frameworked

# Alternative 9

- Specifications
- 9a – Specifications mechanisms
- 9b – ABC Control Rule
- 9c – Risk Policy

# Alternative 10

- Allocations (landings)
- 10a – No allocations
- 10b1 – 5-year median (2009-2013)
- 10b2 – 5-year mean (2009-2013)
- 10c1 – 10-year median (2004-2013)
- 10c2 – 10-year mean (2004-2013)
- 10d – Specifications w/ allocations
- 10e - Specifications w/o allocations

# Alternative 11

- Commercial Trip Limits (gutted)
- 11a – Current – 275 pounds
- 11b – 200 pounds
- 11c – 300 pounds
- 11d – 500 pounds
- 11e – 900 pounds

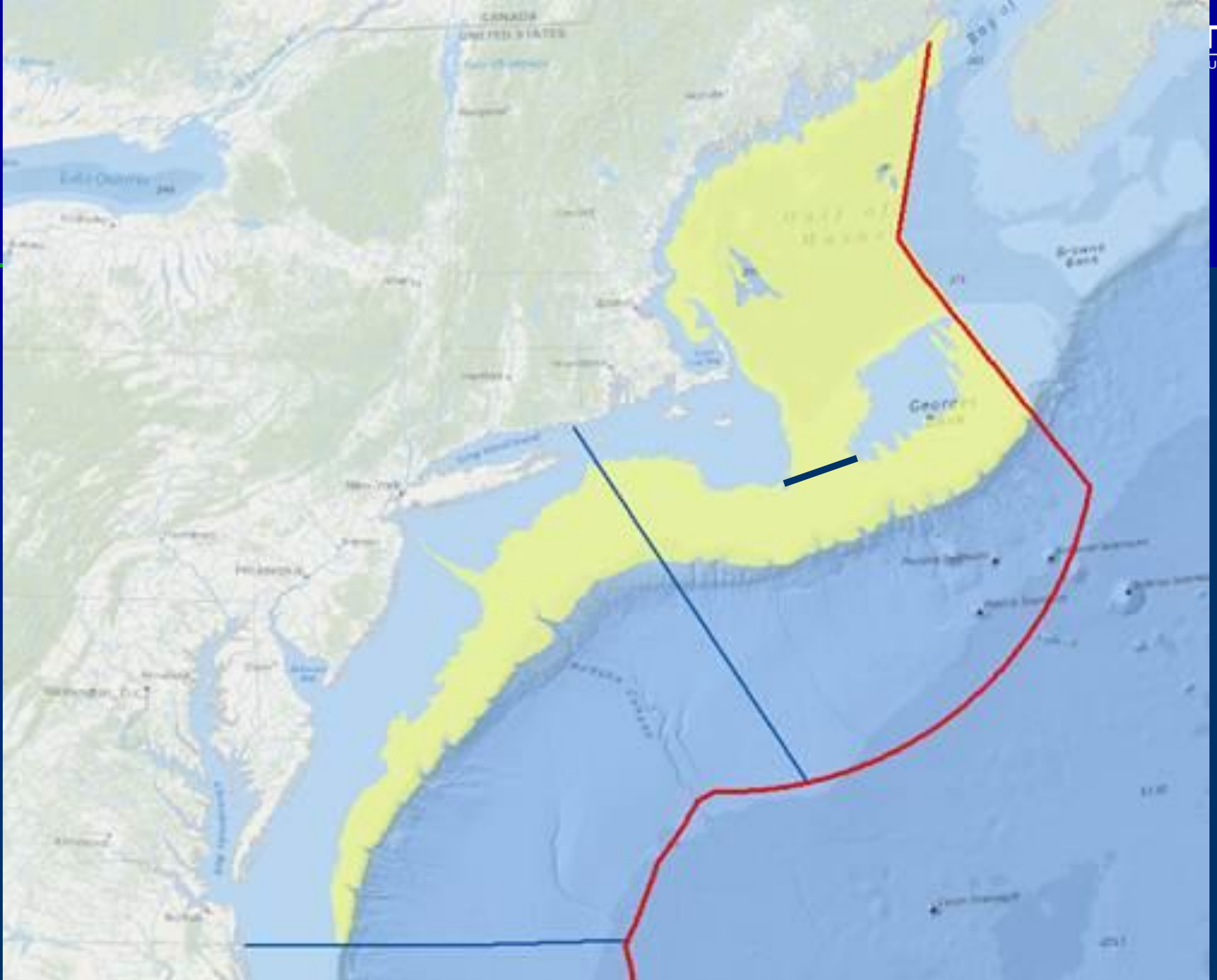
# Alternative 12

- Recreational Limits
- 12a – Current – 7 fish
- 12b – 5 fish
- 12c – 9 fish
- 12d – 3 extra fish for longer trips



# Alternative 13

- EFH
- 13a – Wait
- 13b – EFH designation via life history information (46-256 meters)



# Alternative 14

- Accountability Measures
- 14a – AMs with allocations
  - Management measures, deductions
- 14b – AMs w/o allocations
  - Management measures, deductions
- 14c – In-season closure authority.
  - Sub option: no recreational closure
  - Sub option: 80% recreational closure threshold

**END**

# Nov 20 FMAT to Review Alts

- Suggestions to clarify alternatives – directly incorporated into document
  - Clarify no action (no Federal management north of NC)
  - Add fishing year
  - Gutted/whole issue
  - Add dealer requirements
  - Add eVTR for commercial permits (consistency with for-hire)

# Nov 20 FMAT to Review Alts

- Suggestions to clarify alternatives – directly incorporated into document
  - Clarify recreational permitting/reporting
  - EFH (does it need to be designated?) Yes.
  - Coastwide management unit to considered but rejected
  - Cape Hatteras Split