

Golden Tilefish



Framework 2 – First Meeting

December 7, 2015

Today's Objectives



- Review range of alternatives presented in the Framework 2 draft document
- Select preferred alternatives



Framework 2 – What's in it?

- Minor modifications to the management system – mostly administrative
- Gear restrictions in the recreational fishery
- Qualifiers (landings ratios) for the incidental permit category

Issues and Alternatives



- 1) Tilefish Catch and Landings Limits Flow Chart
- Modify the GTF flow chart to deduct discards from the specific component of the commercial sector (IFQ fishery and/or incidental fishery) generating them

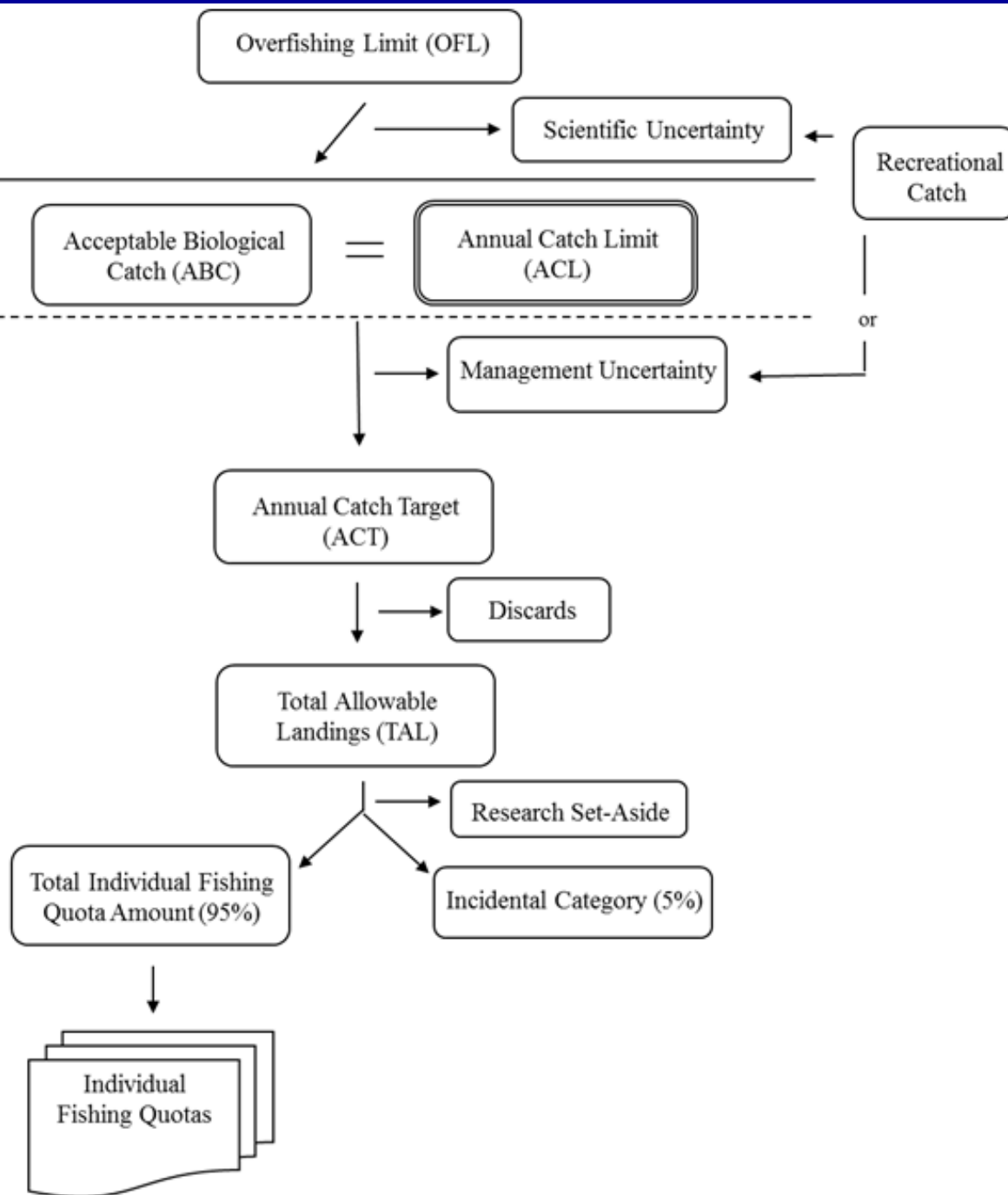


Fig. 1,
p. 13

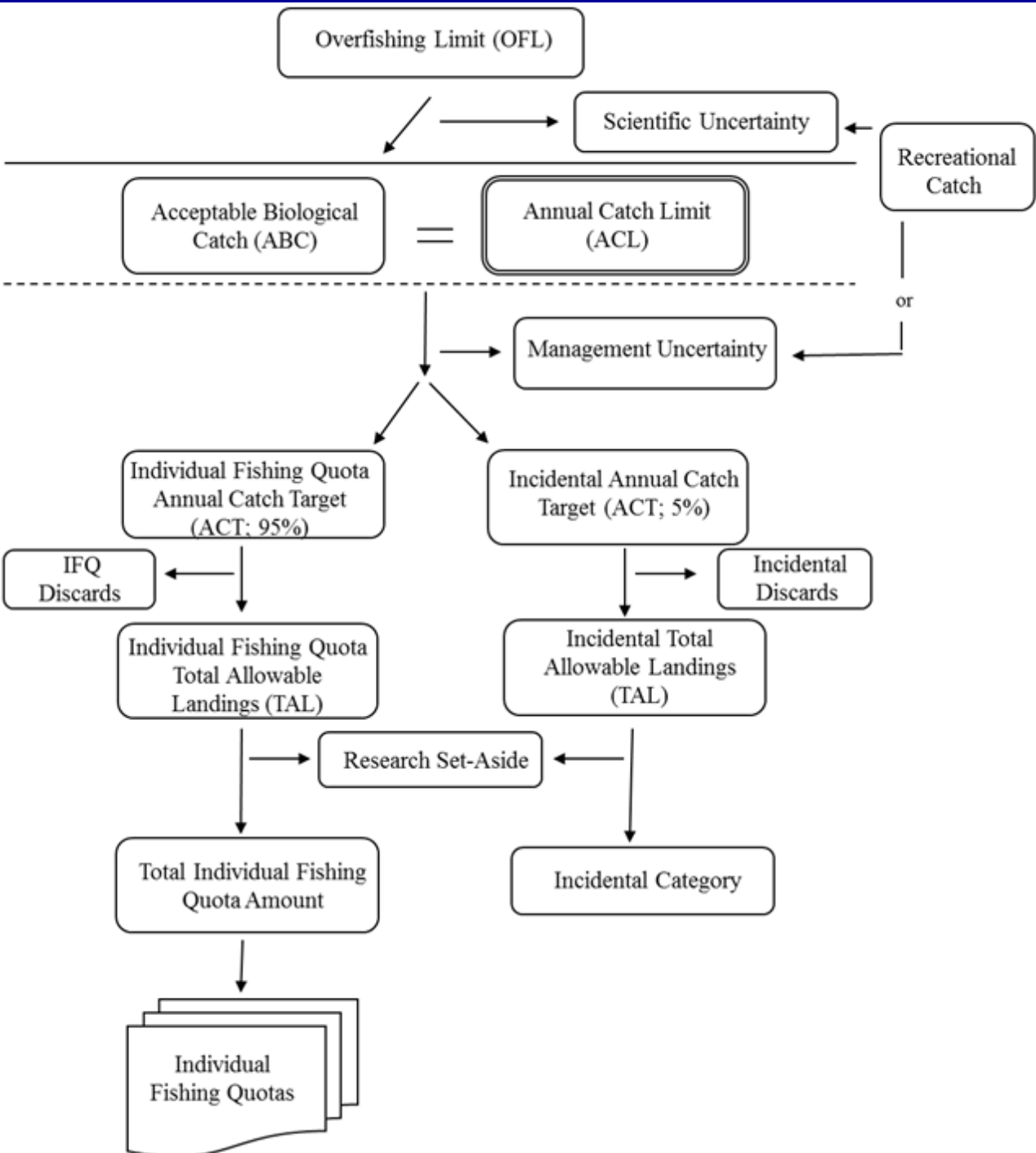


Fig. 2,
p. 14

Issues and Alternatives



- 1) Tilefish Catch and Landings Limits Flow Chart
 - Alternative 1 (No action/*Status Quo*)
 - Alternative 2 (Modification to the golden tilefish catch and landings limits flow chart)



Issues and Alternatives

- 2) Interactive Voice Response (IVR) Reporting Requirements
 - “A vessel fishing under a Tilefish IFQ Allocation Permit must submit a tilefish catch report by using the interactive voice response (IVR) phone line system within 48 hours after returning to port and offloading.”



Issues and Alternatives

- 2) Interactive Voice Response (IVR) Reporting Requirements
 - Alternative 1 (No Action/*Status Quo*)
 - Alternative 2 (Eliminate the IVR reporting requirements)

Issues and Alternatives



- 3) Number of Allowable Fishing Allocations
 - In the golden tilefish fishery, IFQ holders designate vessels they own or lease that are authorized to land their IFQ
 - Under the current monitoring system, a vessel is authorized to land for a specific time period not for a specific number of pounds. During the period a vessel is authorized to harvest, all of its golden tilefish landings are counted against the allocation

Issues and Alternatives



- 3) Number of Allowable Fishing Allocations
 - ❖ The system is not designed to allow a trip to be split between multiple IFQ allocation numbers



Issues and Alternatives

- 3) Number of Allowable Fishing Allocations for More Than one Allocation at a Time)
 - Alternative 1 (No Action/*Status Quo*)
 - Alternative 2 (Prohibit Vessels From Fishing for More Than one Allocation at a Time)



Issues and Alternatives

- 4) Golden Tilefish Product Form Landings Requirements
 - In Spring 2014, the “head-off” category from the dealer reporting software was removed to avoid dealers mistakenly reporting head-on fish as head-off



Issues and Alternatives

- 4) Golden Tilefish Product Form Landings Requirements
 - Alternative 1 (No Action/*Status Quo*)
 - Alternative 2 (Prohibit Vessels from Landing Golden Tilefish with the “Head-Off”)

Issues and Alternatives



- 5) Recreational Gear Requirements
 - Industry members have reported that anglers are fishing for golden tilefish using mini longlines with up to 25 hooks on the line. The Council discussed that this type of gear should not be used for recreational fishing purposes

Issues and Alternatives



- 5) Recreational Gear Requirements
 - Alternative 1 (No Action/*Status Quo*)
 - Alternative 2 (Prohibit the Use of Mini-Longlines)

Issues and Alternatives



- 5) Recreational Gear Requirements
 - Federal Register / Vol. 64, No. 231 / Thursday, December 2, 1999 / Rules and Regulations



Issues and Alternatives

■ 5) Recreational Gear Requirements

- SUMMARY: NMFS revises the list of authorized fisheries and fishing gear used in those fisheries (LOF) contained in 50 CFR 600.725(v). Effective December 1, 1999, **no person or vessel may employ fishing gear or participate in a fishery in the exclusive economic zone (EEZ) not included in this LOF** without giving 90 days' advance notice to the appropriate Fishery Management Council (Council) or, with respect to Atlantic highly migratory species (HMS), the Secretary of Commerce (Secretary)



Issues and Alternatives

■ 5) Recreational Gear Requirements

Federal Register / Vol. 64, No. 231 / Thursday, December 2, 1999 / Rules and Regulations **67519**

Fishery	Authorized gear types
13. Tilefish Fishery (Non-FMP): A. Groundfish hook-and-line fishery B. Trawl fishery C. Recreational fishery	A. Longline, handline, rod and fishery reel. B. Trawl. C. Rod and reel, spear.

Issues and Alternatives



- 6) Explore developing landings ratios for the incidental permit category
 - Industry members have indicated that incidental permit holders are targeting golden tilefish and this does not qualify as incidental landings



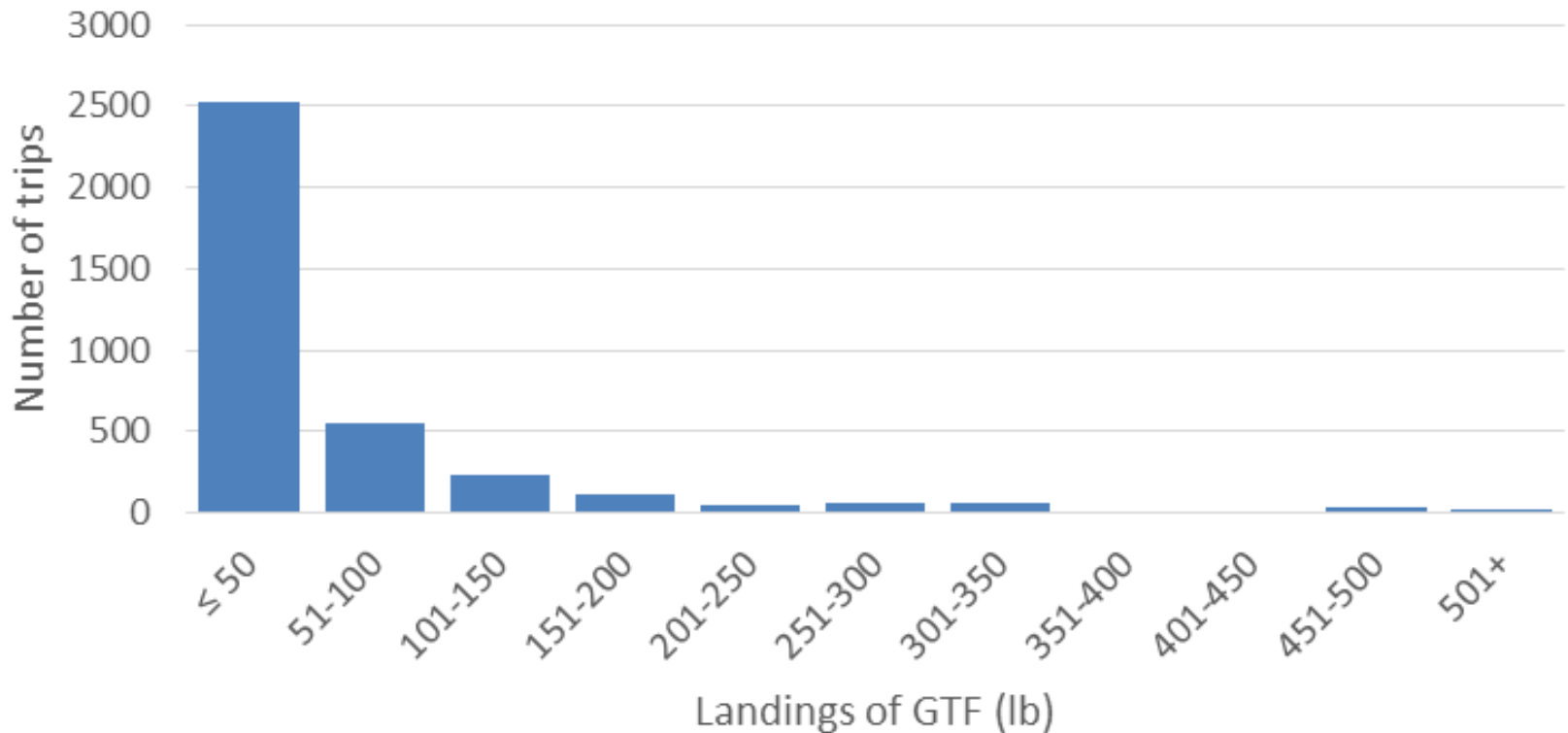
Issues and Alternatives

- 6) Explore developing landings ratios for the incidental permit category
 - Alternative 1 (No Action/*Status Quo*)
 - Alternative 2 would require that incidental permit holders do not possess golden tilefish at the time of landings in excess of 25% of the total of all combined species landed
 - Alternative 3 – same as above but use 50%

Incidental Landings



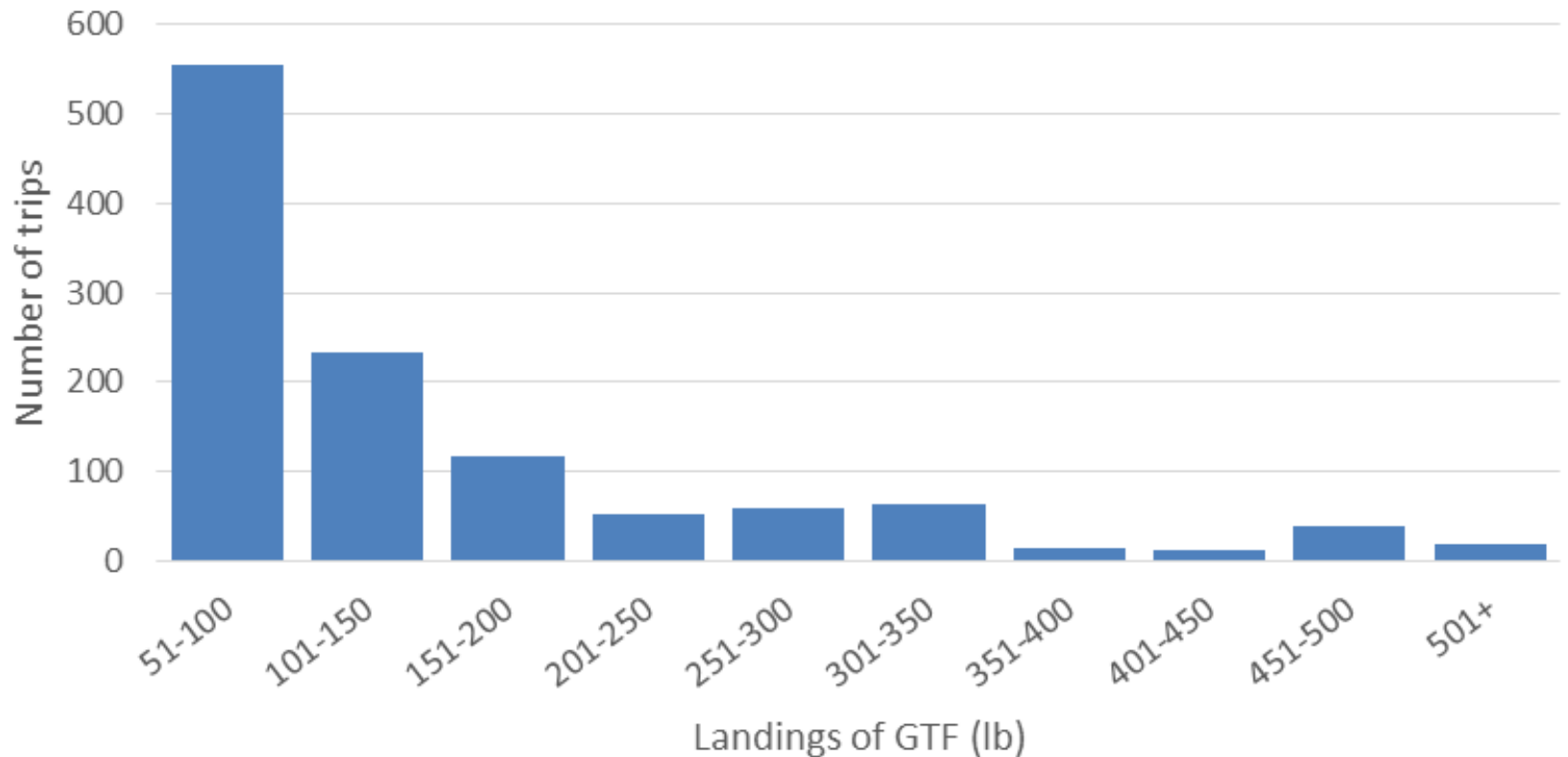
Frequency distribution of incidental GTF trips by landings, FYs 2010-2014



Incidental Landings



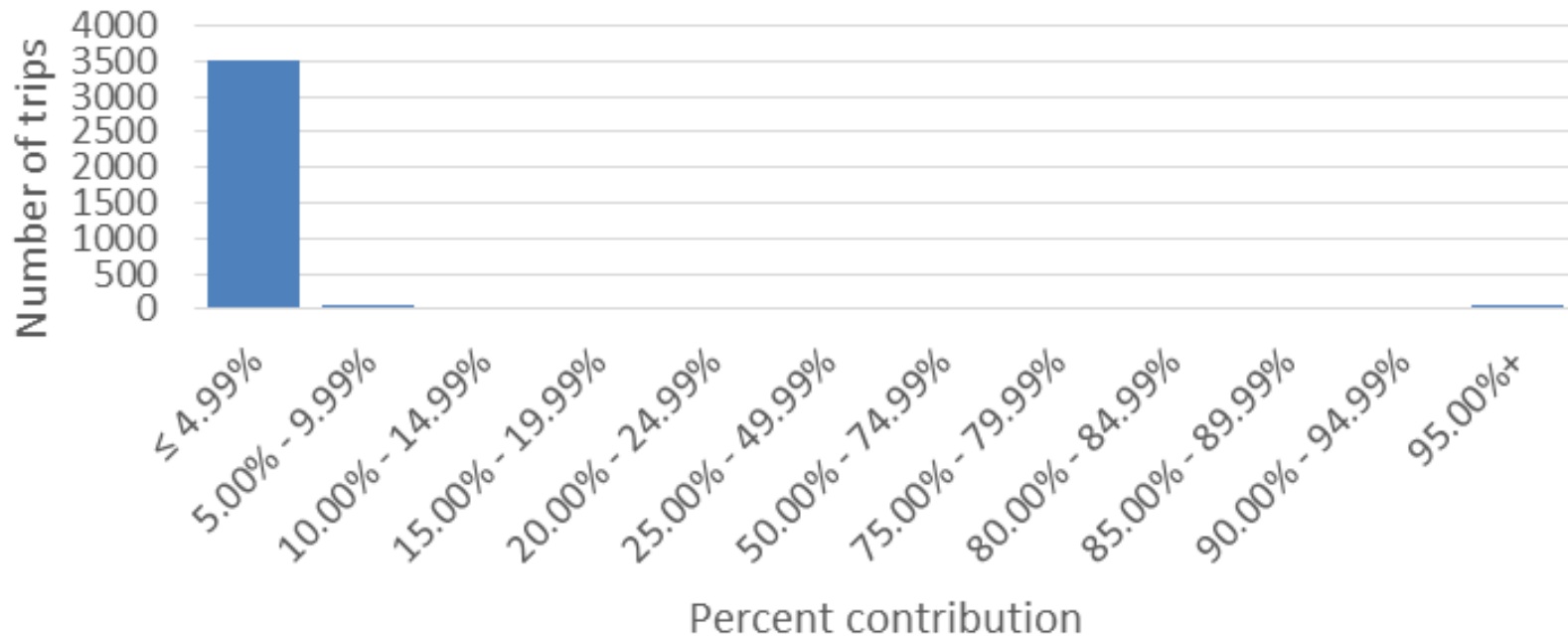
Frequency distribution of incidental GTF trips by landings, excludes ≤ 50 lb, FYs 2010-2014



Incidental Landings



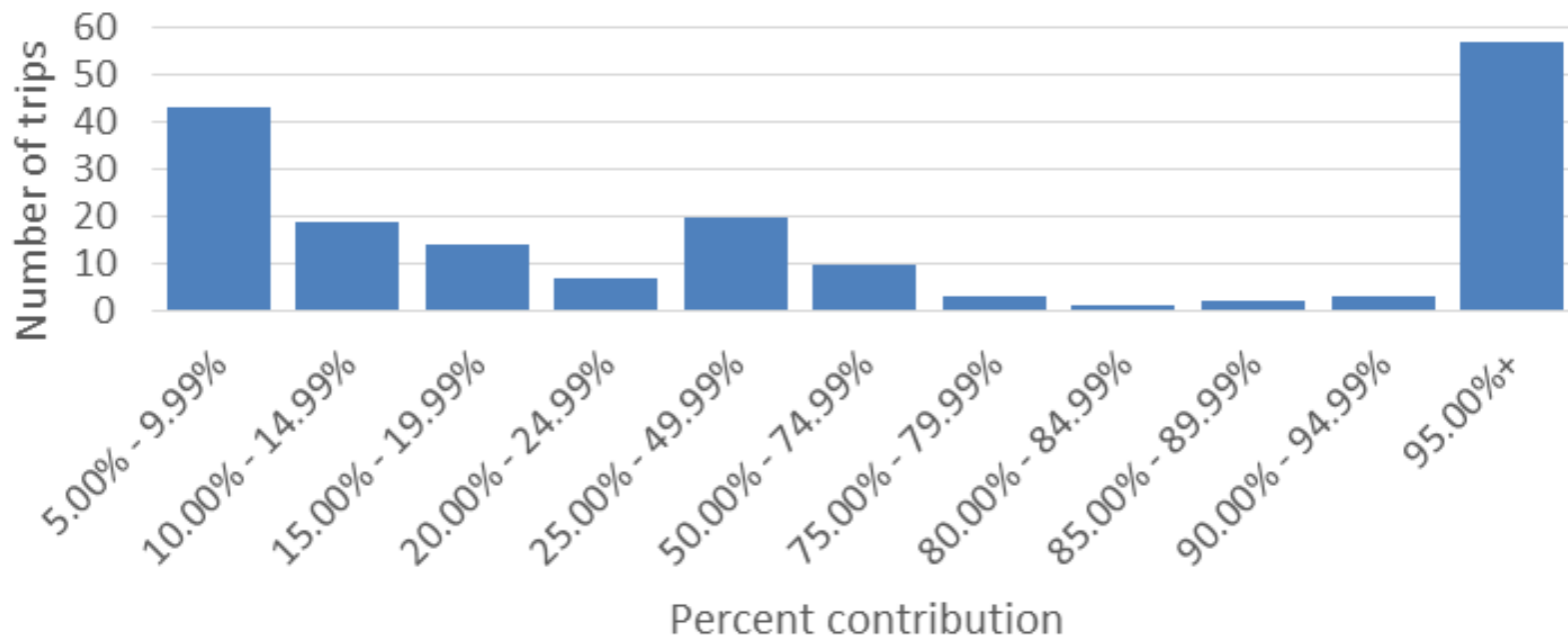
Frequency distribution of incidental GTF trips by
GTF contribution (%) to total landings,
FYs 2010-2014



Incidental Landings



Frequency distribution of incidental GTF trips by GTF contribution (%) to total landings, excludes $\leq 4.99\%$ contribution, FYs 2010 - 2014



Framework Activity



Dec.
2015

- First Framework meeting, review range of alternatives and select preferred alternatives

Jan.
2016

- Complete EA

Feb.
2016

- Second Framework meeting
- Document near-final form

March-
May
2016

- March/April – Finalize document
- April/May - Submit document to the Service

Questions?





The total number of incidental vessels, trips, and associated pounds for a given threshold, FYs 2010-2014

Threshold	GTF lb	% GTF lb	Other lb	Total lb	GTF as a		# vessels	% vessels	# trips	% trips
					% of total					
≥ 1 lb	221,964	100%	64,072,807	64,294,771	0.35%		252	100%	3,696	100%
≥ 100 lb	140,848	63%	10,615,441	10,756,289	1.31%		117	46%	618	17%
≥ 200 lb	90,881	41%	3,634,537	3,725,418	2.44%		67	27%	260	7%
≥ 300 lb	67,004	30%	1,989,061	2,056,065	3.26%		48	19%	163	4%
≥ 350 lb	42,412	19%	823,372	865,784	4.90%		24	10%	86	2%
≥ 400 lb	36,783	17%	616,219	653,002	5.63%		18	7%	71	2%
≥ 450 lb	31,252	14%	414,227	445,479	7.02%		13	5%	58	2%
≥ 500 lb	15,751	7%	346,080	361,831	4.35%		11	4%	26	1%

Incidental Landings



<u>Fishing Year</u>	<u>Tilefish lb</u>	<u># vessels</u>	<u># trips</u>	<u>Average lb/trip</u>
2010	416	3	3	139
2011	160	1	1	160
2012	6117	5	13	471
2013	3133	5	11	285
2014	9580	2	22	435

- Vessels that landed GTF only